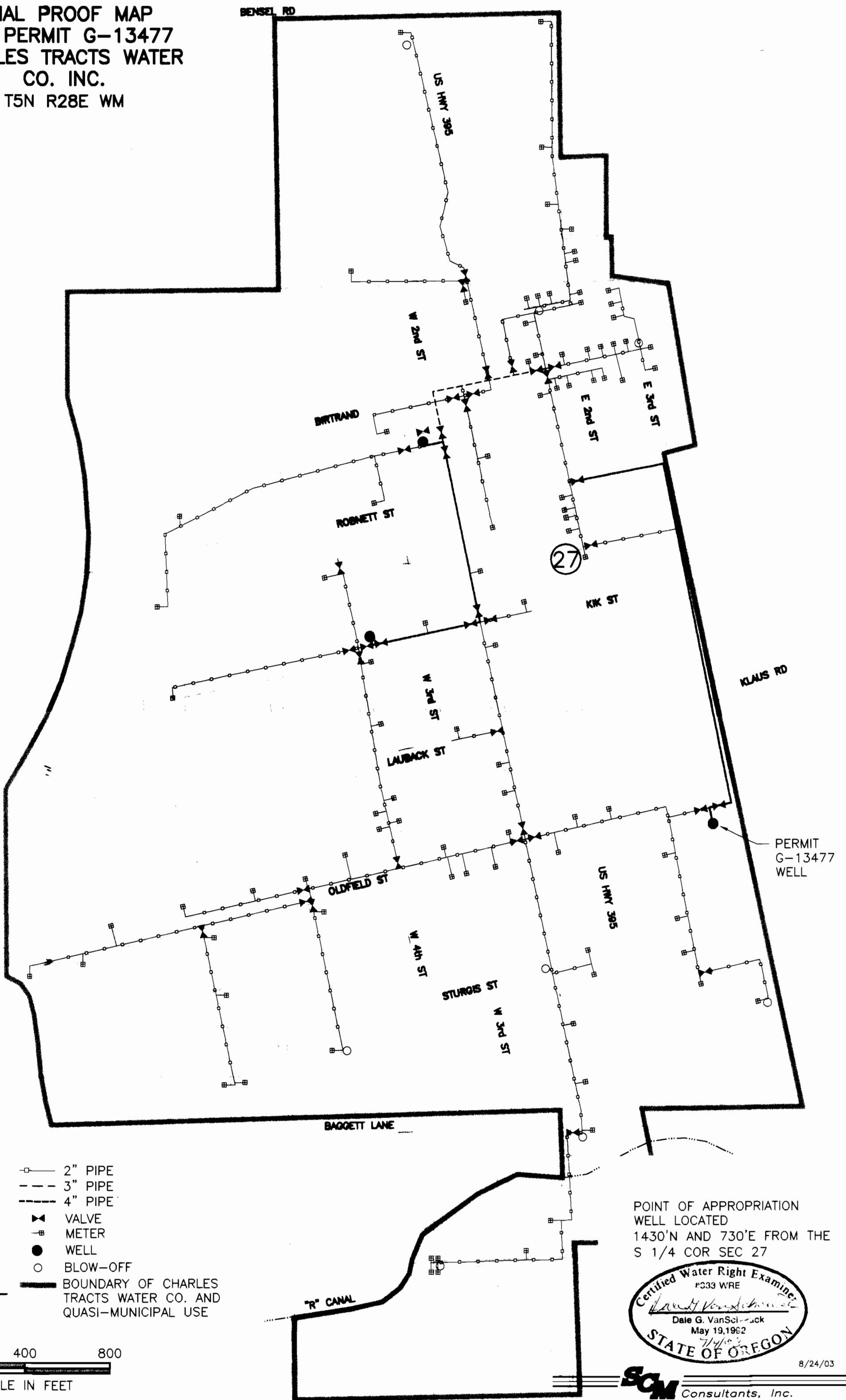


**FINAL PROOF MAP
FOR PERMIT G-13477
CHARLES TRACTS WATER
CO. INC.
T5N R28E WM**



- 2" PIPE
- - - 3" PIPE
- - - 4" PIPE

- ⊗ VALVE
- ⊠ METER
- WELL
- BLOW-OFF

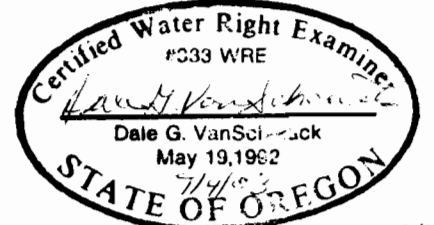
— BOUNDARY OF CHARLES TRACTS WATER CO. AND QUASI-MUNICIPAL USE



0 400 800
SCALE IN FEET

NOTE:
THE PURPOSE OF THIS MAP IS TO IDENTIFY THE APPROXIMATE LOCATION OF THE WATER RIGHT. IT IS NOT INTENDED TO PROVIDE INFORMATION RELATIVE TO THE LOCATION OF PROPERTY OWNERSHIP BOUNDARY LINES.

POINT OF APPROPRIATION WELL LOCATED
1430'N AND 730'E FROM THE
S 1/4 COR SEC 27



8/24/03
SCM Consultants, Inc.
A Tetra Tech Company
DRAWING: H:\CAD\AG\3522\165\3522165FP.dwg
PRINTED BY: rogerw on 09/04/03 06:24 AM