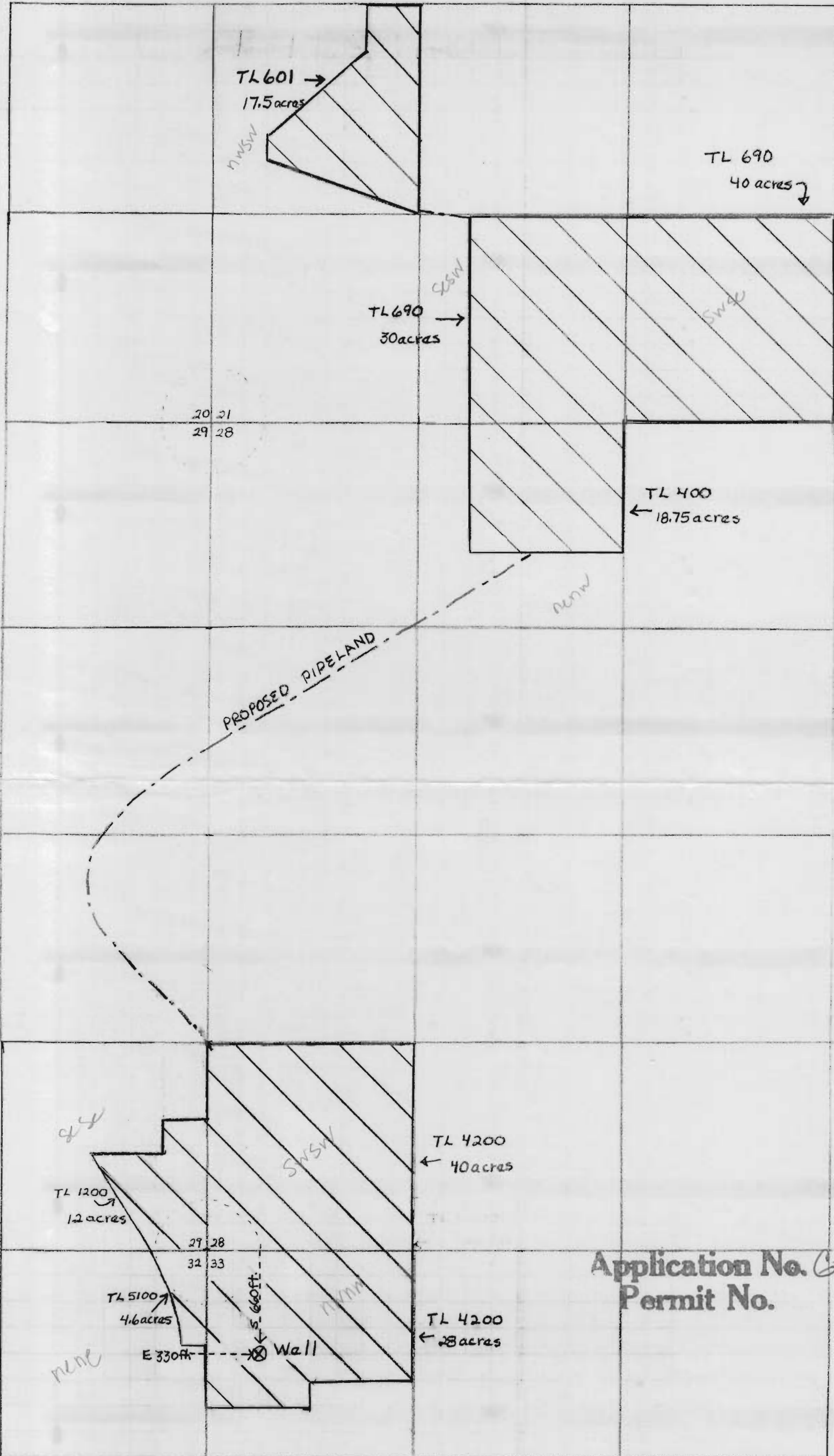


TIN R 13 E W M

RECEIVED

SEP - 5 1997

WATER RESOURCES DEPT
SALEM, OREGON



SCALE 8"=1 MILE

Application No. 6-14607
Permit No.

G13512

MEL OMEG APPLICATION MAP

RECEIVED

SEP 15 1997

WATER RESOURCES DEPT.
SALEM, OREGON