

Purpose of Map: Water rights for 5 acres

RECEIVED

Application No. G14683

FEB 17 1998

R2W WM

Permit No. G13576

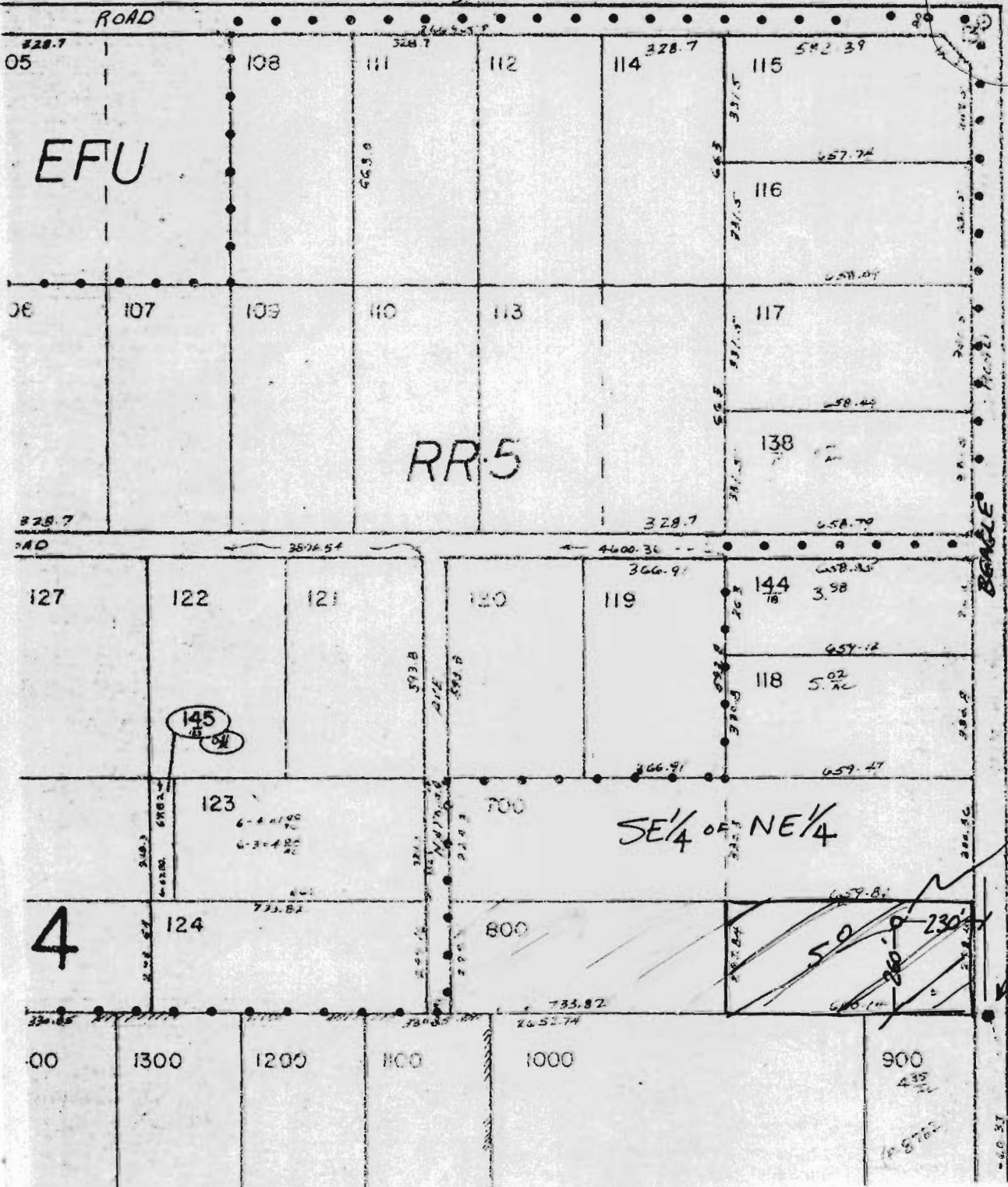
WATER RESOURCES DEPT. SALEM, OREGON

35 2W 13

T 35 S. R. 2W SECTION 13

1"=400'  
V12

DIV. PT WELL LOCATED  
260' N & 230' W OF E 1/4 COR SECTION 13  
T 35 S. R. 2W SE 1/4 NE 1/4



N  
SCALE  
1" = 400'

WELL LOCATION  
E 1/4 COR SECTION 13

35 W 18