

MAP TO ACCOMPANY GROUND WATER APPLICATION

SITUATED IN THE NE1/4 NE1/4 OF SECTION 32,
T39S, R10EWM, KLAMATH COUNTY, OREGON
FEBRUARY 1998

RECEIVED

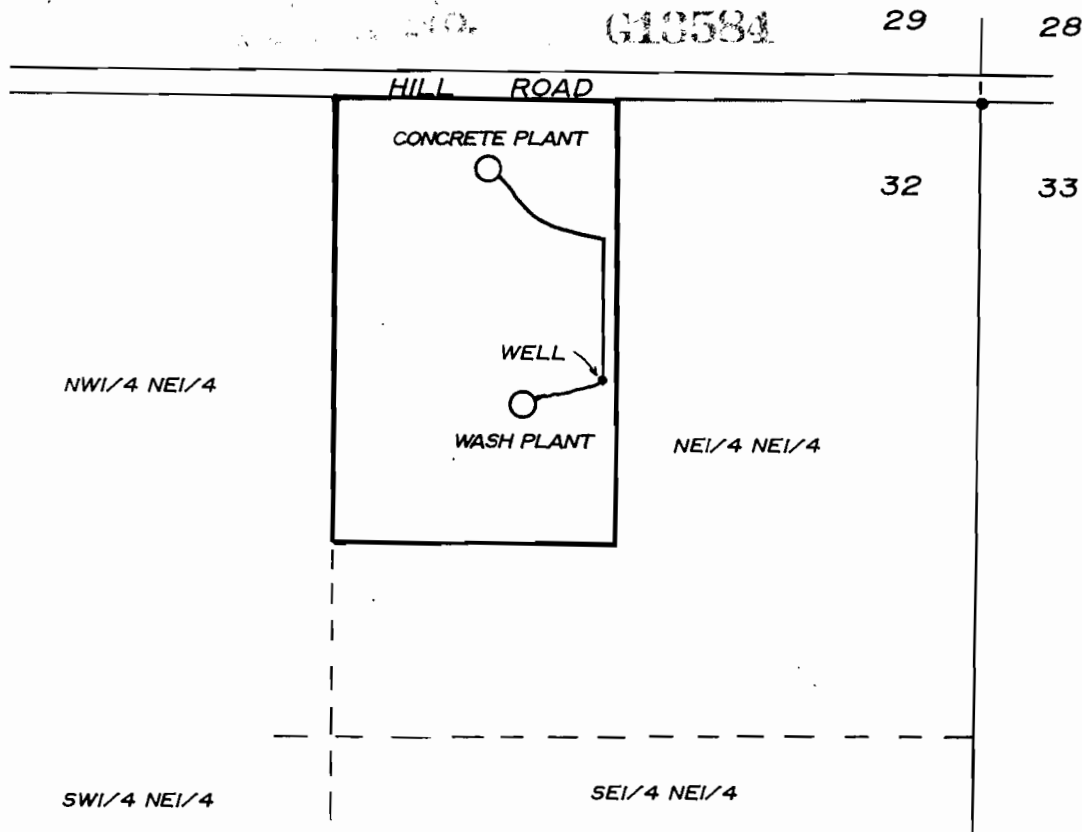
MAR 19 1998

WATER RESOURCES DEPT.
SALEM, OREGON

MAP PREPARED FOR
--KLAMATH PACIFIC CORP.--

G 14904

G13584

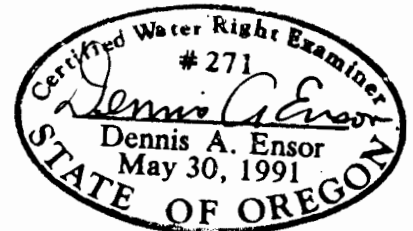


SCALE
1" = 400'

WELL LOCATION BY AERIAL PHOTOGRAPH
780 FEET WEST AND 590 FEET SOUTH
OF NORTHEAST CORNER OF SECTION 32

MAP PREPARED FROM KLAMATH COUNTY ASSESSOR MAP
AND AERIAL PHOTOGRAPHY.

LOCATION OF CONCRETE PLANT AND WASH PLANT BY OWNER



THE PURPOSE OF THIS MAP IS TO IDENTIFY THE LOCATION OF
THE WATER RIGHT. IT IS NOT INTENDED TO PROVIDE INFORMATION
RELATIVE TO THE LOCATION OF PROPERTY OWNERSHIP BOUNDARY
LINES.

TRU-LINE SURVEYING, INC.
2333 SUMMERS LANE
KLAMATH FALLS, OR. 97603