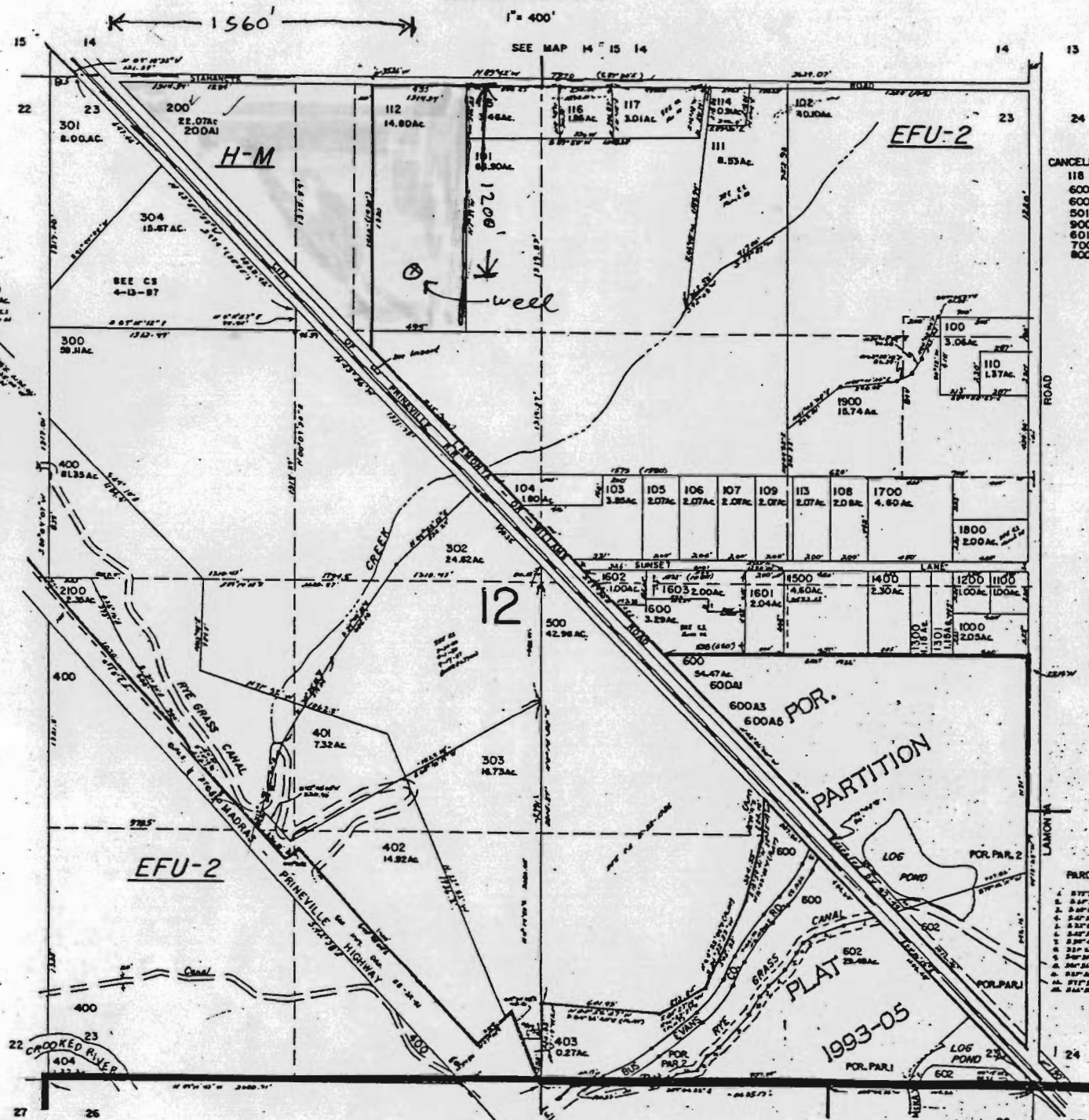
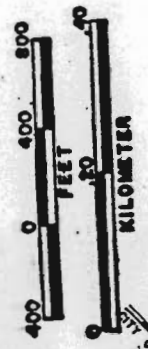


This map was prepared for assessment purpose only.

SECTION 23 T.14S R.15E W.M.
CROOK COUNTY

14 15 23

SCALE 1:9600



- CANCELLED NO'S
- 118
 - 600A4
 - 600A2
 - 501
 - 900
 - 601
 - 700
 - 800

WATER RESOURCES DEPT.
SALEM, OREGON

APR 16 1998

RECEIVED

Parcel No. 613590
614725

RECEIVED
JUL 15 1993
DEPT. OF REVENUE STATE OF OREGON
ASSESSMENT & APPRAISAL DIV.

PARCEL SIZE

1	1.00 AC
2	1.00 AC
3	1.00 AC
4	1.00 AC
5	1.00 AC
6	1.00 AC
7	1.00 AC
8	1.00 AC
9	1.00 AC
10	1.00 AC
11	1.00 AC
12	1.00 AC
13	1.00 AC
14	1.00 AC
15	1.00 AC
16	1.00 AC
17	1.00 AC
18	1.00 AC
19	1.00 AC
20	1.00 AC
21	1.00 AC
22	1.00 AC
23	1.00 AC
24	1.00 AC
25	1.00 AC
26	1.00 AC
27	1.00 AC