

RECEIVED

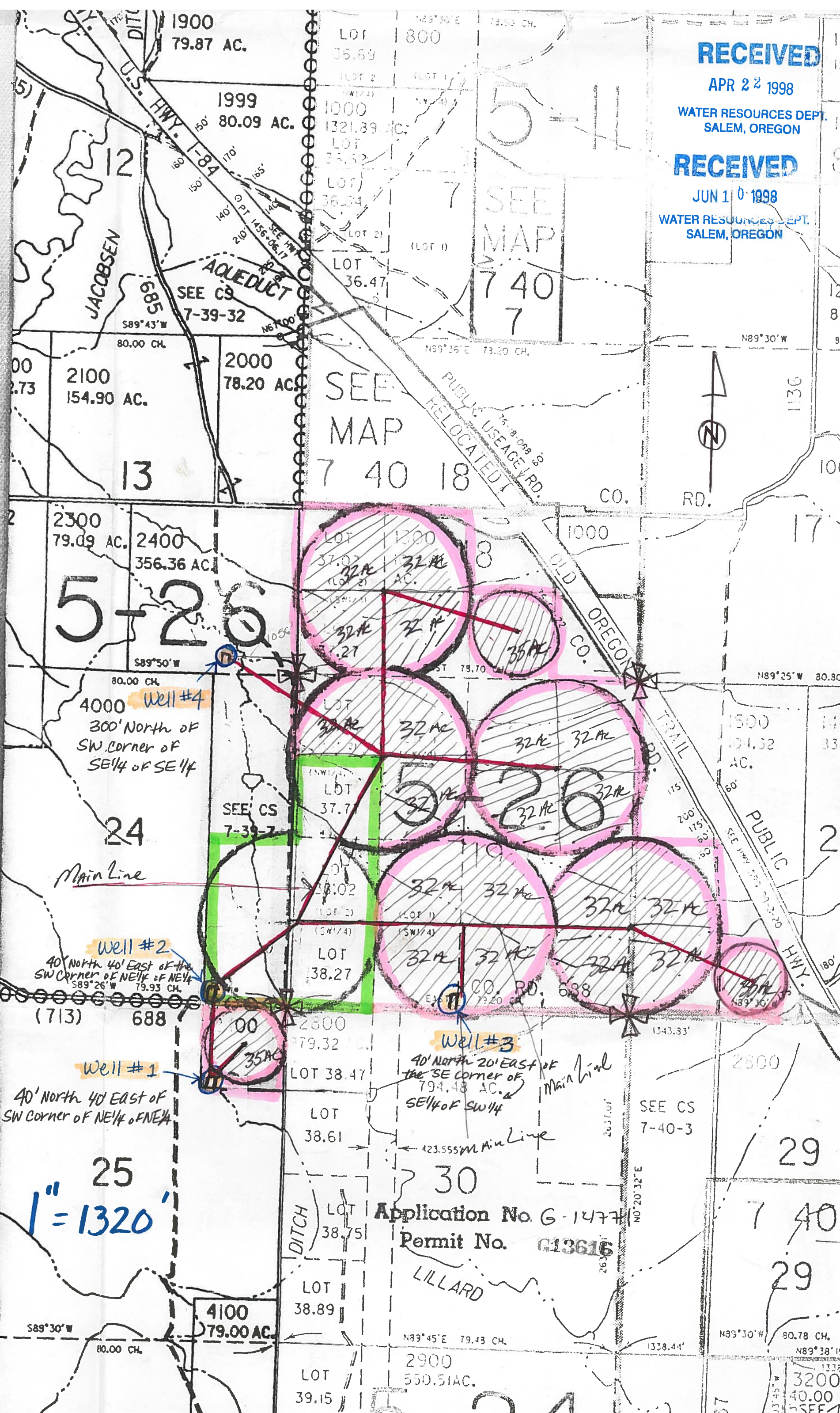
APR 22 1998

WATER RESOURCES DEPT.
SALEM, OREGON

RECEIVED

JUN 10 1998

WATER RESOURCES DEPT.
SALEM, OREGON



SEE
MAP
7 40 18

SEE
MAP
7 40
7

5-26

5-26

5-26

Well #4
300' North of
SW corner of
SE 1/4 of SE 1/4

Well #2
40' North 40' East of the
SW corner of NE 1/4 of NE 1/4

Well #1
40' North 40' East of
SW corner of NE 1/4 of NE 1/4

Well #3
40' North 20' East of
the SE corner of
SE 1/4 of SW 1/4

25
1" = 1320'

Application No. G-1477
Permit No. G13616

LILLARD

29

7 40

29

3200
40.00
SEE C