

Application Map for Rocky Prairie Farms

RECEIVED

JUN 16 1998

SECTION II T.2N. R.11E. W.M.

WASCO COUNTY

WATER RESOURCES DEPT.
SALEM, OREGON

Legal Description

1" = 400'

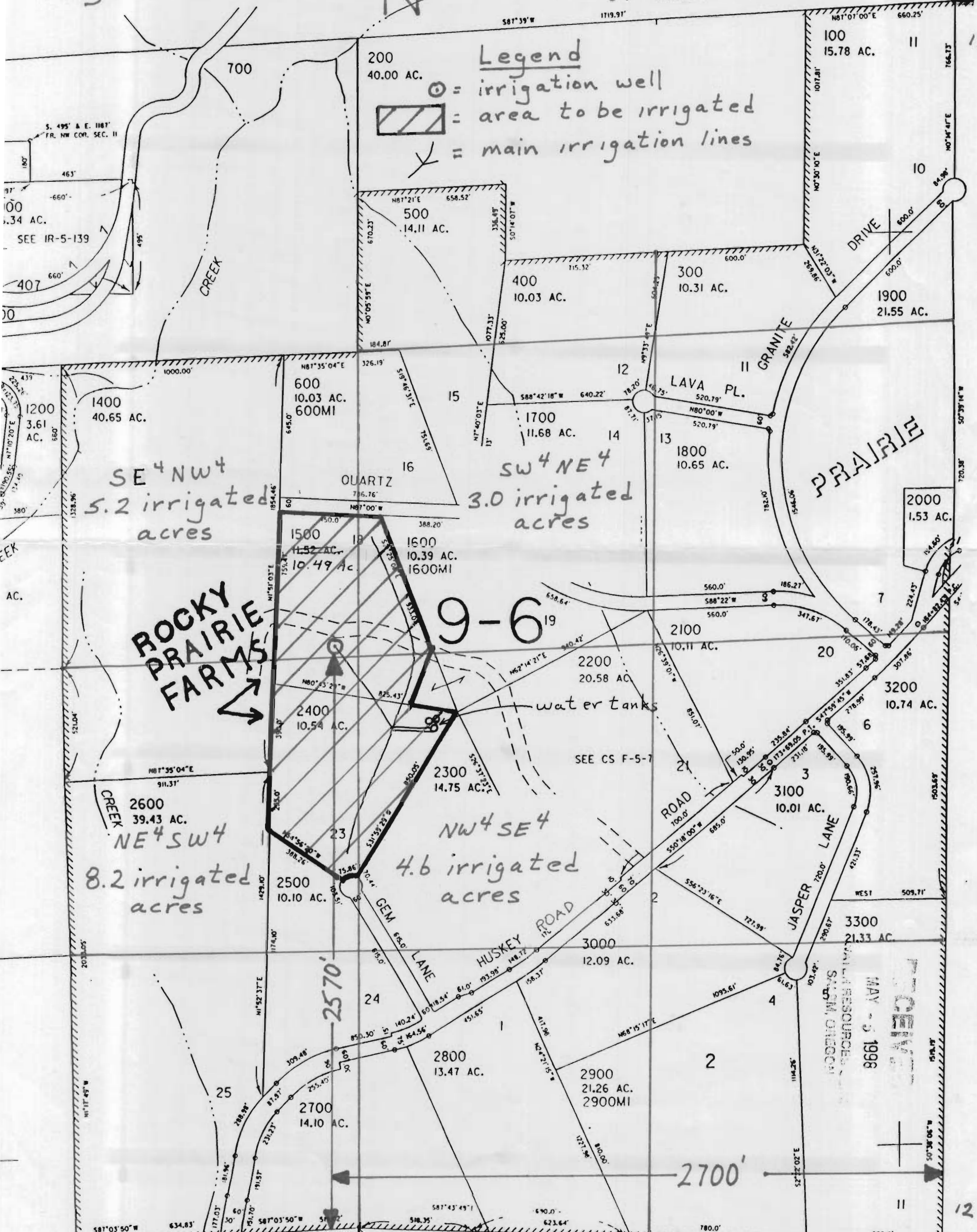
Lots 18 & 23 of
Rocky Prairie Subdivision

irrigation well location

2700' west of SE corner
of section II

and
2570' north of SE corner
of section II

- Legend**
- ⊙ = irrigation well
 - ▨ = area to be irrigated
 - = main irrigation lines



SE⁴NW⁴
5.2 irrigated
acres

SW⁴NE⁴
3.0 irrigated
acres

ROCKY
PRAIRIE
FARMS

9-6

NE⁴SW⁴
8.2 irrigated
acres

NW⁴SE⁴
4.6 irrigated
acres

Application No. G14773
Permit No. G13633

RECEIVED
MAY 15 1998
WATER RESOURCES DEPT.
SALEM, OREGON