

T 6N R 35E  
SECTION 34

Application No. G-14831  
Permit No. G 13656

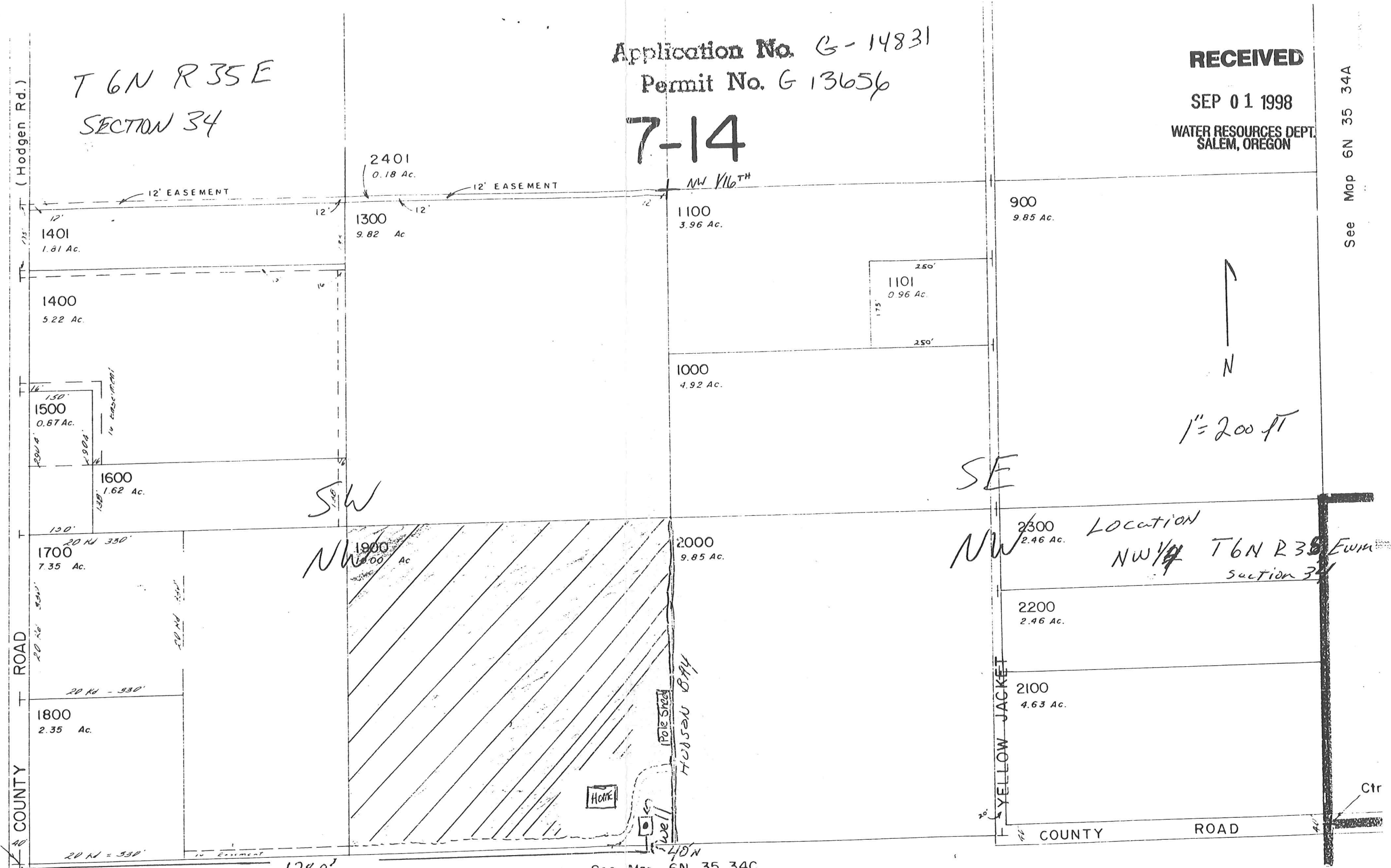
7-14

RECEIVED

SEP 01 1998

WATER RESOURCES DEPT.  
SALEM, OREGON

See Map 6N 35 34A



1" = 200 ft

LOCATION  
NW 1/4 T6N R35E  
SECTION 34

Pod Location  
1280' east of corner section (W 1/4)  
40' NORTH

W 1/4  
CORNER

6N 35