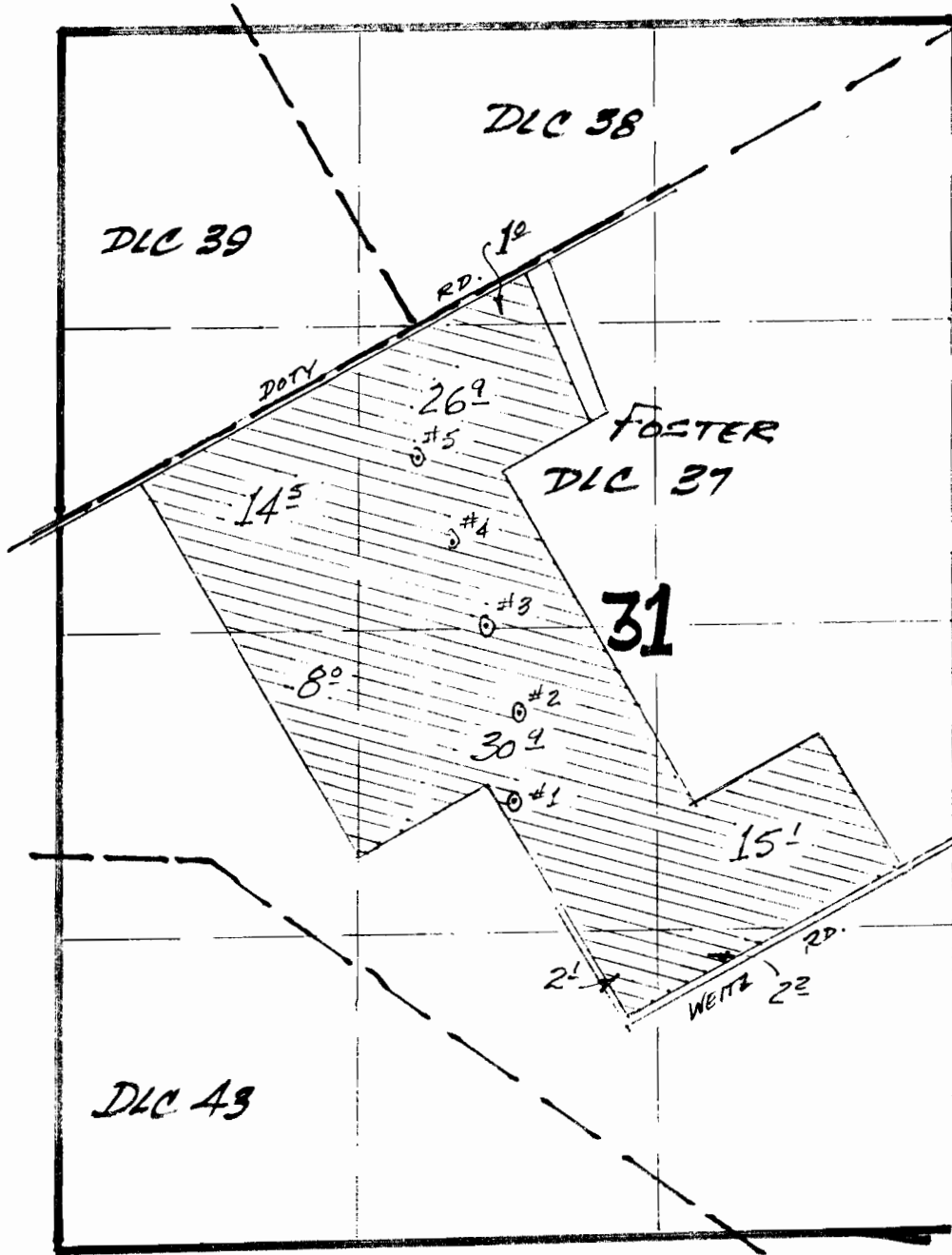


RECEIVED

DEC 10 1998

WATER RESOURCES DEPT.
SALEM, OREGON

T. 2 S., R. 4 E., W. M.



N

SCALE: 1" = 800ft.

Proposed
Well Locations:

- #1 - 2180'S. & 440'E.
 - #2 - 1720'S. & 460'E.
 - #3 - 1320'S. & 320'E.
 - #4 - 950'S. & 160'E.
 - #5 - 560'S. & 10'E.
- all from the SW
Cor. DLC 38.

MAP TO ACCOMPANY APPLICATION # G-14876
G-13691

IN THE NAME OF
PATTERSON NURSERY SALES