

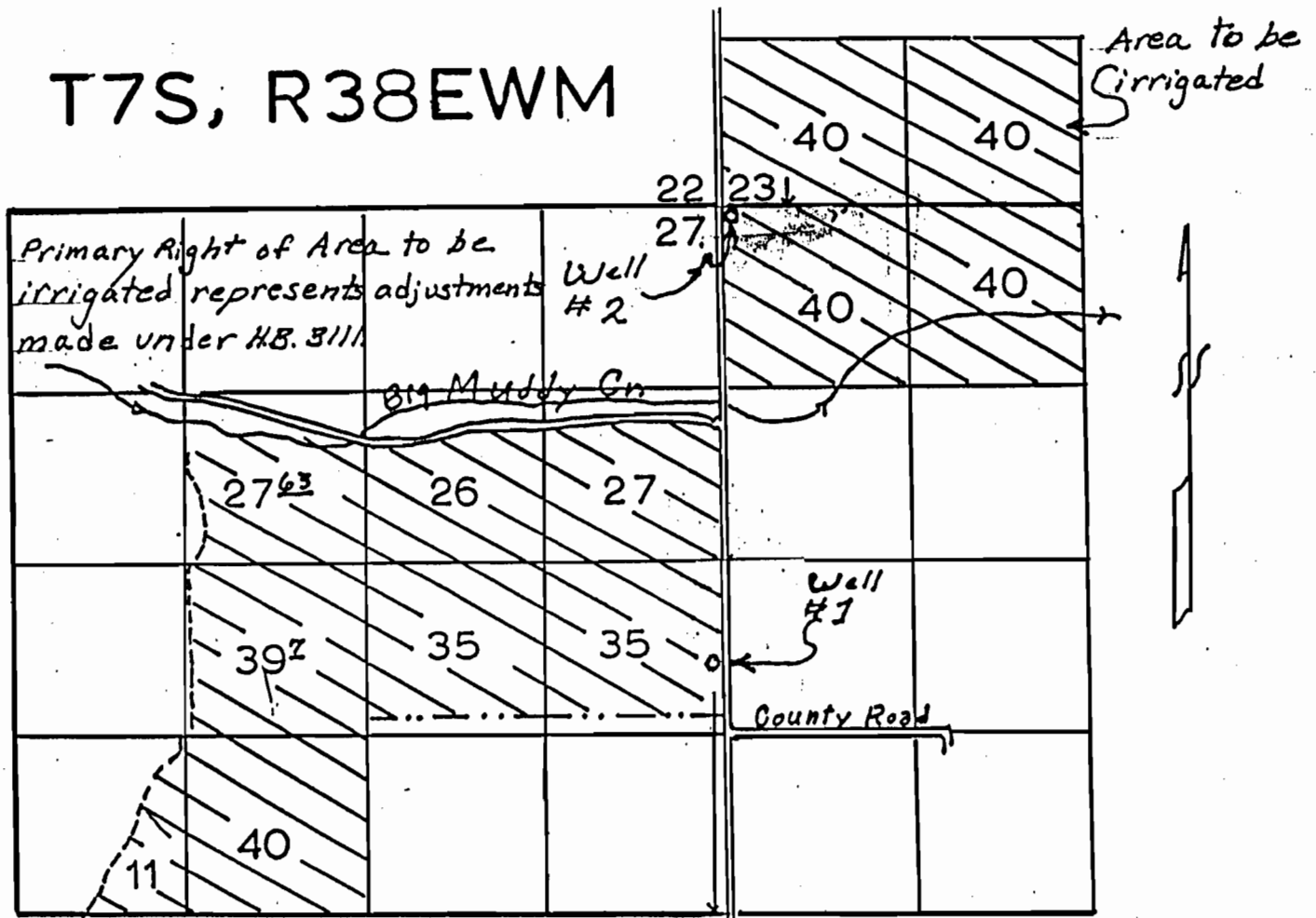
RECEIVED

DOUGLAS NEWMAN

SEP 30 1996

WELL FOR SUPPLEMENTAL IRRIGATION WATER RESOURCES DEPT. SALEM, OREGON

T7S, R38EWM

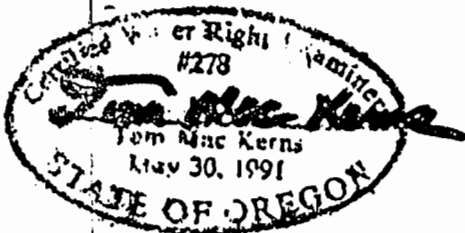


Scale 1" = 1320'

Well number 1 is located 2055 ft south and 50 ft west of the corner common to sections 23, 23, 26 & 27 T. 8S.; R. 38E.; WM.

Well number 2 is located 10 ft south and 50 ft east of the corner common to sections 23, 23, 26 & 27 T. 8S.; R. 38E.; WM.

Drawn by JEN Date 8-26-94
Revised by TMK Date 9-23-96



SHEET 1 of 2

A. G-13804
P. C-13738