

RECEIVED

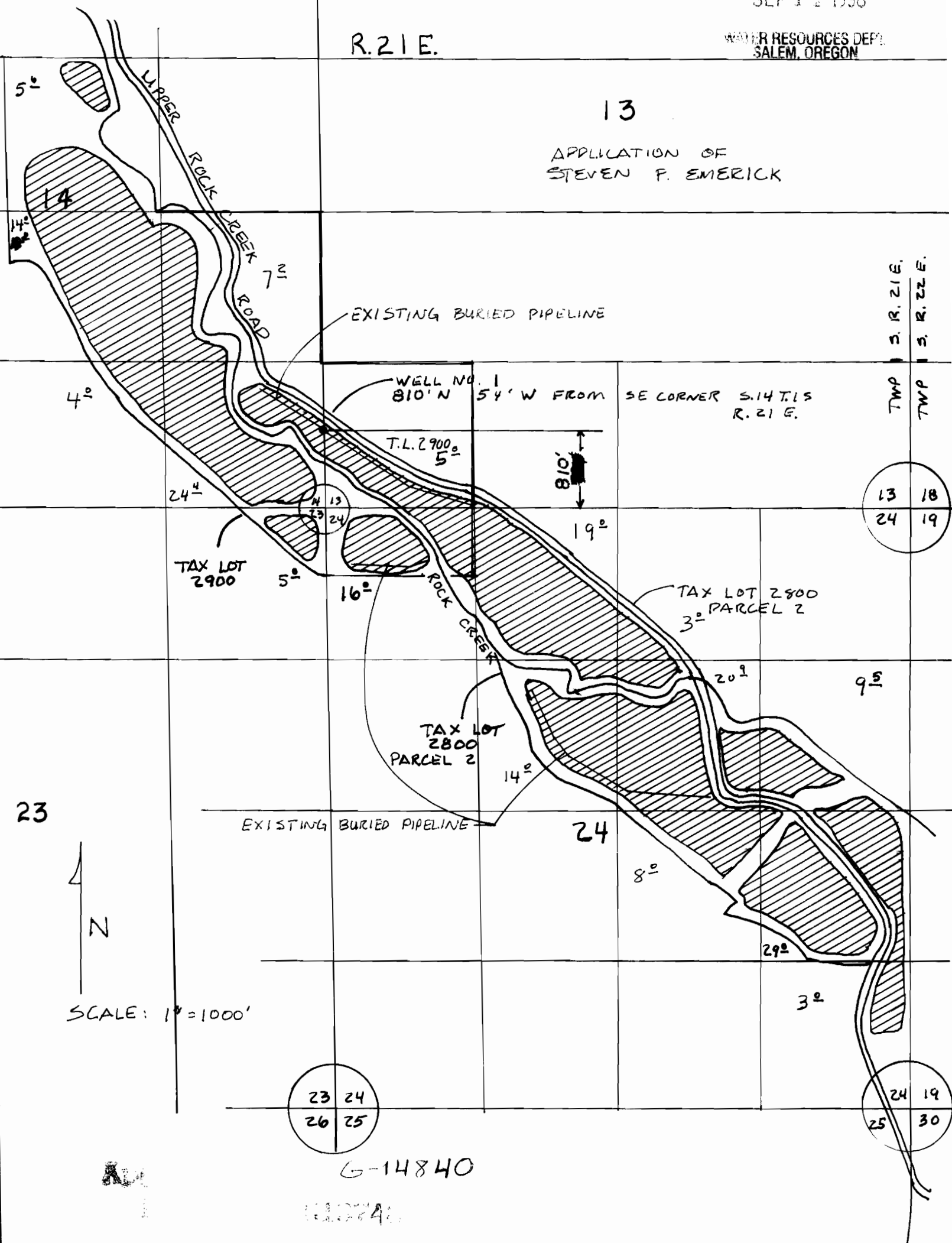
SEP 14 1998

WATER RESOURCES DEPT.
SALEM, OREGON

R. 21 E.

13

APPLICATION OF
STEVEN F. EMERICK



S. R. 21 E.	S. R. 22 E.
TWP 13	TWP 18
TWP 24	TWP 19

13	18
24	19

23	24
26	25

24	19
25	30

SCALE: 1" = 1000'

G-14840

000000