

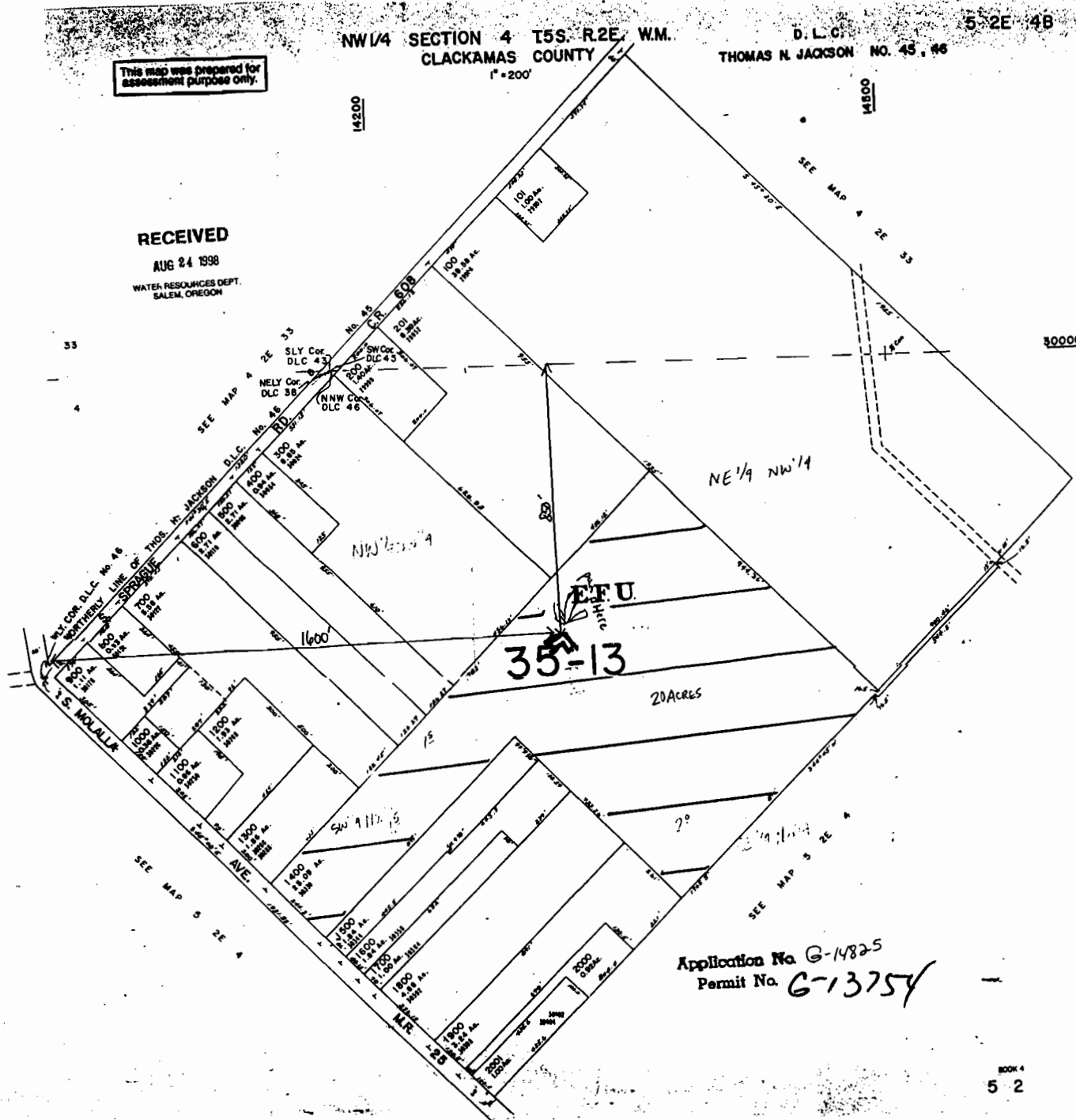
This map was prepared for assessment purpose only.

NW 1/4 SECTION 4 T5S. R2E. W.M.
CLACKAMAS COUNTY
1" = 200'

D. L. C.
THOMAS N. JACKSON NO. 45, 46
5 2E 4B

RECEIVED

AUG 24 1998
WATER RESOURCES DEPT.
SALEM, OREGON



Application No. G-14825
Permit No. G-13754