

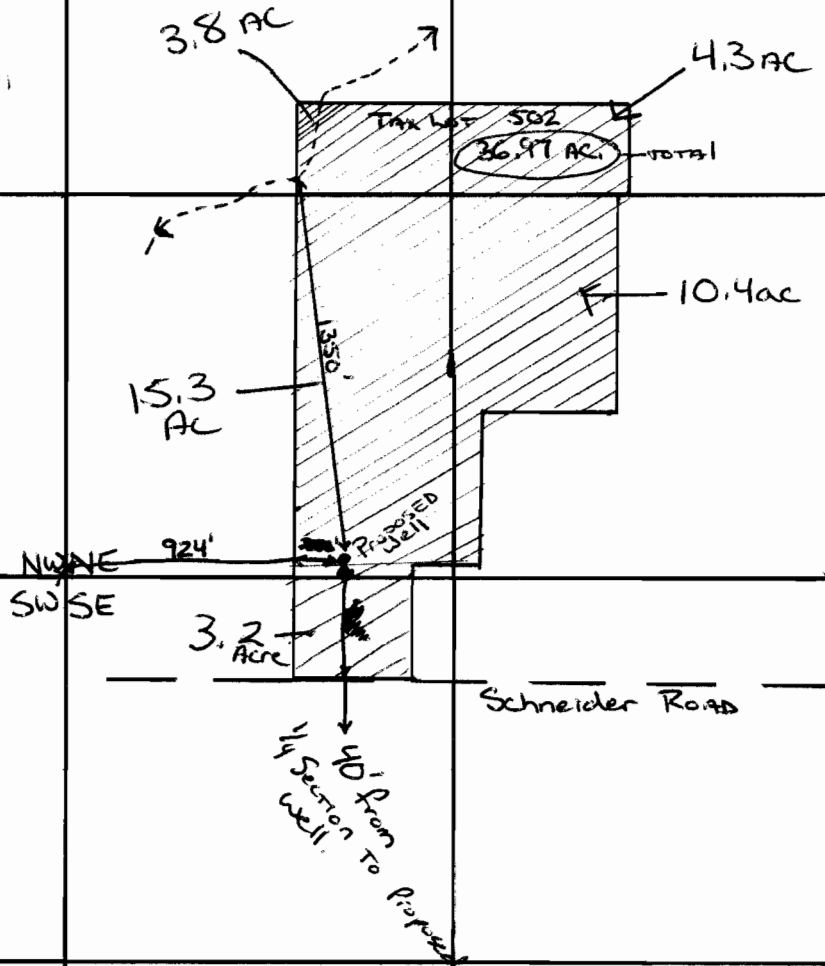
App. G 14942

Per. G-13776

RECEIVED

MAR 01 1999

WATER RESOURCES DEPT  
SALEM, OREGON




T.5S R.1W SECTION 13 Displayed by 1/4, 1/4 Section



1 inch = 660'

----- = Stream or Drainage Ditch?

———— = County Road

 = Area to be irrigated (33.21 total acres)