

16.2

RECEIVED

JUN 0 9 1989

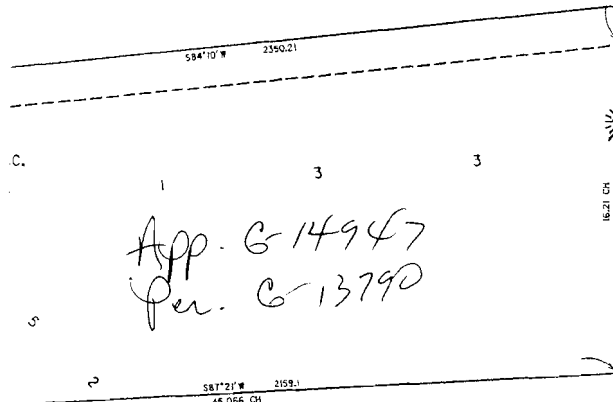
WATER RESOURCES DEPT. SALEM, OREGON

RECEIVED

MAR 1 6 1999

WATER RESOURCES DEPT. SALEM, OREGON

SEE MAP 3 3 07



App. G 14947
Per. G 13790

101
3.78 AC.

00
1.8 AC.

SW COR J DERBY CERT. CLAIM

① omit ↓ (2.8ac) PT 2
② add ↓

NW COR MARTIN OLDS
DLC NO 89

1500 REF
PTO 3713-100

GOV
LOT

24.6 ac
NESE

20.24 ac
Mainline
2 1/2" NWSW

GOV
LOT

SE COR ANDREW SHUCK
DLC NO 48

SESE

SWSW

NE COR W ROBERTS
DLC NO 49

3.66 ac

Mainline
2 1/2"

SECTION 13 T3S R4W W.M.
YAMHILL COUNTY
1" = 400'

100
202.1 AC.
PTO 1412-1500 REF

FIL

CANCEL 1100

300
23 AC.

400
40.98 AC.

401
204 AC.

C S P 9 3 2 1
C S P 7 7 0 1

NENE

NWNW

02
1.85 AC.

5.5 ac

2.5 ac

SENE

SWNW

3540

SW COR FELIX G DORRIS
DLC NO 48

well location

1200
5.15 AC.

1000
5.25 AC.

900
10.53 AC.

800
10.32 AC.

700
5.17 AC.

ORCHARD
CSP 6863

NO 3

SE COR W ROBERTS
DLC NO 49

SW COR MARTIN OLDS
DLC NO 89

SEE MAP 3 4 1