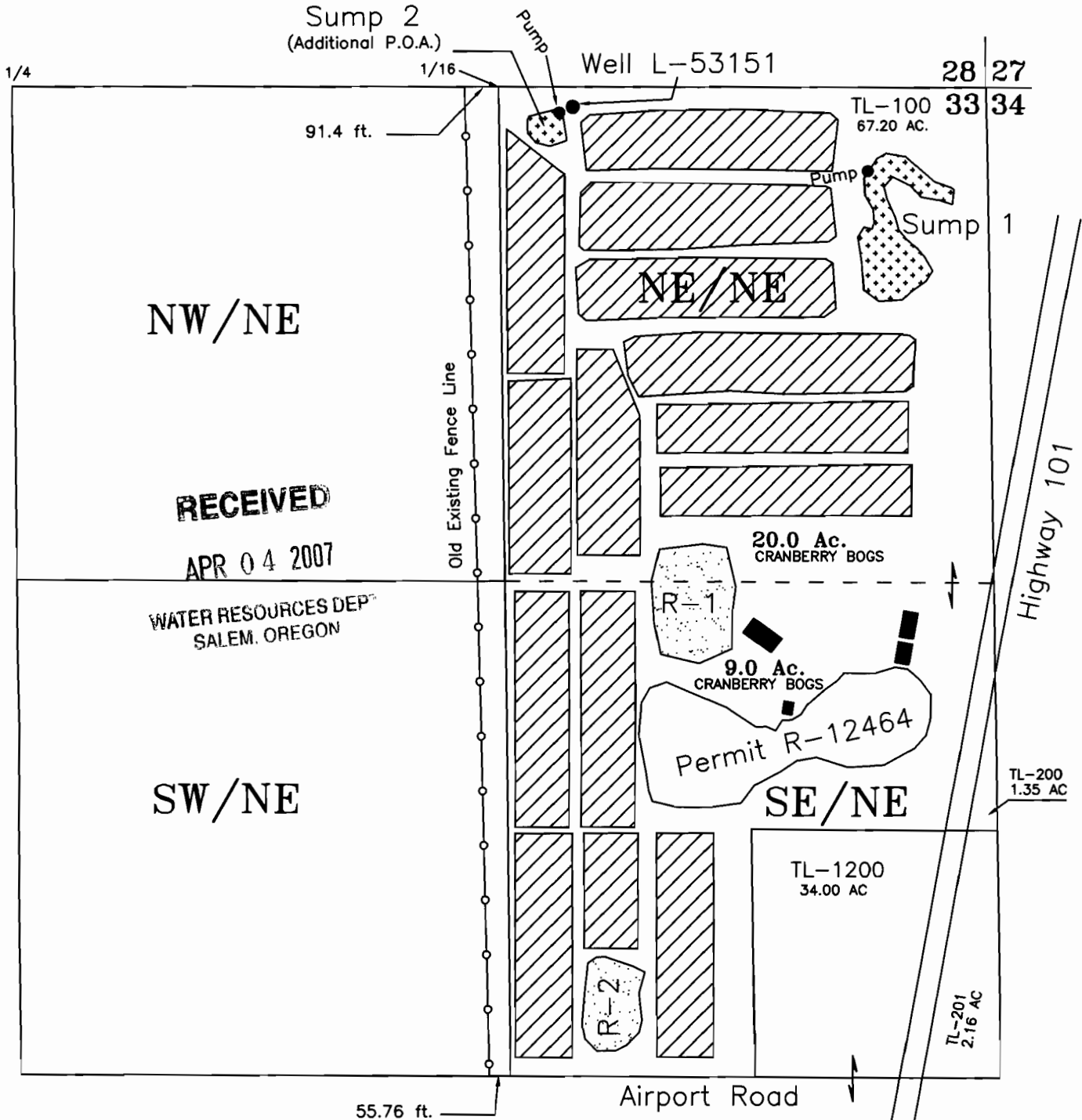


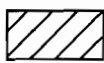
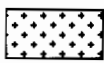
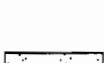
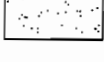



# Permit Amendment G-13794

Change in Place of Use & Add Additional Point of Appropriation

## Coventry Farms, LLC (Adrienne Good)

NE 1/4 SECTION 33, T 31S, R 15W, WM  
CURRY COUNTY



-  Cranberry Bogs - 29.0± Acres Total  
(Permit place of use - 29 Acres NE/NE, Section 33)
-  { Sump 1 Center - NE/NE, 450 feet South & 260 feet West\*  
Pump - NE/NE, 220 feet South & 320 feet West\*
-  { Sump 2 Center - NE/NE, 110 feet South & 1170 feet West\*  
Pump - NE/NE, 70 feet South & 1140 feet West\*
-  { Recovery Pond, R-1 Center - SE/NE, 1370 feet South & 795 feet West\*  
Recovery Pond, R-2 Center - SE/NE, 2440 feet South & 1030 feet West\*
-  Well (L-53151) - 50 feet South & 1100 feet West\*
-  Buildings
-  Pumps

\*All measurements from the NE Corner of Section 33  
(Distances are approximate)

Base map CS 31-187 overlaid on aerial photo from Curry County web site on 1/31/2007

LOCATIONS PER 1/4 1/4 ARE DERIVED BY ASSUMED FIT  
OF AERIAL PHOTO ORIENTATION TO GROUND SURVEYS  
AND/OR TAX ASSESSOR MAPS.

The purpose of this map is to identify the location of the water right.  
It is not intended to provide information relative to the location of  
property ownership lines.



Scale  
1 inch = 400 feet



10560

JORDAN ENGINEERING  
460 JORDAN LANE  
ROSEBURG, OR 97470  
(541) 673-1931  
2/23/2007 n.e.d.