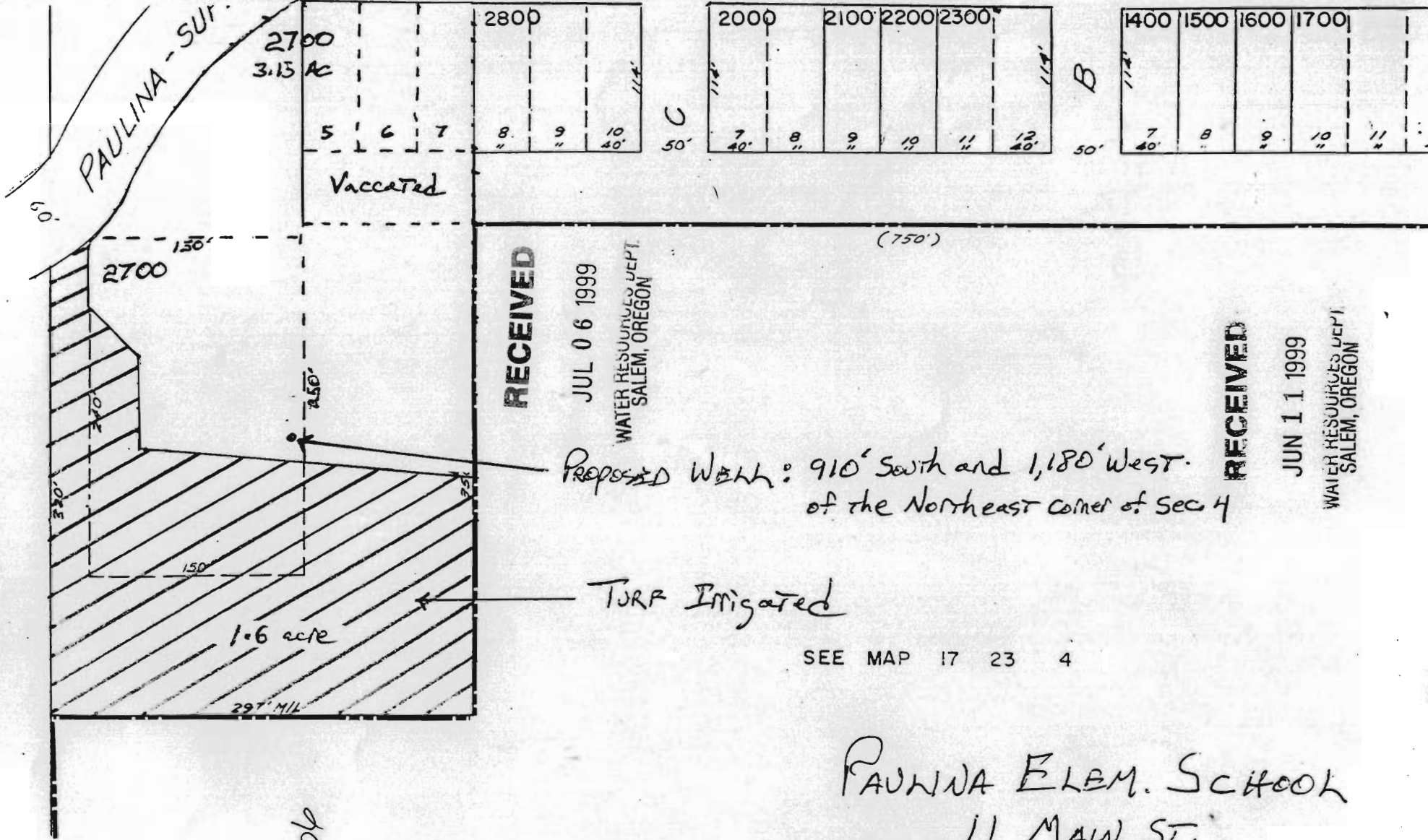


SEE MAP 17 23 4



APP-G-15004

SEE MAP 17 23 4

PAULINA ELEM. SCHOOL
 11 MAIN ST.
 Paulina, OR. 97751
 Township 17S
 Range 23E
 Section 44A
 Tax Lot 2700

RECEIVED

NE 1/4 NW 1/4 SEC. 6 T.15 S. R.16 E.W.M.
CROOK COUNTY

Well Location:
10' South, 238' West
of North 1/4 corner.

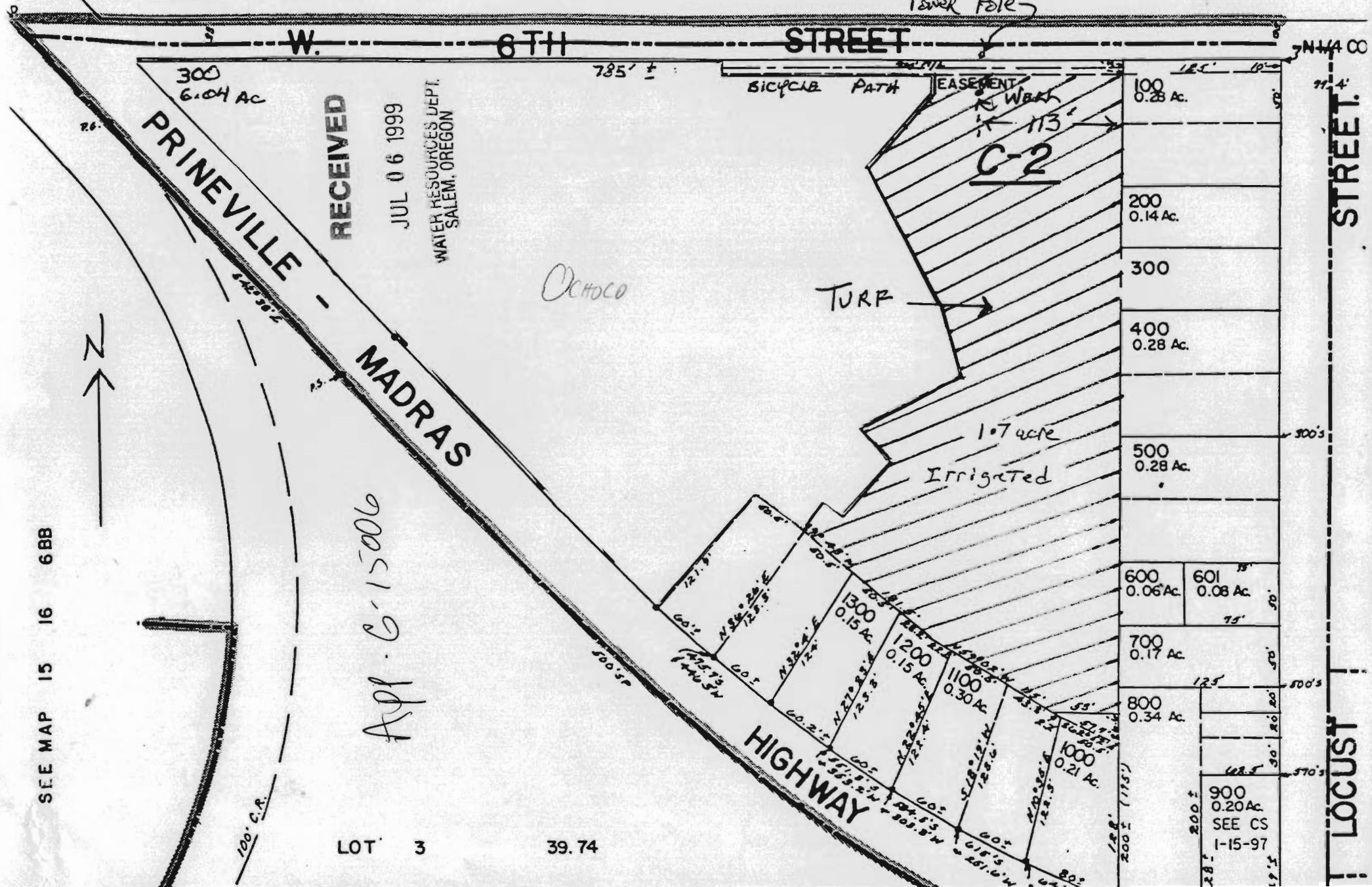
JUN 11 1999

1" = 100'

WATER RESOURCES DEPT.
SALEM, OREGON

SEE MAP 14 16 31C

SEE MAP 14 16 31C
Power Pole



RECEIVED

JUL 06 1999

WATER RESOURCES DEPT.
SALEM, OREGON

300
6.04 Ac
PRINEVILLE -
MADRAS

OCHOCO

TURP

1.07 acre
Irrigated

SEE MAP 15 16 68B

App. G-15006

LOT 3

39.74

- 100 0.28 Ac
- 200 0.14 Ac
- 300
- 400 0.28 Ac
- 500 0.28 Ac
- 600 0.06 Ac
- 601 0.08 Ac
- 700 0.17 Ac
- 800 0.34 Ac
- 1000 0.21 Ac
- 900 0.20 Ac
SEE CS
1-15-97

LOCUST STREET