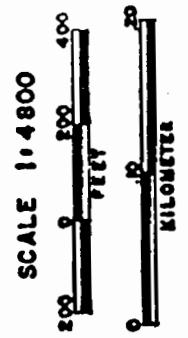


7. 1 south
R. 3 east

North

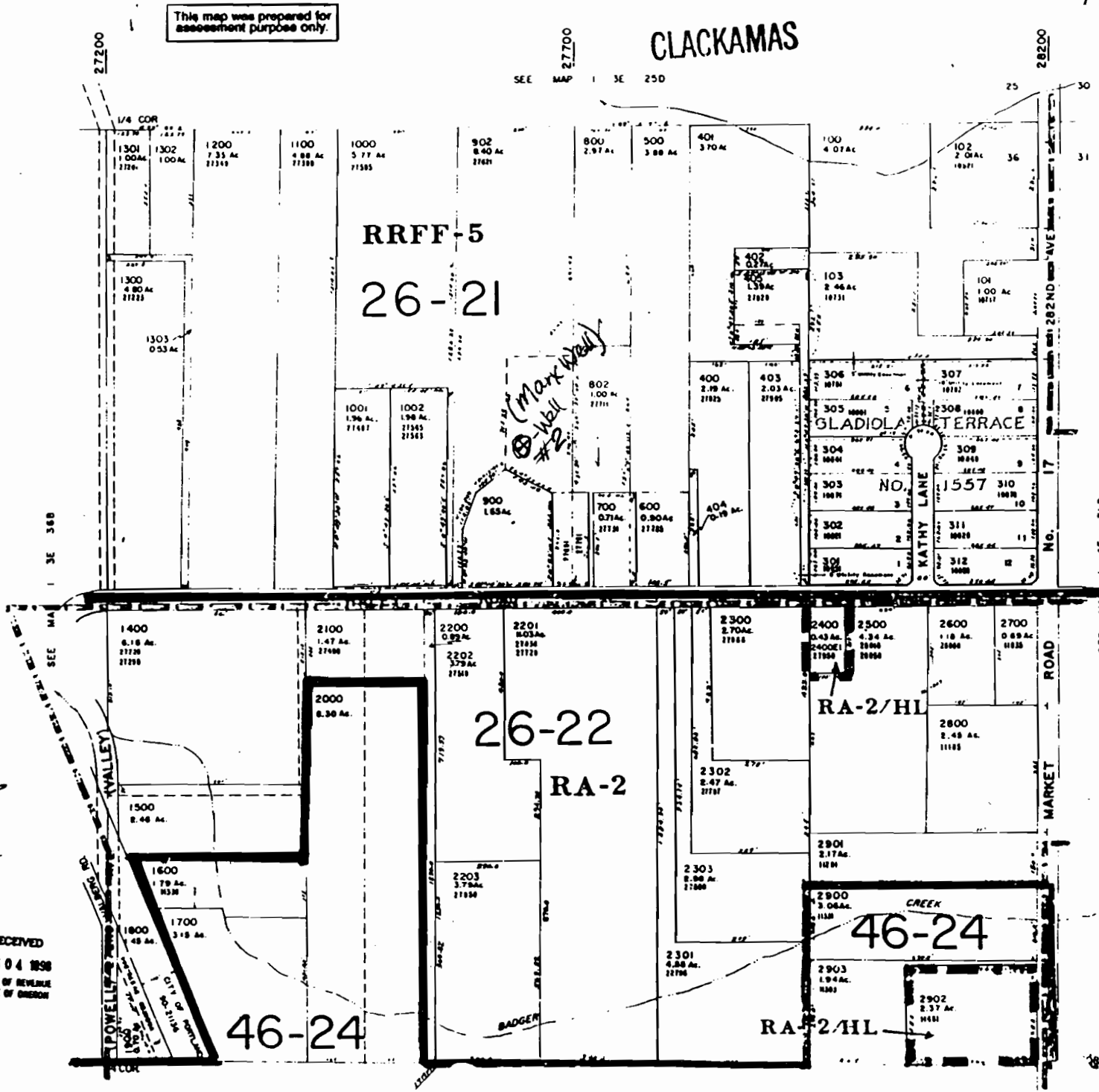


This map was prepared for assessment purposes only.

1" = 200'

13E 36A

CLACKAMAS



Scale

1" = 400'

Well #2-
POD location
1535 ft. west &
895 ft. south of
the NE corner of
Section 36.

RECEIVED
JUN 04 1998
DEPT. OF REVENUE
STATE OF OREGON

Cancellation 10500
TL 200
300
400
500

Application No. 915184
Permit No. 913882

11500