

1" = 400'

RECEIVED

JUN 20 2000

WATER RESOURCES DEPT.
SALEM, OREGON

SEE MAP 38 5

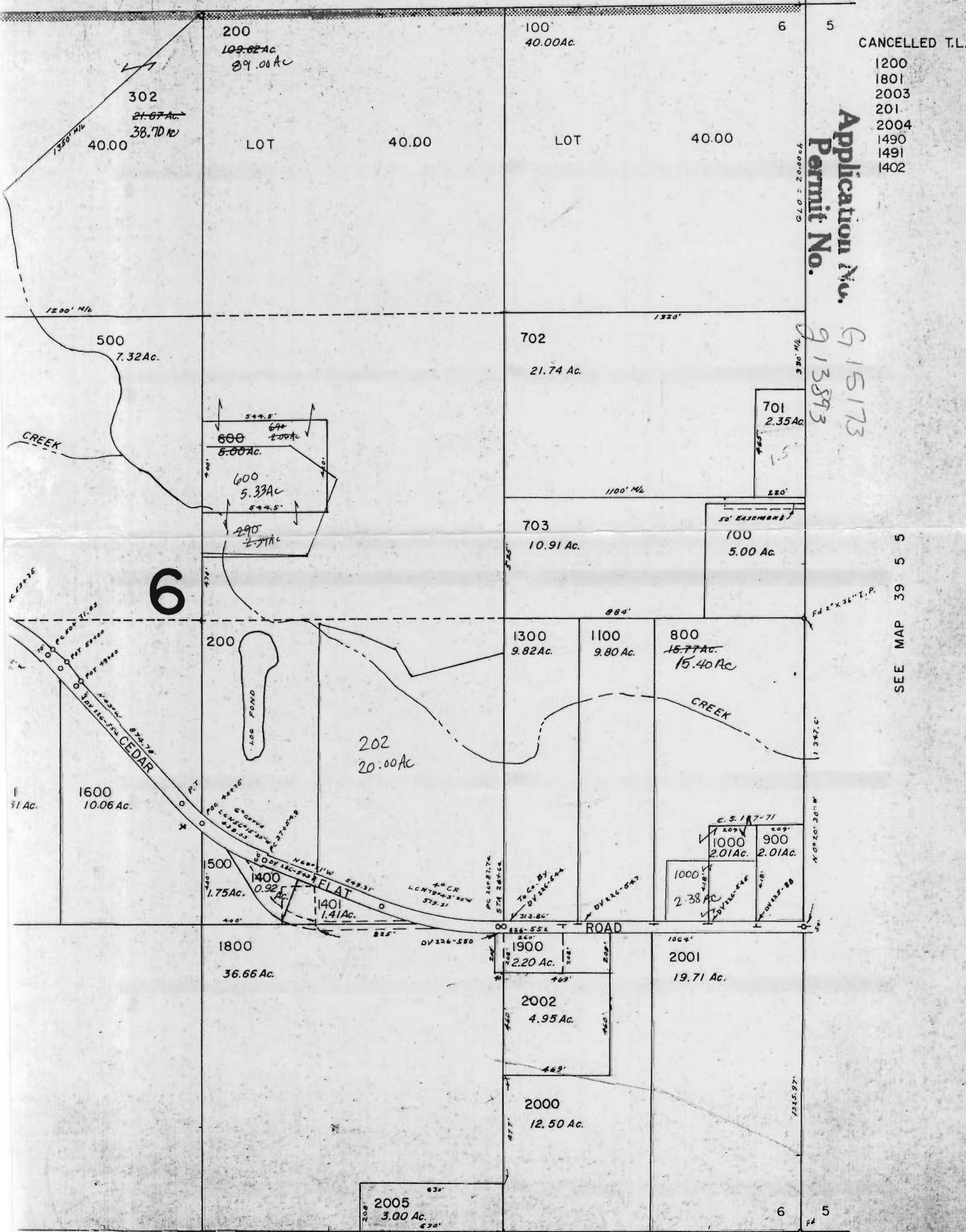
STANDARD

PARALLEL

SOUTH

31

32



CANCELLED T.L.

- 1200
- 1801
- 2003
- 201
- 2004
- 1490
- 1491
- 1402

Application No. **G 15173**
 Permit No. **9135893**

SEE MAP 39 5 5