

RIVERCREST

3 2
10 11

SUNSET AVENUE

COMMERCIAL ST
ROAD TO PUBLIC

RIVER ROAD NORTH



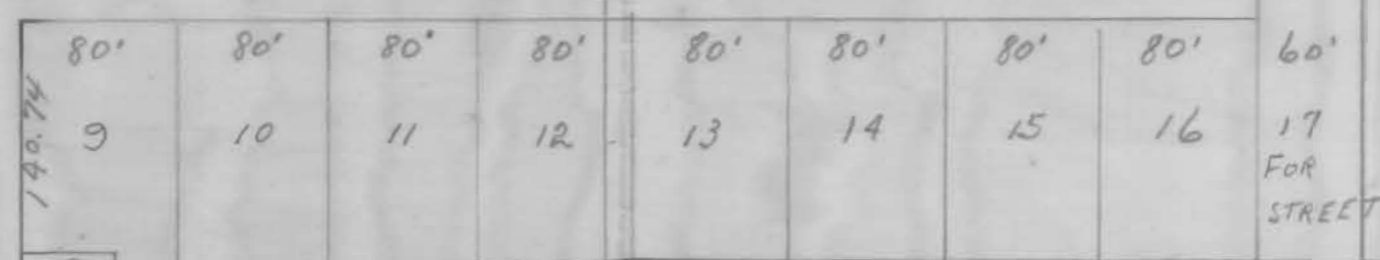
N.E. 1/4 N.E. 1/4 Sec. 10

Future Development

N.W. 1/4 N.W. 1/4 Sec. 11

Greenhouse

DENNIS LAINE



342.21

327.10

1299.62

Business

WELL AND PUMP HOUSE
2592.6 ft South
1269.6 ft West
from N.E. corner
T.D. Keizer D.H.C. NR 38

Future Development

Scale 1 in = 100 ft

PROPOSED SUBDIVISION

FOR

O. H. DUNCAN

Sec 11 T7 S. R 3 N. W.M. Marion County Oregon

G-222

RECEIVED
JUN 2 1956
STATE ENGINEER
SALMON CRESSON

Application No. G-222
Permit No. G-139