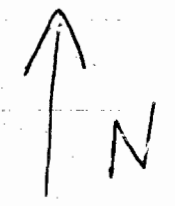


NW 1/4 Sec. 06 T.4N R.29 E.W.M.

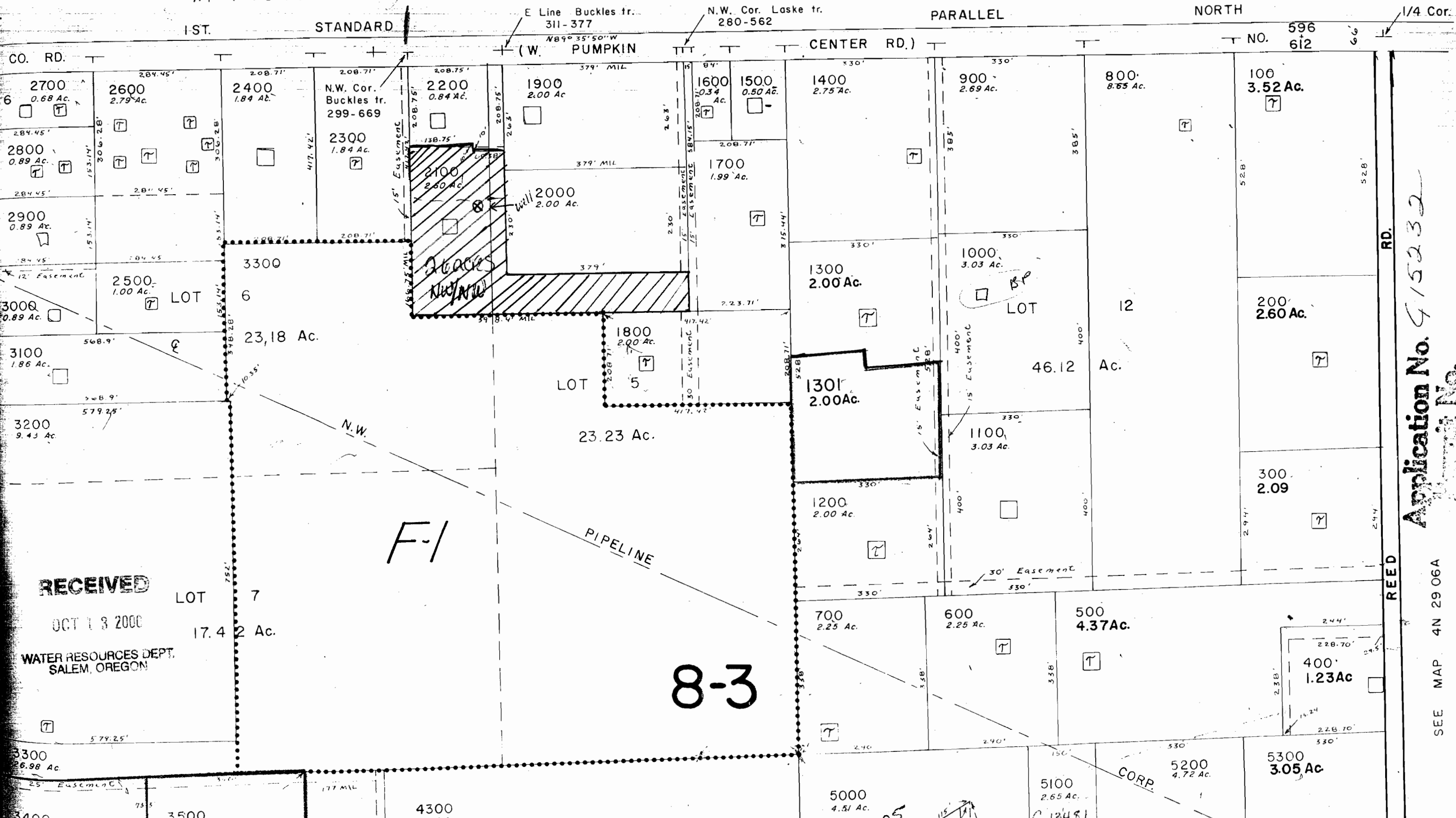
UMATILLA COUNTY

1" = 200'

SEE MAP 5N 29 31



Well is located: 200' west and 350' south of the N 1/4 corner of section 6, in 4 North 54 East.



RECEIVED

OCT 13 2000

WATER RESOURCES DEPT. SALEM, OREGON

Application No. 415232

SEE MAP 4N 29 06A