

LAKE A - STORM WATER RETENTION/WETLANDS
 LAKE B - 341,225 CF DEPTH - 7 FEET
 LAKE C - 524,130 CF DEPTH - 7 FEET
 LAKE D - 304,810 CF DEPTH - 8 FEET

* Are these lands included of 0.43 acres for the

Application No. G15104
 Permit No.

This map was prepared for assessment purpose only.

SECTION 21 T3S. R2E. W.M.
 CLACKAMAS COUNTY

SEE MAP 3 2E 16
 SEE MAP 3 2E 16

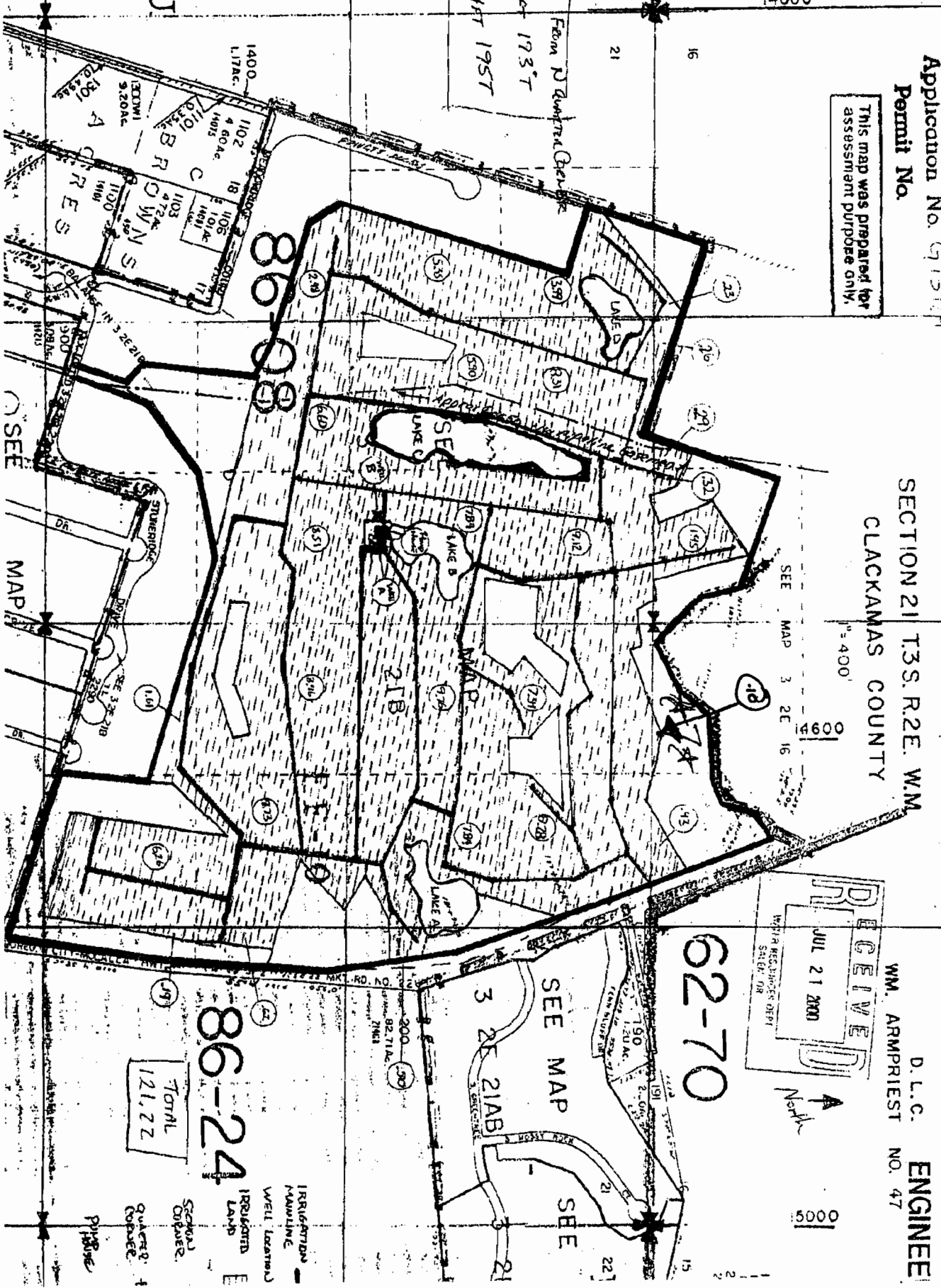
RECEIVED
 JUL 21 2000
 WITH REQUISITES DEPT
 SALES OR

D. L.C. ENGINEER
 WM. ARMPRIEST NO. 47

Will location
 A - 1110, 572 FT
 B - 1109, 304 FT 1937

EFFD

20 17
 20 21
 15 16



86-24
 TOTAL
 121.22

IRRIGATION CHANNELS
 WELL HEADINGS
 IRRIGATED LANDS
 SCHOOL CAMPUS
 QUARTERS
 CORPORATE