

Section 6 T.1S. R.14E. W.M.
SECTION 1 T.1S. R.13E. W.M.
WASCO COUNTY

1" = 400'

Location of well:
NW 1/4 SE 1/4 Sec. 1 T 1S R 13E

Cross hatched area is proposed irrigation development and is appx. 74.9 Tillable acres

Paul Limmeroth Irrigation Development

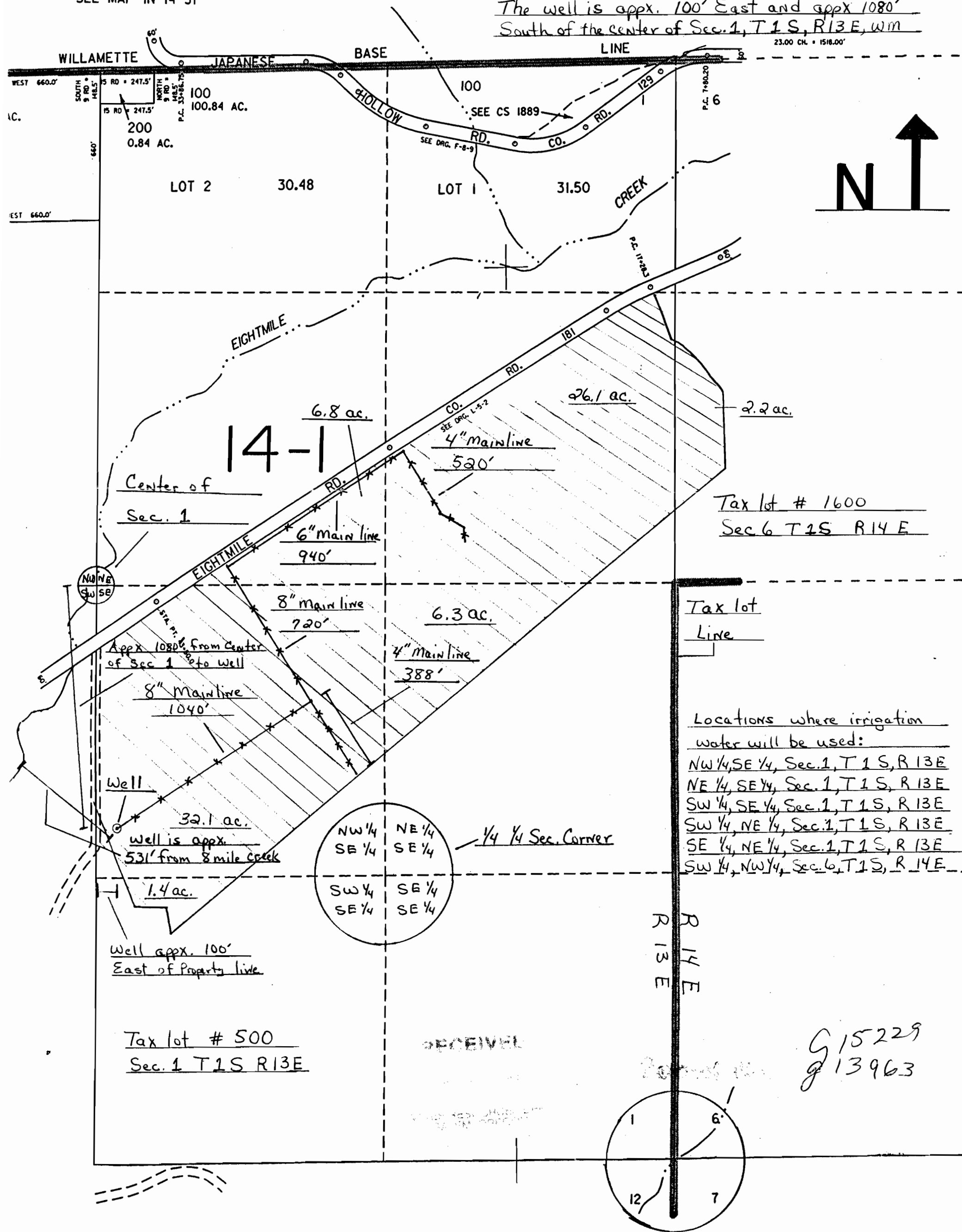
File G-15229

"Amended" Application Map

SEE MAP IN 14 31

The elevation at the well head is appx. 75' higher than the elevation at the surface of 8 mile creek.

The well is appx. 100' East and appx 1080' South of the center of Sec. 1, T 1 S, R 13 E, W.M



Tax lot # 1600
Sec 6 T 1S R 14 E

Tax lot
Line

- Locations where irrigation water will be used:
- NW 1/4, SE 1/4, Sec. 1, T 1 S, R 13 E
 - NE 1/4, SE 1/4, Sec. 1, T 1 S, R 13 E
 - SW 1/4, SE 1/4, Sec. 1, T 1 S, R 13 E
 - SW 1/4, NE 1/4, Sec. 1, T 1 S, R 13 E
 - SE 1/4, NE 1/4, Sec. 1, T 1 S, R 13 E
 - SW 1/4, NW 1/4, Sec. 6, T 1 S, R 14 E

Tax lot # 500
Sec. 1 T 1S R 13E

G 15229
g 13963

