



SCALE
1" = 1320' (1/4 mile)

RECEIVED

OCT 06 1999

WATER RESOURCES DEPT.
SALEM, OREGON.

SEE
8 3

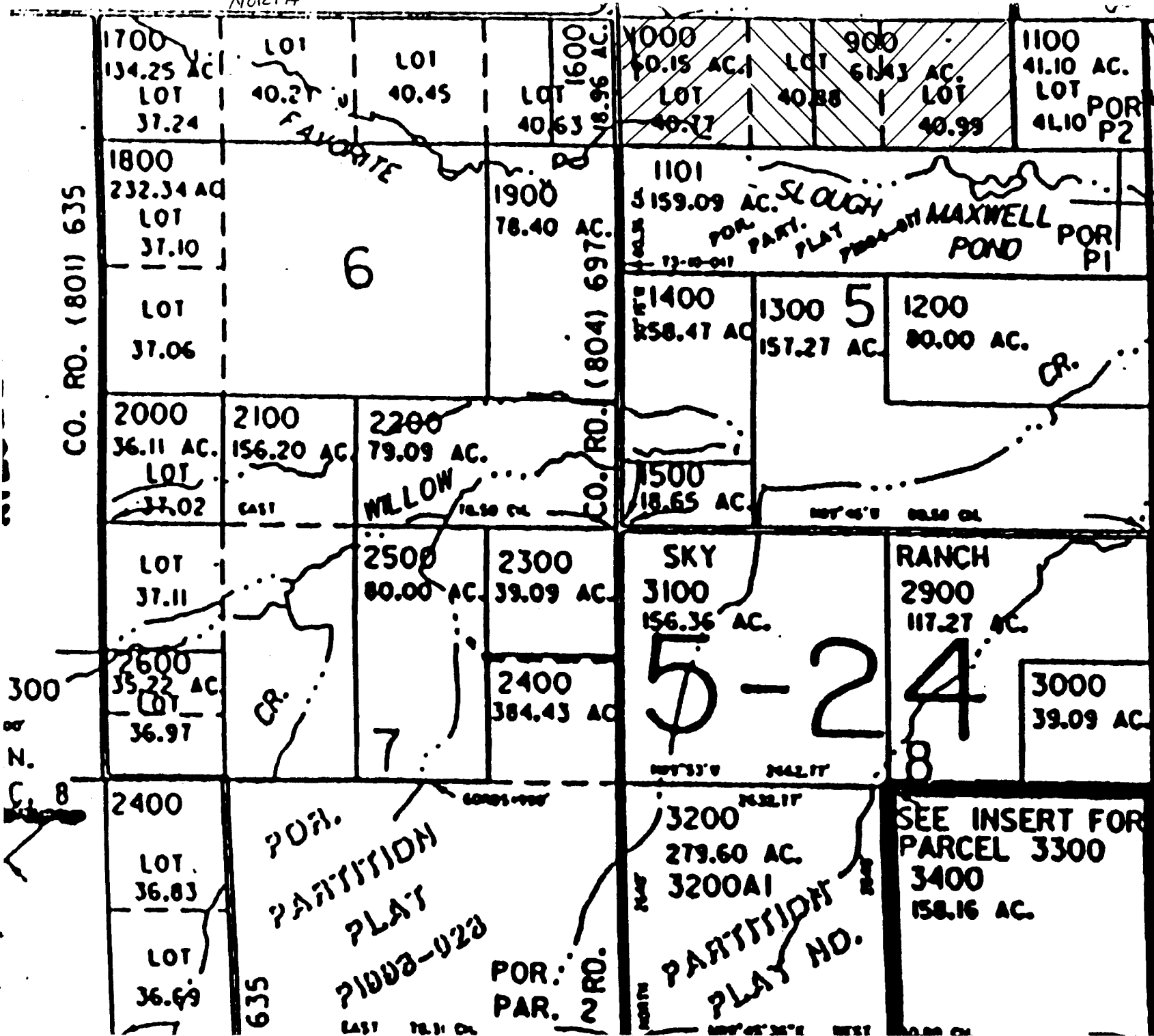
CO. R

DRIVE

SEE

8

CO. RD. (506) 699



CO. RD. (801) 635

CO. RD. (804) 697C

300

8

635

EAST 78.11 AC.

2 RD.

NORTH

WEST 45.36 AC.

WEST

SOUTH 40.00 AC.

EAST 88.50 AC.

WEST 45.36 AC.

R7S T39E

NORTH 3454 ROCK

CREEK

ROAD

BM

NEILL

PECK

ROAD 3346

3332

3391

3365

Sand

Fish

Creek

3457

North 31

3400

3370

3355

3340

Rock

EXISTING
Above Ground MAIN LINE

Creek

ROAD

k Creek
Cem

SOUTH

WELL

CREEK

Christensen

Slough

265' N E 118.6' E
ROCK
OF SW CORNER of Sec 32

98Ac

3378

BM 3450

BM 3394

3355

Favorite

45Ac

97Ac

Slough

WATER RESOURCES DEPT.
SALEM, OREGON

MAR 1 1999

RECEIVED

LANE

3420

WATER RESOURCES DEPT.
SALEM, OREGON

OCT 06 1999

RECEIVED

1" = 1320'
PIVOT //
Wheel line
MAIN LINE
3393 (New)

5

3367

ROAD

3380

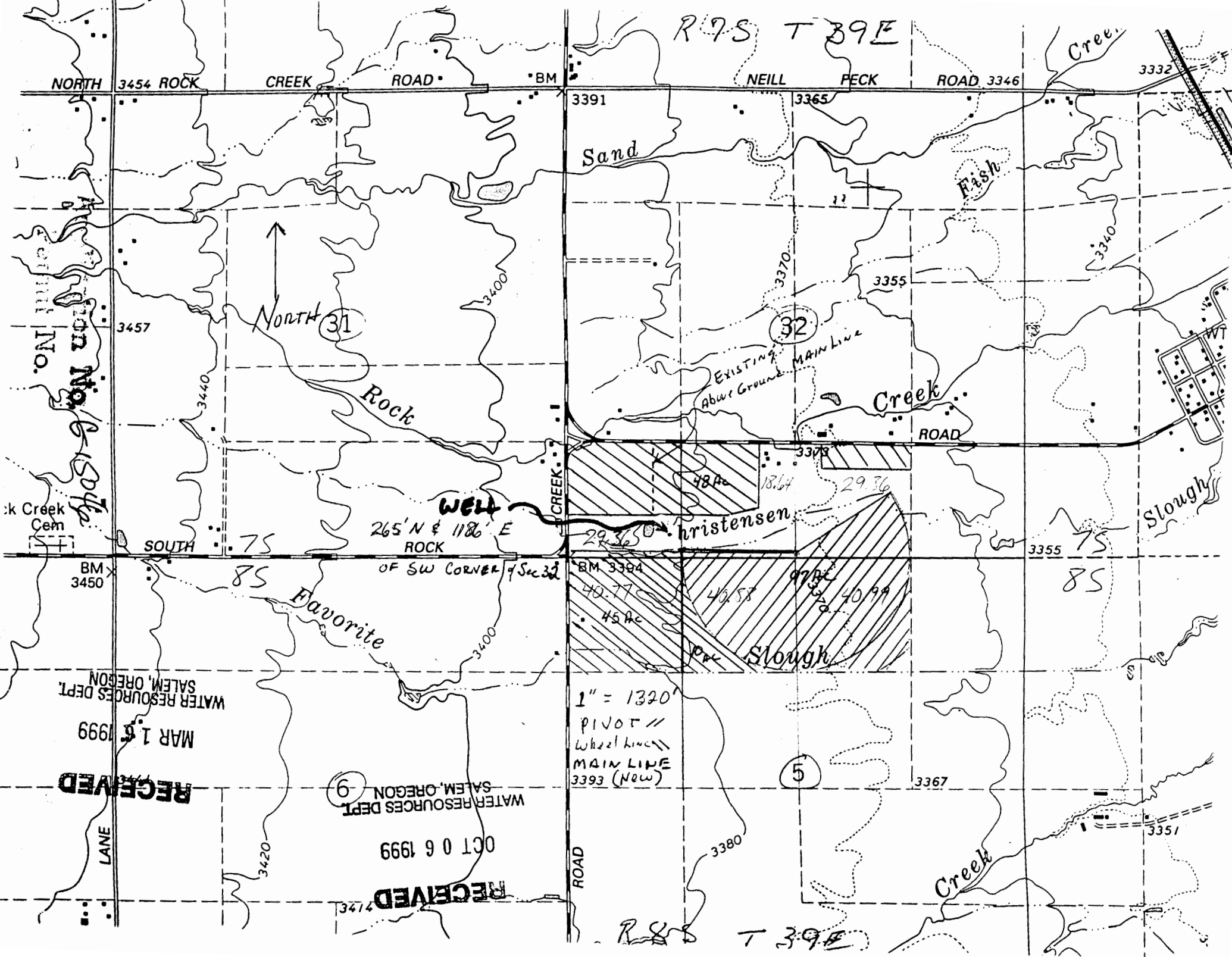
Creek

3351

R8S T39E

335

R 9 S T 39 E



NORTH 3454 ROCK CREEK ROAD • BM NEILL PECK ROAD 3346 3332

3391

3365

Sand

Fish

3457

North 31

3400

3370

3355

3340

Section No. 31 & 32

Rock Creek Cem

SOUTH 75

WELL 265° N & 1186' E ROCK OF SW CORNER of Sec 32

Christensen

48 AC

18.64

29.36

3355

BM 3450

85

Favorite

3400

BM 3394

40.77

40.58

40.99

85

WATER RESOURCES DEPT. SALEM, OREGON

MAR 15 1999

RECEIVED

LANE

WATER RESOURCES DEPT. SALEM, OREGON

OCT 06 1999

RECEIVED

1" = 1320'
PIVOT //
Wheel line
MAIN LINE
3393 (Now)

5

3367

ROAD

3380

Creek

1531

R 9 S T 39 E

Ed Hayhurst
application G15046

UNITED STATES
DEPARTMENT OF THE INTERIOR
GEOLOGICAL SURVEY

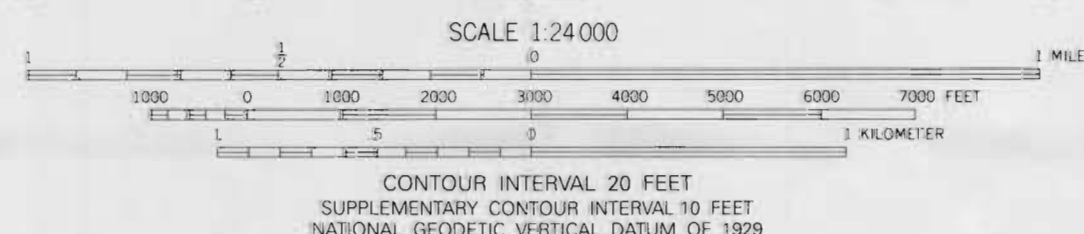
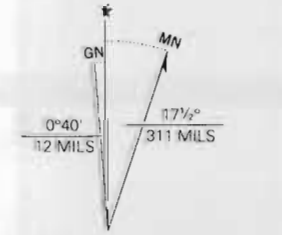
HAINES QUADRANGLE
OREGON
7.5 MINUTE SERIES (TOPOGRAPHIC)



Produced by the United States Geological Survey
Control by USGS and NOS/NOAA
Compiled from aerial photographs taken 1966. Revised from aerial
photographs taken 1988 and other sources. Field checked 1993
Map edited 1994

North American Datum of 1927 (NAD 27). Projection and
10,000-foot ticks: Oregon Coordinate System, north zone
(Lambert Conformal Conic)
Blue 1000-meter Universal Transverse Mercator ticks, zone 11
North American Datum of 1983 (NAD 83) is shown by dashed
corner ticks. The values of the shift between NAD 27 and NAD 83
for 7.5-minute intersections are obtainable from National Geographic
Survey NADCON software

Fine red dashed lines indicate selected fence and field lines where
generally visible on aerial photographs. This information is unchecked



ROAD CLASSIFICATION

| | |
|---------------------------------|---|
| Primary highway, hard surface | Light duty road, hard or improved surface |
| Secondary highway, hard surface | Unimproved road |

Legend for route types: Interstate Route, U.S. Route, State Route



THIS MAP COMPLIES WITH NATIONAL MAP ACCURACY STANDARDS
FOR SALE BY U.S. GEOLOGICAL SURVEY
DENVER, COLORADO 80225, OR RESTON, VIRGINIA 22092
A FOLDER DESCRIBING TOPOGRAPHIC MAPS AND SYMBOLS IS AVAILABLE ON REQUEST

HAINES, OR
44117-HB-TF-024

1994
DMA 2473 IV NW-SERIES V892

RECEIVED
AUG 08 2000
WATER RESOURCES DEPT.
SALEM, OREGON