

SECTION 18 T.39S. R.09E. W.M.  
 KLAMATH COUNTY

39 09 18

Page 1 of 2

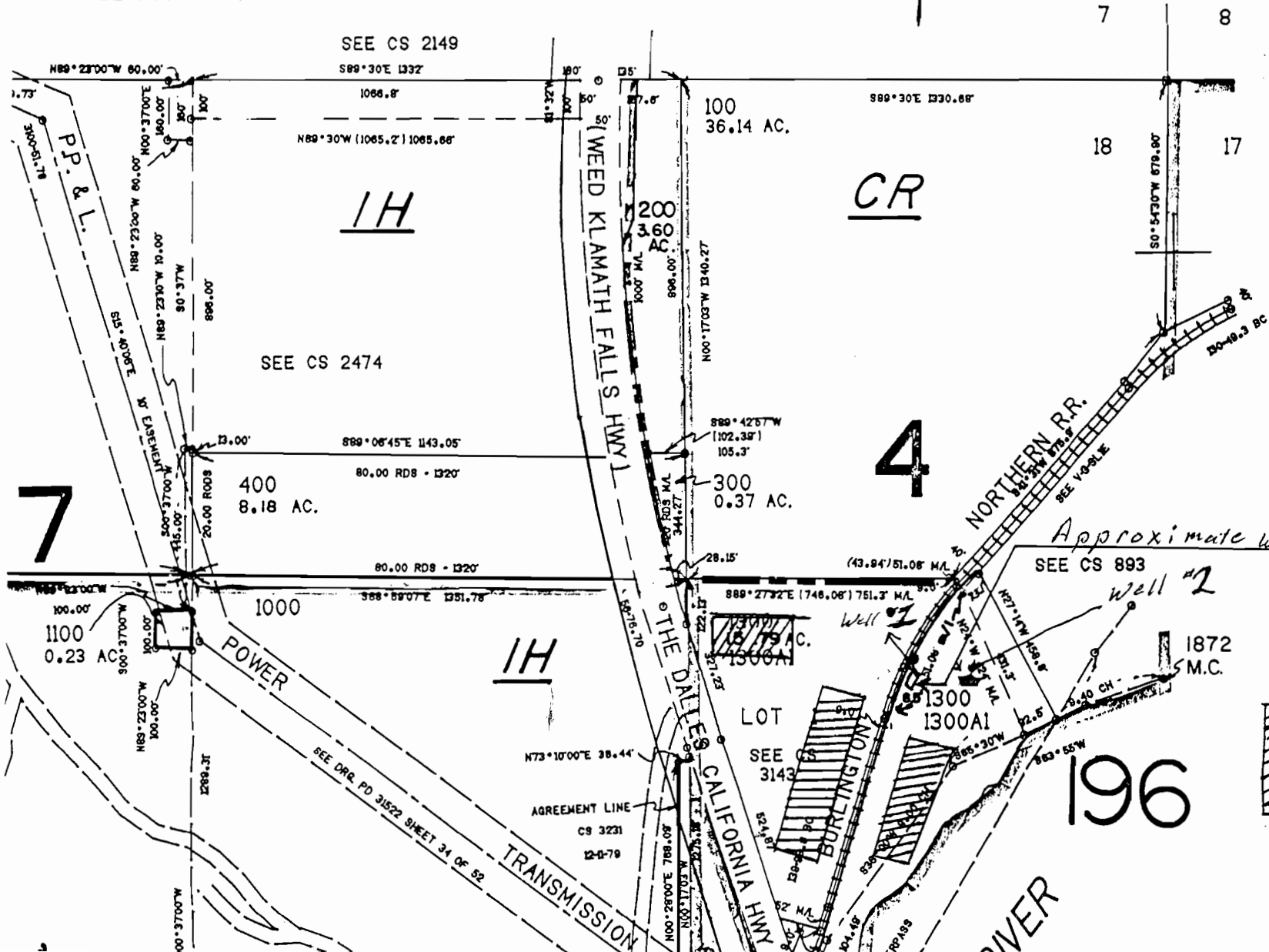
1"=400'

SEE MAP 39 09 07

**RECEIVED**

DEC 29 2000

WATER RESOURCES DEPT  
 SALEM, OREGON



CANCELLED NO'S

- 500
- 600
- 700
- 1400
- 900

*Approximate well locations*

SEE CS 893

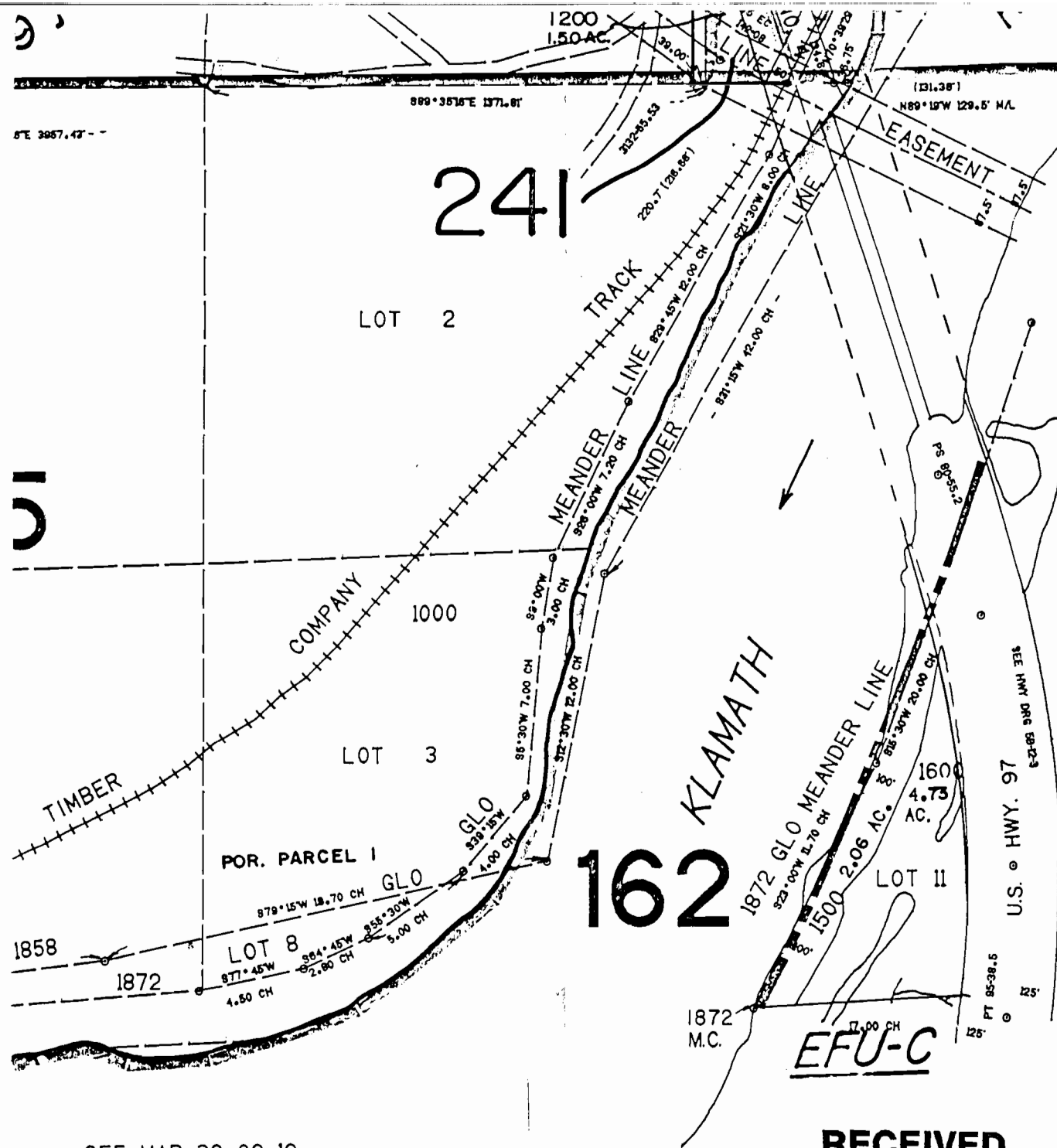
Well #1

Well #2

*Represents  
 approximate  
 points of use*

9 17

SEE MAP 39



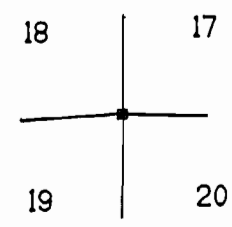
\* From N.E. corner of Section 18, T39S, R9EWM, Well #1 is South 1550 feet West 670 feet  
 Well #2 is South 1505 feet West 515 feet

**RECEIVED**

DEC 29 2000

WATER RESOURCES DEPT  
SALEM, OREGON 187.000

Application No. G15196  
 Permit No.



**RECEIVED**

AUG 14 2000

WATER RESOURCES DEPT.  
SALEM, OREGON

SEE MAP 39 09 19

**RECEIVED**

JUL 27 2000

39 09 18