

FOR ONLY

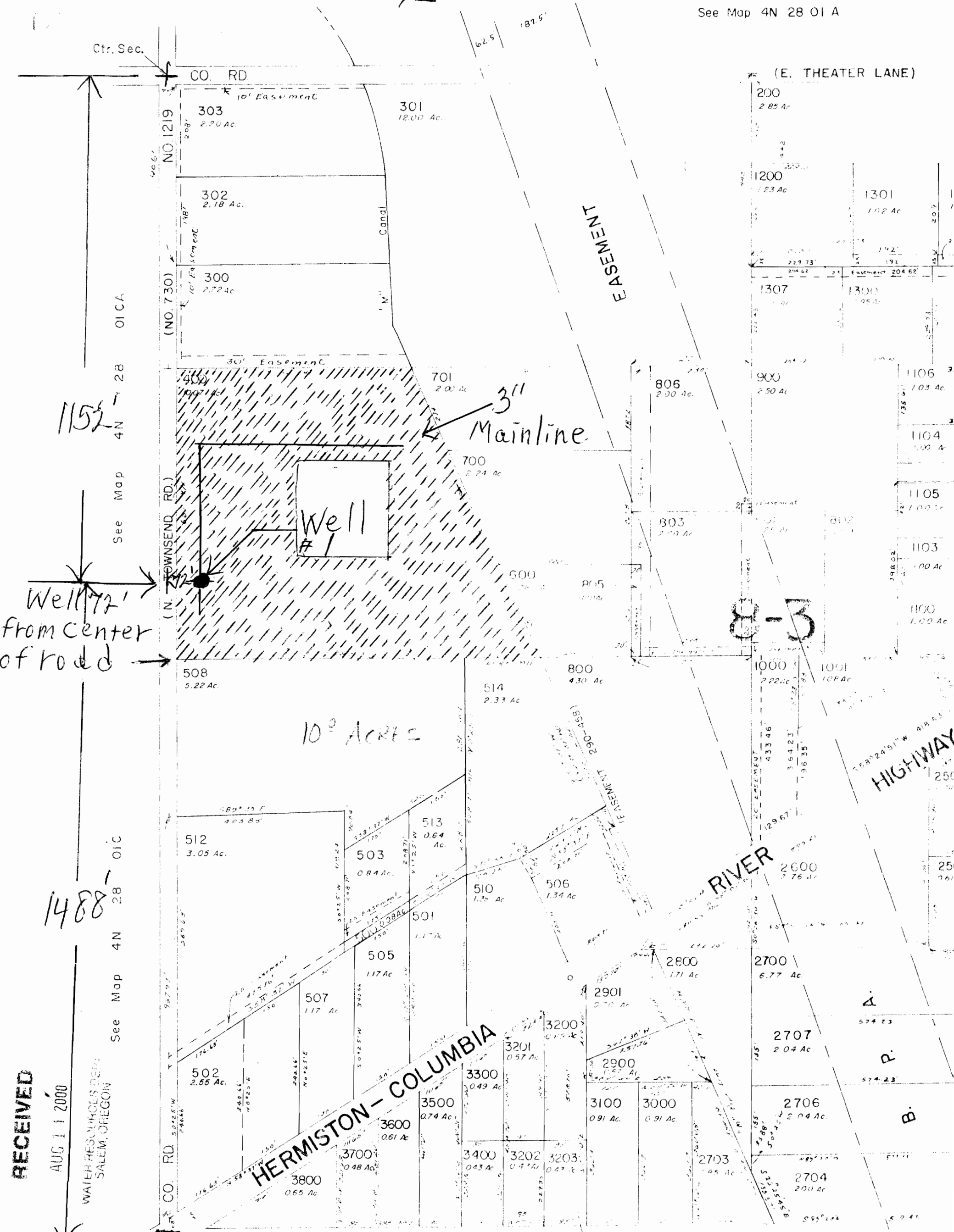
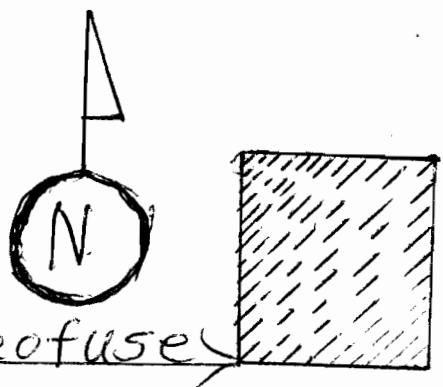
SE1/4 Sec. 1 T.4N. R.28E.W.M.
UMATILLA COUNTY

1"=200'

Application No. 915275
Permit No.

See Map 4N 28 01 A

Proposed place of use
Section Corner



RECEIVED
AUG 14 2000
WATER RESOURCES DEPT
SALEM, OREGON

1152
Well 72' from center of road

1488
See Map 4N 28 01 C

HERMISTON - COLUMBIA

8-3

HIGHWAY

RIVER

Ctr. Sec.

CO. RD

NO 1219

(NO. 730)

(N. 742)

CO. RD

NO 1219

(NO. 730)

(N. 742)

CO. RD

303
2.20 Ac.

302
2.18 Ac.

300
2.72 Ac.

508
5.22 Ac.

512
3.05 Ac.

507
1.17 Ac.

502
2.55 Ac.

301
12.00 Ac.

400
10.07 Ac.

401
10.07 Ac.

503
0.84 Ac.

505
1.17 Ac.

506
1.34 Ac.

504
10.07 Ac.

701
2.00 Ac.

700
2.24 Ac.

513
0.64 Ac.

510
1.34 Ac.

514
2.33 Ac.

511
1.17 Ac.

806
2.00 Ac.

803
2.00 Ac.

800
4.30 Ac.

800
4.30 Ac.

800
4.30 Ac.

800
4.30 Ac.

800
4.30 Ac.

900
2.50 Ac.

900
2.50 Ac.

1000
2.22 Ac.

1001
1.08 Ac.

1000
2.22 Ac.

1000
2.22 Ac.

1000
2.22 Ac.

1106
1.03 Ac.

1104
1.02 Ac.

1105
1.03 Ac.

1103
1.00 Ac.

1100
1.00 Ac.

1100
1.00 Ac.

1100
1.00 Ac.

1100
1.00 Ac.

1100
1.00 Ac.

1100
1.00 Ac.

1200
1.23 Ac.

1307
1.00 Ac.

1300
1.05 Ac.

1300
1.05 Ac.

1300
1.05 Ac.

1300
1.05 Ac.

1300
1.05 Ac.

1301
1.02 Ac.

1300
1.02 Ac.

1300
1.02 Ac.

1300
1.02 Ac.

1300
1.02 Ac.

1300
1.02 Ac.

1300
1.02 Ac.

200
2.85 Ac.

200
2.85 Ac.

200
2.85 Ac.

200
2.85 Ac.

200
2.85 Ac.

200
2.85 Ac.

200
2.85 Ac.

1200
1.23 Ac.

1307
1.00 Ac.

1300
1.05 Ac.

1300
1.05 Ac.

1300
1.05 Ac.

1300
1.05 Ac.

1300
1.05 Ac.

1301
1.02 Ac.

1300
1.02 Ac.

1300
1.02 Ac.

1300
1.02 Ac.

1300
1.02 Ac.

1300
1.02 Ac.

1300
1.02 Ac.

200
2.85 Ac.

200
2.85 Ac.

200
2.85 Ac.

200
2.85 Ac.

200
2.85 Ac.

200
2.85 Ac.

200
2.85 Ac.

1200
1.23 Ac.

1307
1.00 Ac.

1300
1.05 Ac.

1300
1.05 Ac.

1300
1.05 Ac.

1300
1.05 Ac.

1300
1.05 Ac.

See Map 4N 28 01 C

See Map 4N 28 01 C

See Map 4N 28 01 A

See Map 4N 28 01 A