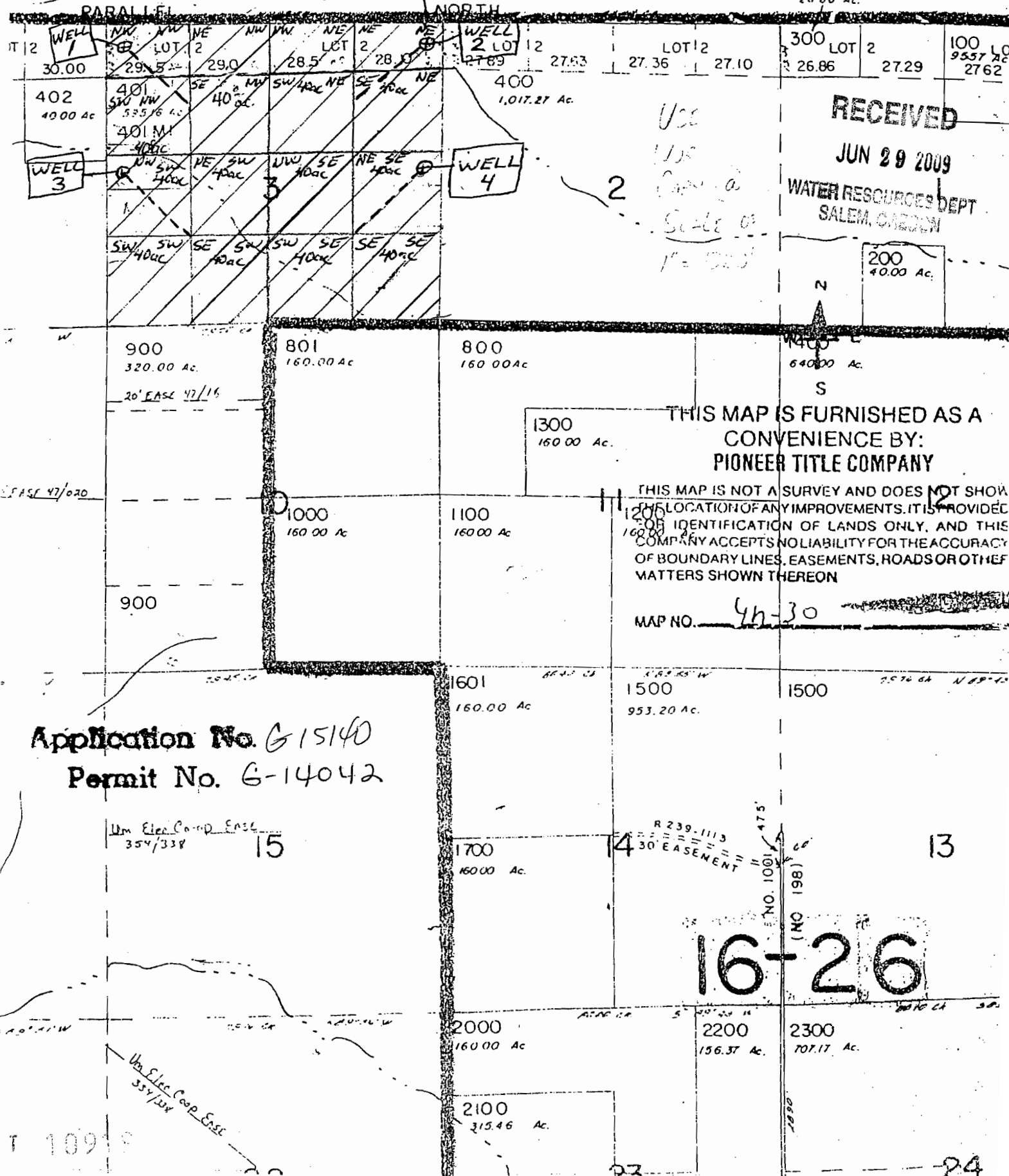


4 N. R. 30 E. W. M  $\oplus$  WELL LOCATION - Proposed  
 1. 150'S and 50' E. of SW 1/4 corner of sec 3 4N30E  
 2. 150'S and 50' W of NE 1/4 corner of sec 3 4N30E  
 3. 250'S and 50' E of NW 1/4 corner of sec 3 4N30E  
 4. 250'S and 50' W of NE 1/4 corner of sec 3 4N30E

RECEIVED  
 G-1404  
 APR - 7 2000  
 Aerial Photo  
 WATER RESOURCES DEPT.  
 SALEM, OREGON  
 26.86 Ac.

1" = 2000'



RECEIVED

JUN 29 2009

WATER RESOURCES DEPT.  
 SALEM, OREGON

USE  
 USE  
 Scale of  
 1" = 2000'

THIS MAP IS FURNISHED AS A  
 CONVENIENCE BY:  
 PIONEER TITLE COMPANY

THIS MAP IS NOT A SURVEY AND DOES NOT SHOW  
 THE LOCATION OF ANY IMPROVEMENTS. IT IS PROVIDED  
 FOR IDENTIFICATION OF LANDS ONLY, AND THIS  
 COMPANY ACCEPTS NO LIABILITY FOR THE ACCURACY  
 OF BOUNDARY LINES, EASEMENTS, ROADS OR OTHER  
 MATTERS SHOWN THEREON

MAP NO. 4h-30

Application No. G15140  
 Permit No. G-14042

Upr Elec. Corp. EASE  
 354/338 15

R 239-1113  
 30' EASEMENT  
 NO. 1001  
 (NO 198) 60

16-26

Upr Elec. Corp. EASE  
 354/338

T 10918

24