

36, T.1N., R.1W., W.M.
 AND
 1, T.1S., R.1W., W.M.

RECEIVED

APR 29 1998

WATER RESOURCES DEPT.
 SALEM, OREGON



SCALE: 1" = 200'

MAP BASE:
 ASSESSORS MAP
 1996 SCALED PHOTO

SE/4 SW/4
 Sec 36, T.1N., R.1W.
 3.8 Ac

S.W. 1/4, S.E. 1/4
 SEC. 36, T.1N., R.1W.
 9.7 Ac.

T.L. 84

9.7 Ac.

3.8 Ac.

T.L. 12

B

T.L. 200

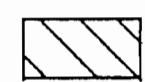
T.L. 100

MULTNOMAH CO.
 T.1N.
 T.1S.
 WASHINGTON CO.

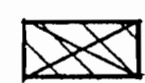
T.L. 600

3.1 Ac.

7.2 Ac.



FIELD GROWN
 OR CONTAINERS



GREEN HOUSE
 OR TUBE HOUSE

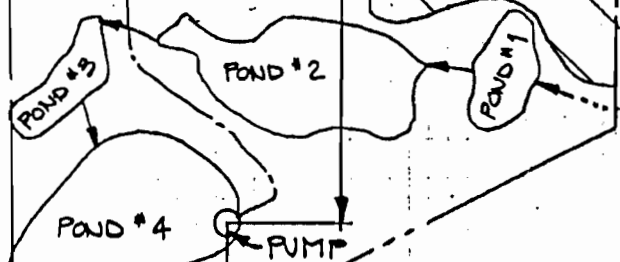


BUILDING

PRIMARY
 (GROUNDWATER)
 & SUPPLEMENTAL
 (SURFACE WATER &
 RESERVOIR) FOR
 IRRIGATION &
 AGRICULTURAL
 USE.

NE/4 NW/4
 Sec 1, T.1S., R.1W.
 3.1 Ac

NW/4 NE/4
 SEC 1, T.1S., R.1W.
 7.2 Ac



PUMP

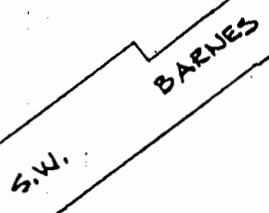
POND #3

POND #2

POND #1

POND #4

225'



N.W. CORNELL ROAD

WELL SITE MAP

T.L. 175
 WELL #17

550'

655'

N.W. MILLER ROAD

S.W. 1/4 OF N.W. 1/4

TEUFEL HOLLY
 FARMS INC.

WEST 1/4 CORNER
 SECTION 36 T.1N., R.1W.

