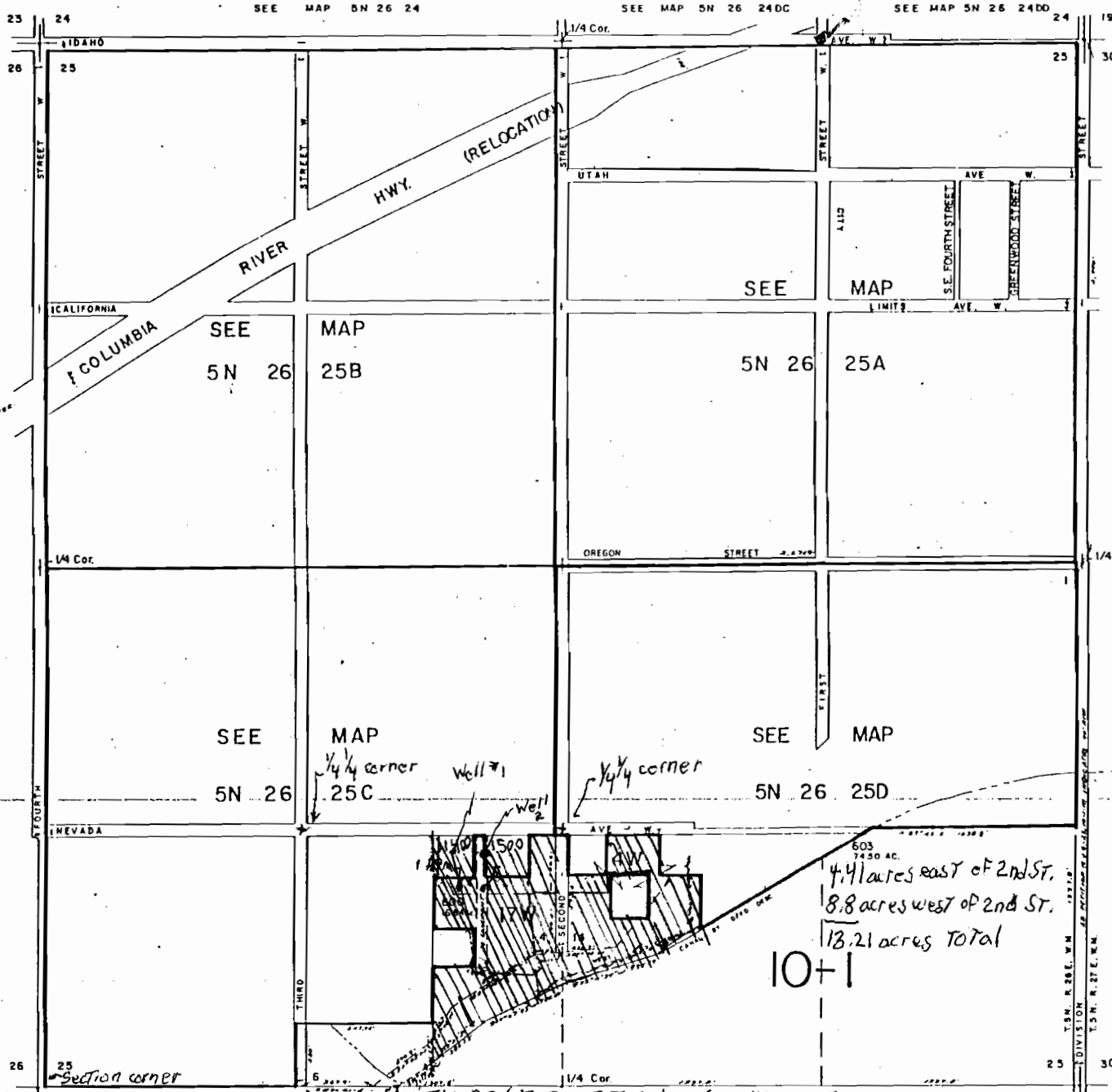


SCALE 1:9600



CANCELLED NO'S  
601  
602  
603  
609  
100 THRU 500  
604 THRU 610

RECEIVED  
SEP 25 2000

WATER RESOURCES  
SALEM, OREGON

MAY 1994  
Morrow County  
Assessor's Office

RECEIVED  
APR 27 1994  
DEPT. OF REVENUE STATE OF OREGON  
ASSESSMENT & APPRAISAL DIV.

Application No. 415220  
Permit No.

T5N R26E Sec 25 Tax Lots 600, 1400, 1500  
SE 1/4 SW 1/4, S 1/2 SE 1/4 with exceptions.

10+1

4.11 acres east of 2nd ST.  
8.8 acres west of 2nd ST.  
13.21 acres Total

SEE MAP 5N 27 30

T.5N. R.26E. W.M.  
DIVISION R.27E. W.M.