

RECEIVED

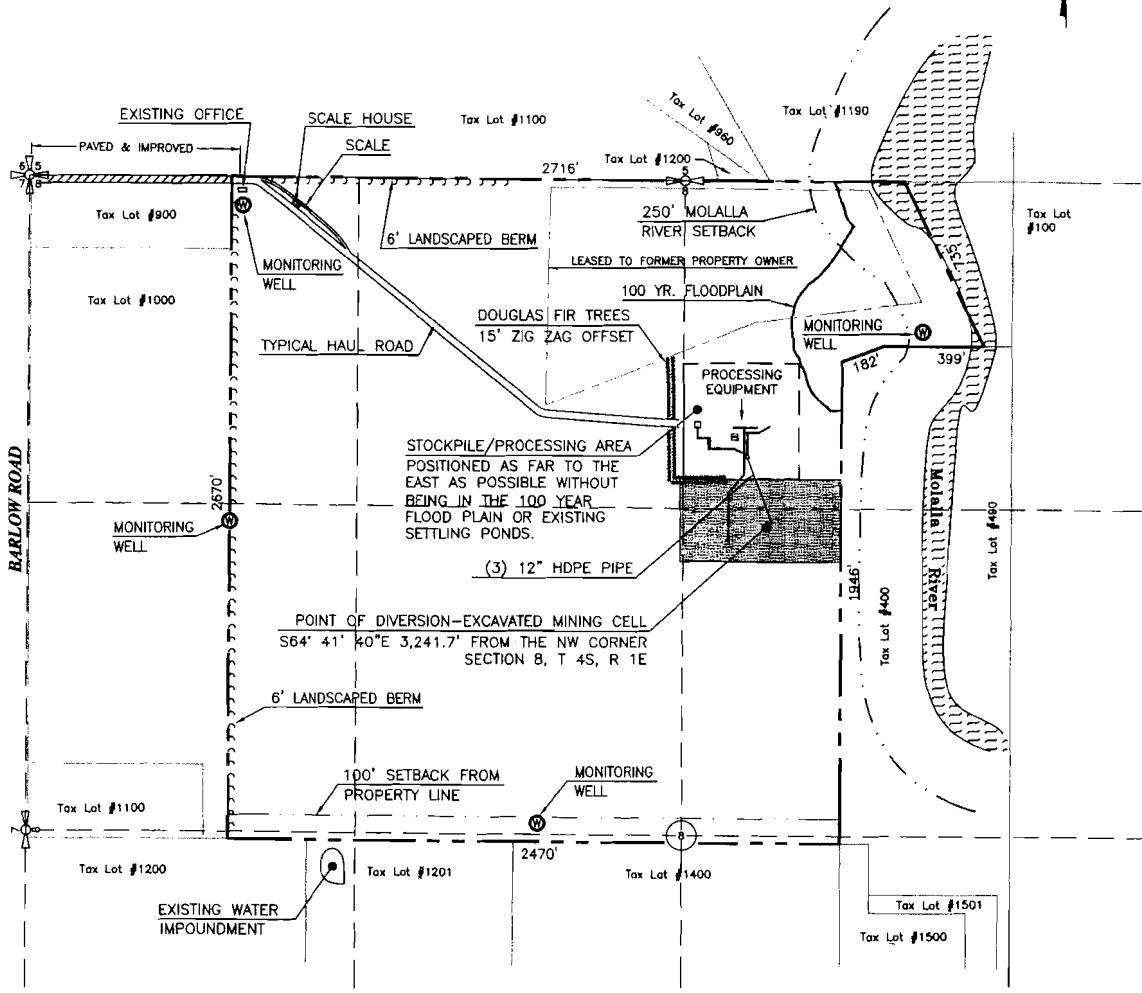
JUN 30 2000

WATER RESOURCES DEPT.  
SALEM, OREGON

*AMENDED*

**LEGEND**

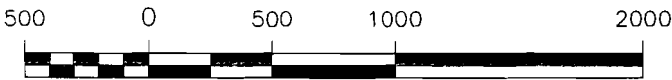
- SETBACK LINE
- - - 20 YEAR LEASE LINE
- PROPERTY BOUNDARY



**SITE PLAN**

Application No. 915176  
Permit No.

Graphic Scale



1 inch = 500 feet

SCALE	1" = 500'
DATE	06-06-2000
FILE	d:\...\Canby Site Plan.dwg
REV. NO.	0
DESIGN	S. MARSH
CAD	S. MARSH
SHEET	02 OF 02
DRAWING NO.	<b>C1</b>

**PACIFIC ROCK PRODUCTS, LLC**  
 8705 N.E. 117th Ave. Vancouver, WA 98662  
 (360) 254-7770

*Canby/Barlow Aggregate Facility*  
*Canby, Oregon*  
 Water Rights Location Map