

THIS MAP WAS PREPARED FOR ASSESSMENT PURPOSE ONLY

SECTION 4 .24S. R.32E. W.M. HARNEY COUNTY
1" = 400'

24 3 14



SCALE 1:9600



SEE MAP 23 32

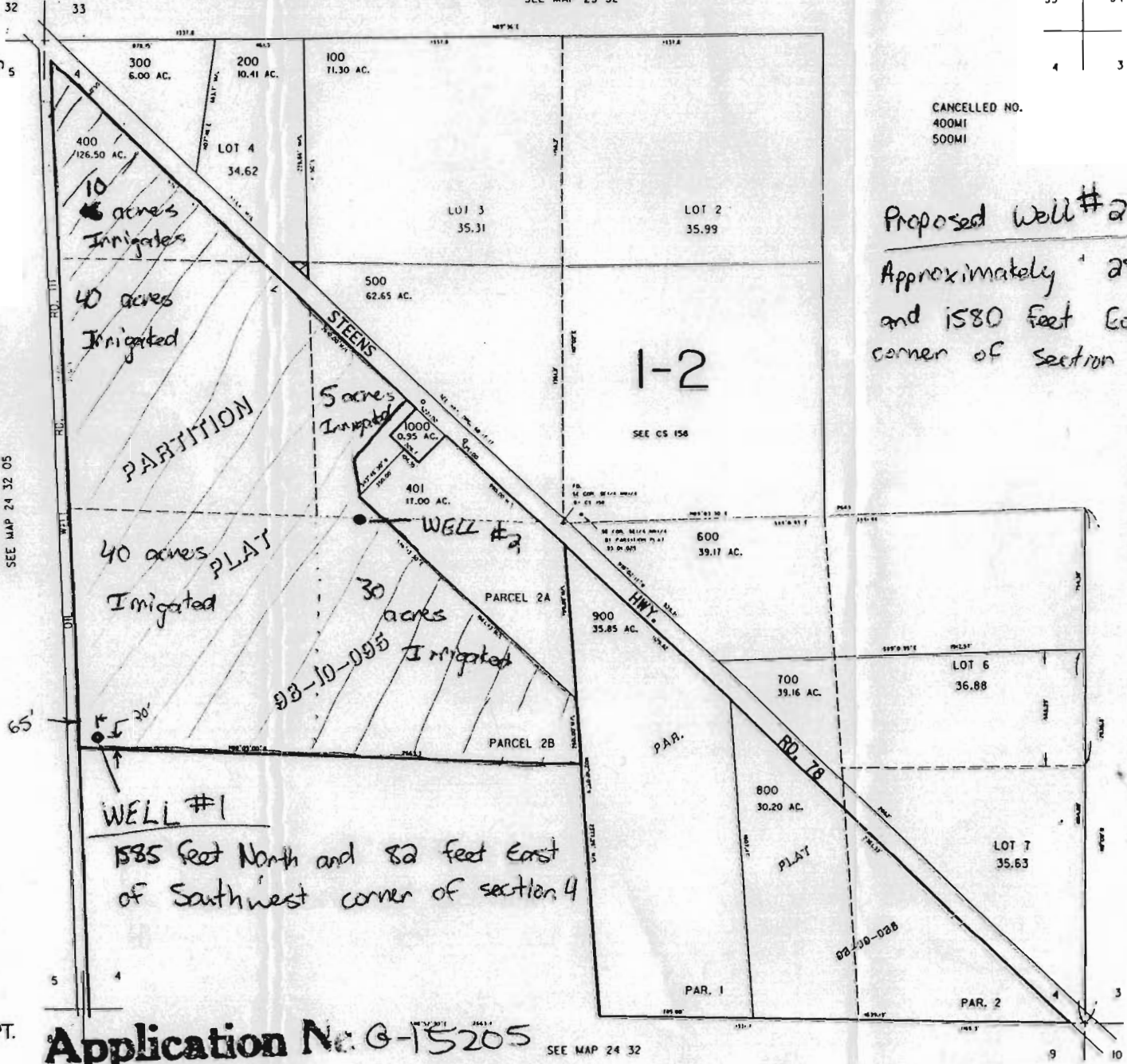


TAX LOT: 400
125 Acres

CANCELLED NO.
400M
500M

Proposed Well #2 Located
Approximately 2835 feet North
and 1580 feet East of Southwest
corner of Section 4

AMENDED
MAP



SEE MAP 24 32 05

SEE MAP 24 32 03

WELL #1
1585 feet North and 82 feet East
of Southwest corner of section 4

RECEIVED

AUG 25 2000

WATER RESOURCES DEPT.
SALEM, OREGON

RECEIVED

AUG 07 2000

WATER RESOURCES DEPT.
SALEM, OREGON

Application No: G-15205
Permit No.

SEE MAP 24 32

JAN 08 1999

24 32 04