

G-15656 915067

THIS MAP WAS PREPARED FOR ASSESSMENT PURPOSE ONLY

GARRE FARMS
12532 NE ROSE PARKWAY
PORTLAND, OR 97230

ALBERT J GARRE
12532 NE ROSE PKY
PORTLAND, OR 97230
503/254-8347

138 FT TO 1/16 CORNER
WELL E
1,182 FT TO S 1/16 CORNER

SW 1/4 SW 1/4
TOTAL AC = 4.66
IRRIG AC = 4.66

GARRE FARMS
12532 NE ROSE PARKWAY
PORTLAND, OR 97230

Rev A 1/21/02
Per Request of
ORE WRD

GARRE FARMS
12532 NE ROSE PARKWAY
PORTLAND, OR 97230

BLK. 1, LOT 1 OF BLK. 2
OF BLK. 5, LOTS 1-9
OF BLK. 8, LOTS 1-4 OF
BLK. 7, LOTS 1-3 BLK. 8
& LOTS 1-9 BLK. 12

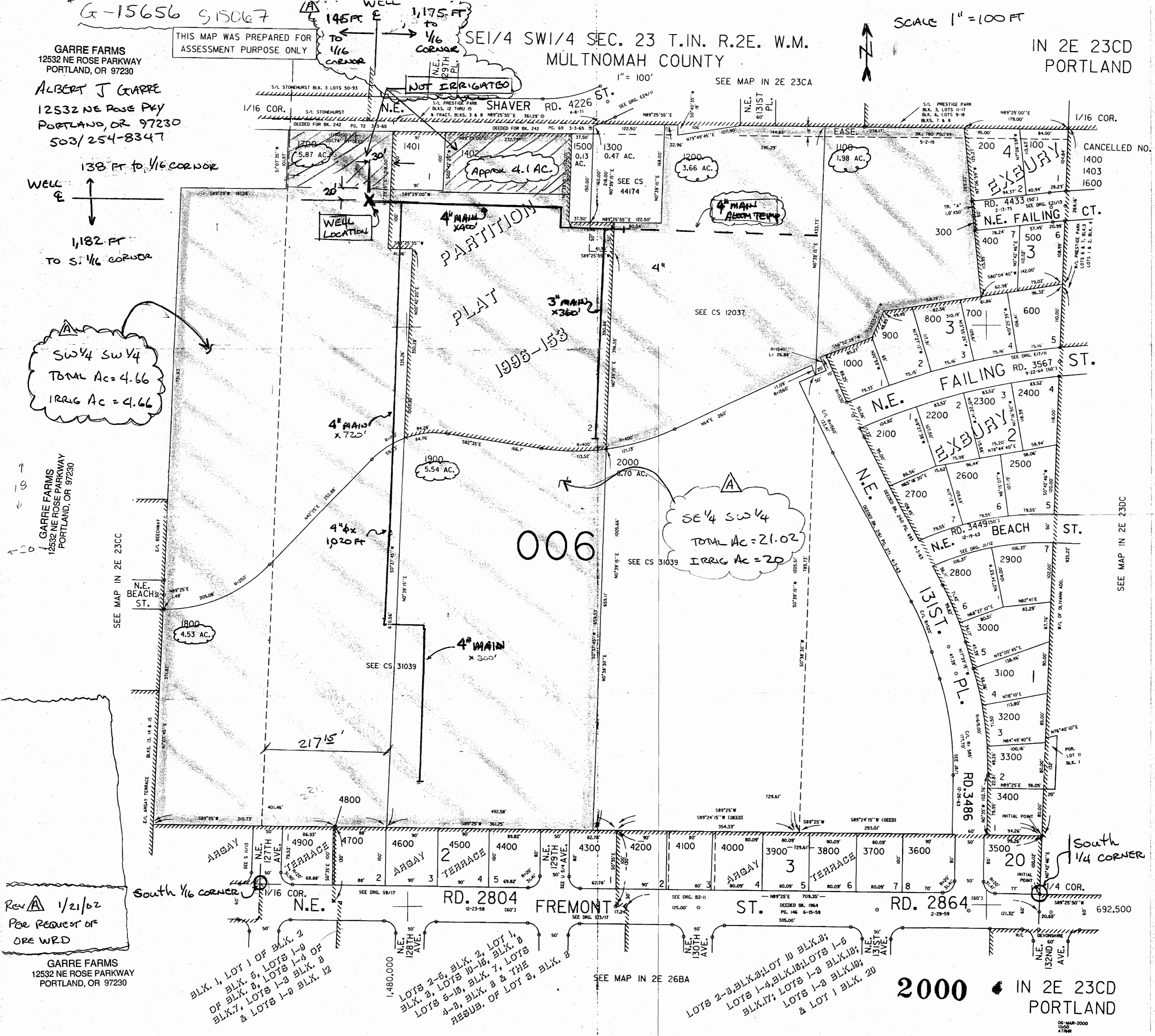
LOTS 2-5, BLK. 2, LOT 1,
BLK. 3, LOTS 10-15, BLK. 8
LOTS 5-15, BLK. 7, LOTS
4-8, BLK. 9 & THE
RESUB. OF LOT 3, BLK. 8

LOTS 2-3, BLK. 3, LOT 10 BLK. 3;
LOTS 1-4, BLK. 10; LOTS 1-5
BLK. 17; LOTS 1-3 BLK. 19;
& LOT 1 BLK. 20

SE 1/4 SW 1/4 SEC. 23 T.1N. R.2E. W.M.
MULTNOMAH COUNTY

SCALE 1" = 100 FT

IN 2E 23CD
PORTLAND



SEE MAP IN 2E 23CD

SEE MAP IN 2E 26BA

2000 IN 2E 23CD
PORTLAND

RECEIVED
JAN 23 2002

06-MAR-2000
10:50
ATRR

Actual quarter-quarter line

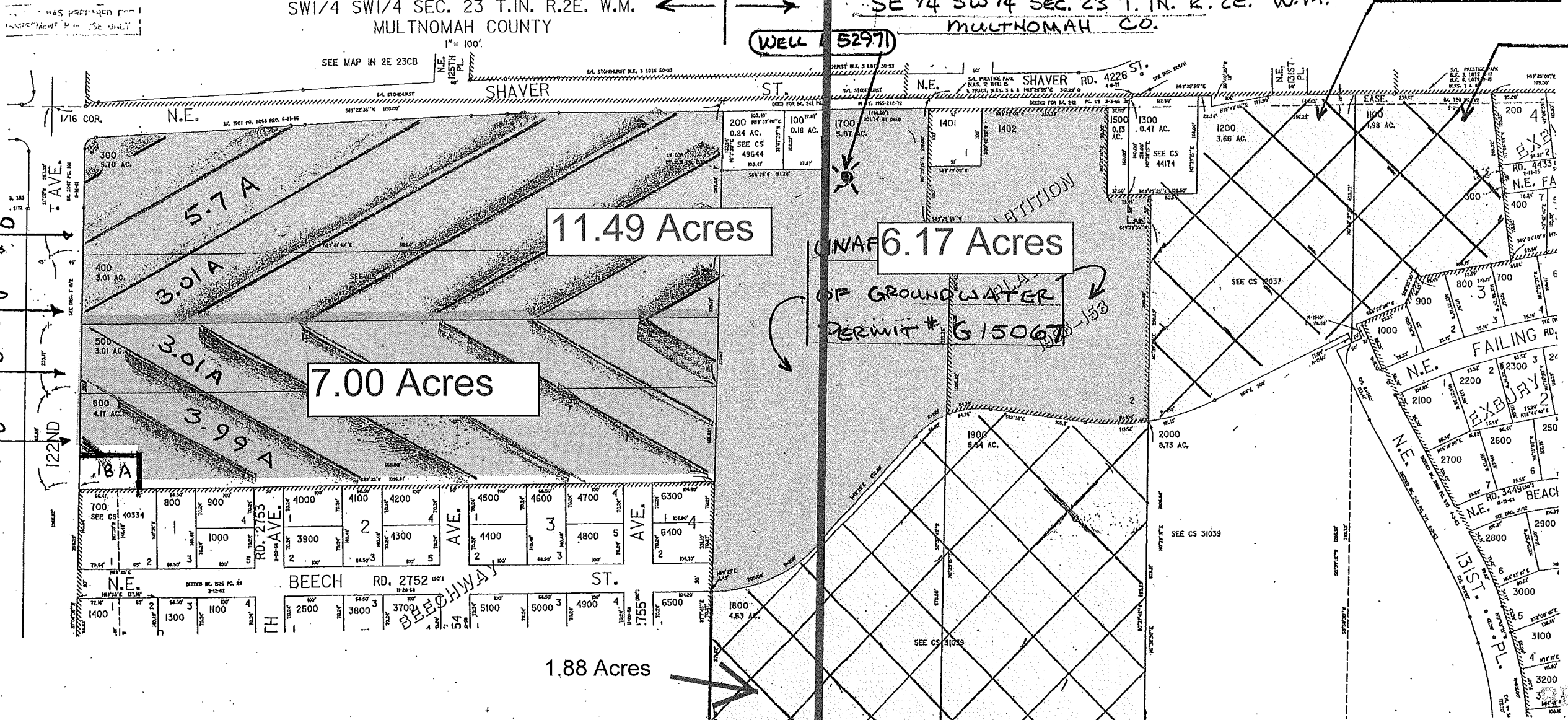
SW 1/4 SW 1/4 SEC. 23 T.1N. R.2E. W.M.
MULTNOMAH COUNTY

SE 1/4 SW 1/4 SEC. 23 T.1N. R.2E. W.M.
MULTNOMAH CO.

3.66 A
T.L. 1200
FROM LANDS
T.L. 1100
FROM LANDS
1.98 A

APPLICANT/PERMIT HOLDER
RENTS AND CONTROLS
APPLICANT/PERMIT HOLDER
DOES NOT CONTROL / OWN

T.L. 300
TO LANDS
T.L. 400
TO LANDS
T.L. 500
TO LANDS
T.L. 600
TO LANDS



LEGAND	
	FROM LAND
	TO LAND UNDER APPLICANT CONTROL
	TO LAND NOT UNDER APPLICANT CONTROL
	UNAFFECTED LANDS

T.L. 1800
FROM LANDS
4.53 A

T.L. 1900
FROM LANDS
5.54 A

IMPORTANT NOTE:
FOR "TO" LANDS TL 500 & TL 600
REFER TO REQUEST FOR ASSIGNMENT
FOR G15067 (1/21/10)

RECEIVED
JAN 25 2010
WATER RESOURCES DEPT
SALEM, OREGON

PERMIT AMENDMENT APPLICATION MAP	
APPLICANT: ALBERT GARRE	
GROUNDWATER PERMIT # G15067	
SCALE 1" = 210 FT	DATE: 1/21/2010
PURPOSE: TO SHOW CHANGE IN PLACE OF USE; "TO" LANDS & "FROM" LANDS	

T 111009