

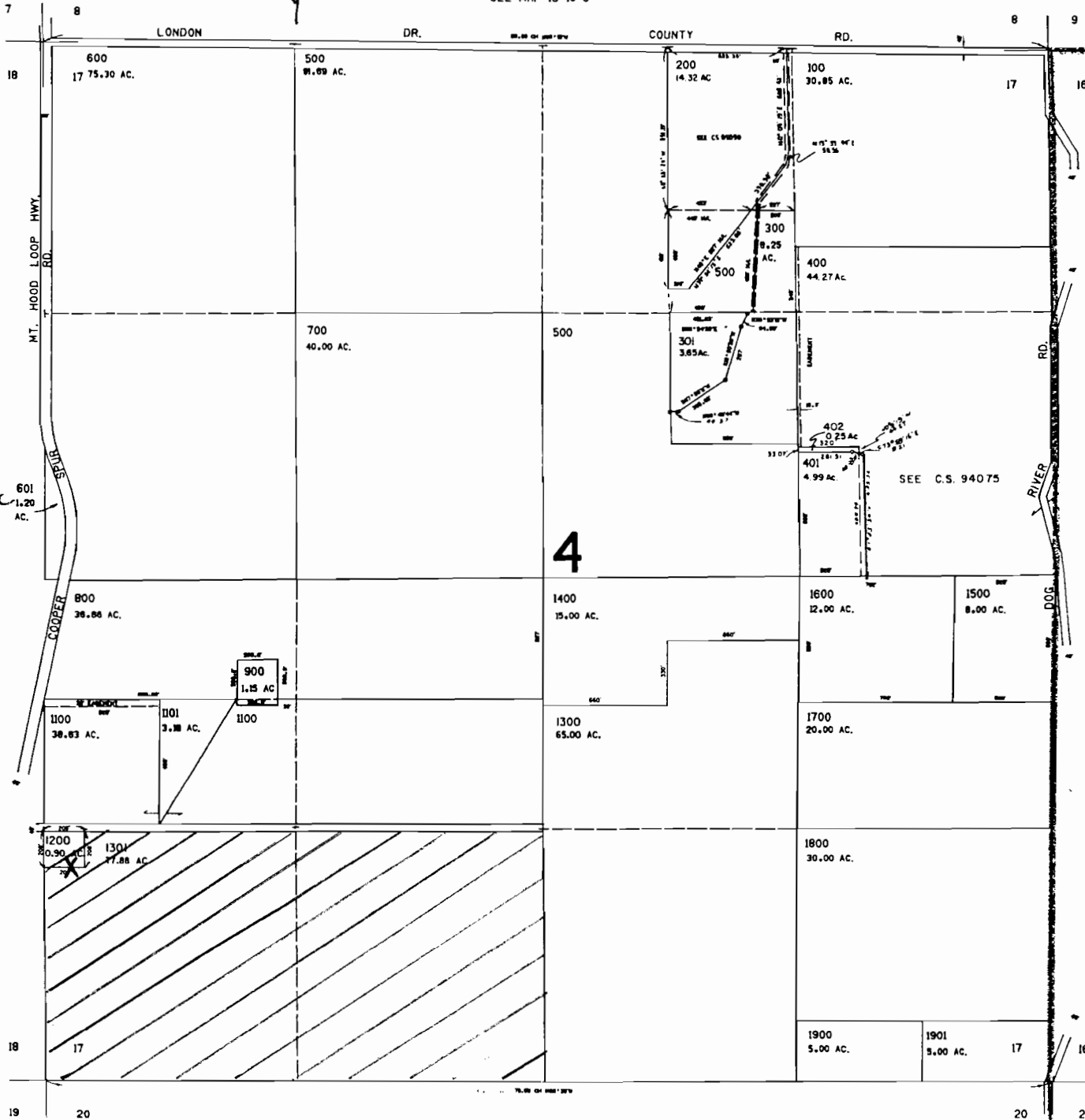
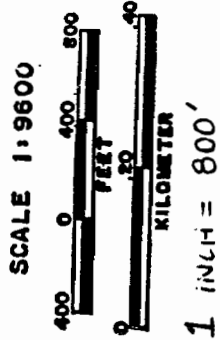
THIS MAP WAS PREPARED FOR
ASSESSMENT PURPOSE ONLY

SECTION 17 T.1S. R.10E. W.M.
HOOD RIVER COUNTY

1"=400'

SEE MAP IS 10 8

3 10 17



78.8 IRRIGATED AC.

WELL LOCATION; X
245 FT. SOUTH AND
167 FT. EAST OF THE
NW CORNER OF THE
SW QUARTER OF THE
SW QUARTER OF SEC
17 T.1S. R.10E

FEB 09 2000

MAINLINE LOCATION
HAS NOT BEEN
DETERMINED AT THIS
TIME

APP # 915322
PERMIT # 915073

SEE MAP IS 10

WATER RESOURCES DEPT.
SALEM, OREGON

JUN 14 2001

RECEIVED

15 10 17

SEE MAP IS 10 20

15 10 17