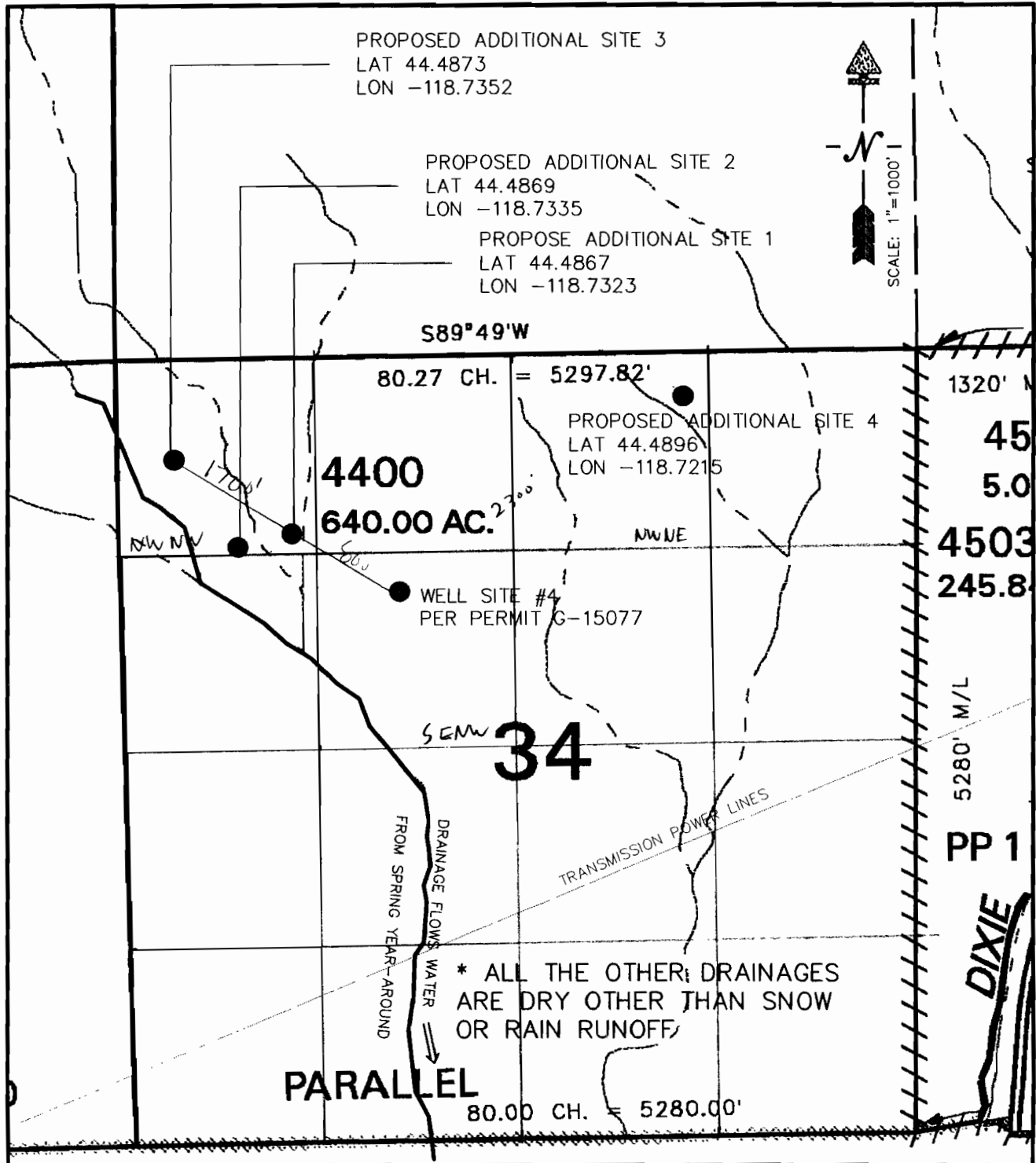


PROPOSED ADDITIONAL WELL SITES FOR PERMIT G-15077



RECEIVED
SEP 05 2006
WATER RESOURCES DEPT
SALEM, OREGON

ATTACHMENT 1
PORTION OF TAX MAP 12S33E
(SECTION 34)

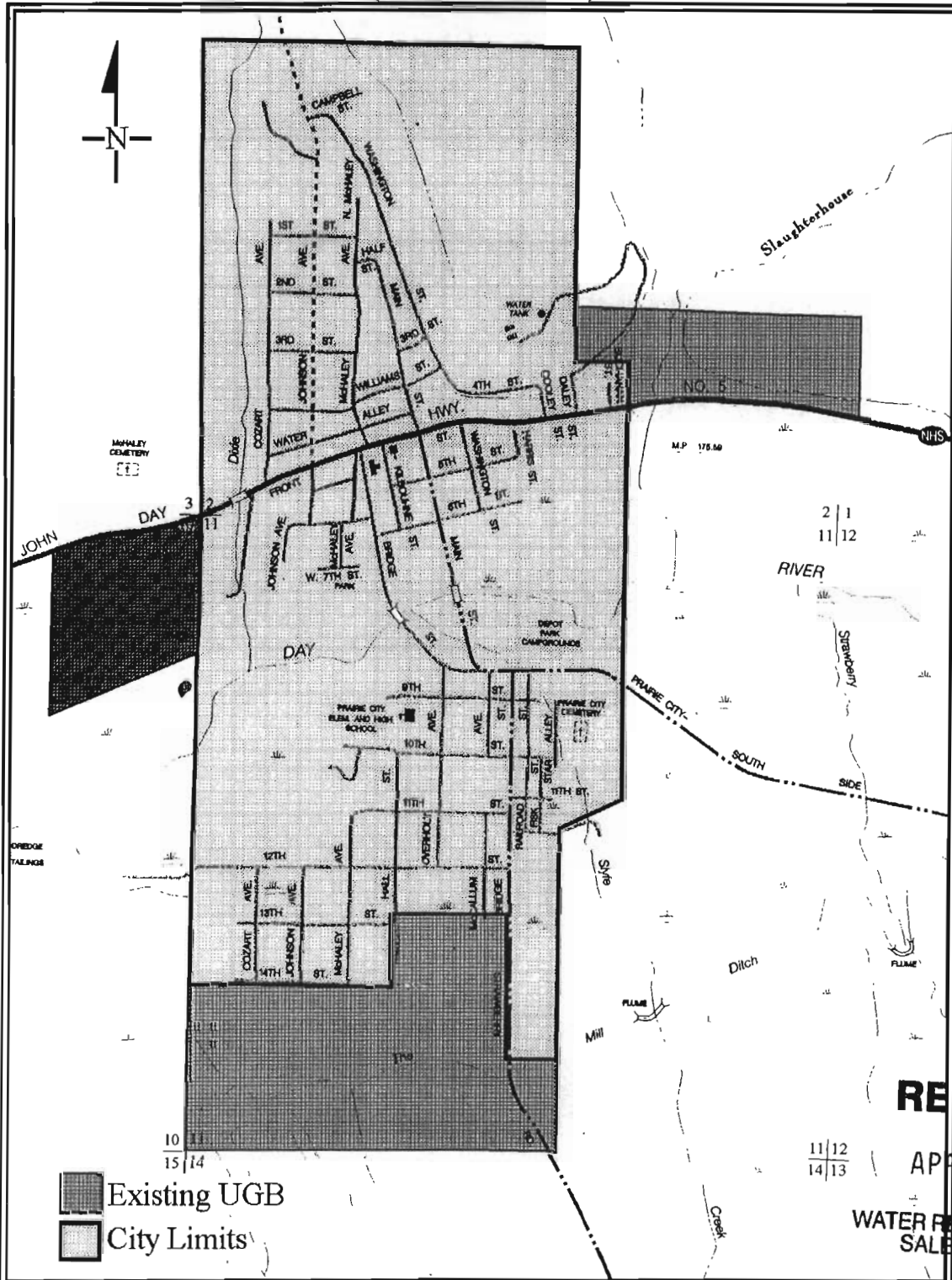
T 10237

RECEIVED
AUG 21 2006
WATER RESOURCES DEPT
SALEM, OREGON

WATER USE MAP - AREA OF USE

(scale: 4 inches = 1 mile)

Application No G15193
 Permit No.



The water use will be limited to the areas that are served by the City of Prairie City's Public Water System. Generally this is limited to properties within the City Limits with the potential to expand to serve areas within the Urban Growth Boundary (UGB).

The City is located in T13S R33E and the City Limits include portions of Sections 2 and 11, with the UGB extending into portions of Sections 1 and 10.