

File
Halousek

ION 21 T.41S. R.12E. W.M.
KLAMATH COUNTY

Application No. G-15455
Permit No.

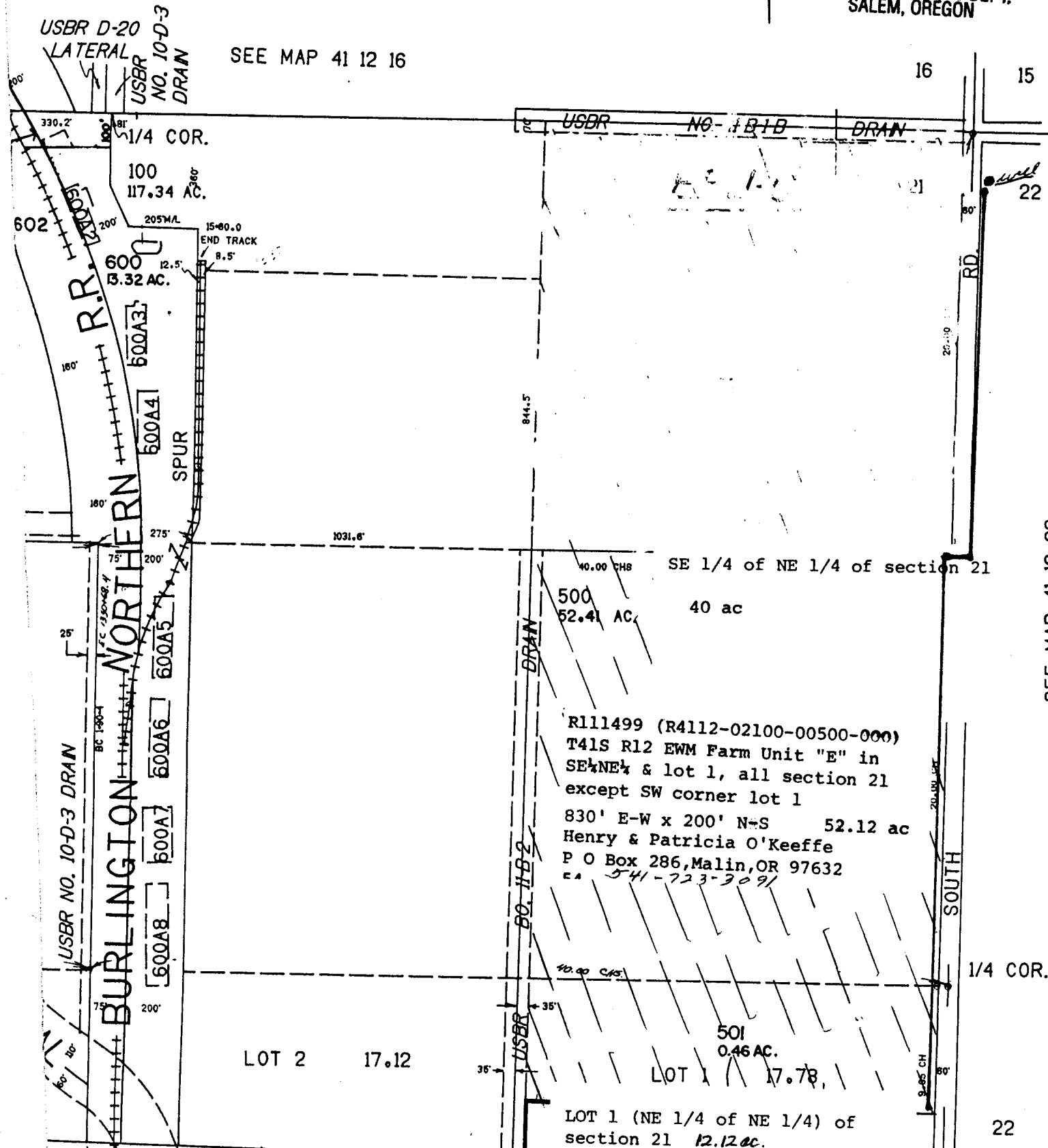
RECEIVED

DEC 20 2001

WATER RESOURCES DEPT.
SALEM, OREGON

1"-400'

SEE MAP 41 12 16



SEE MAP 41 12 22

22

16

RECEIVED

DEC 20 2001

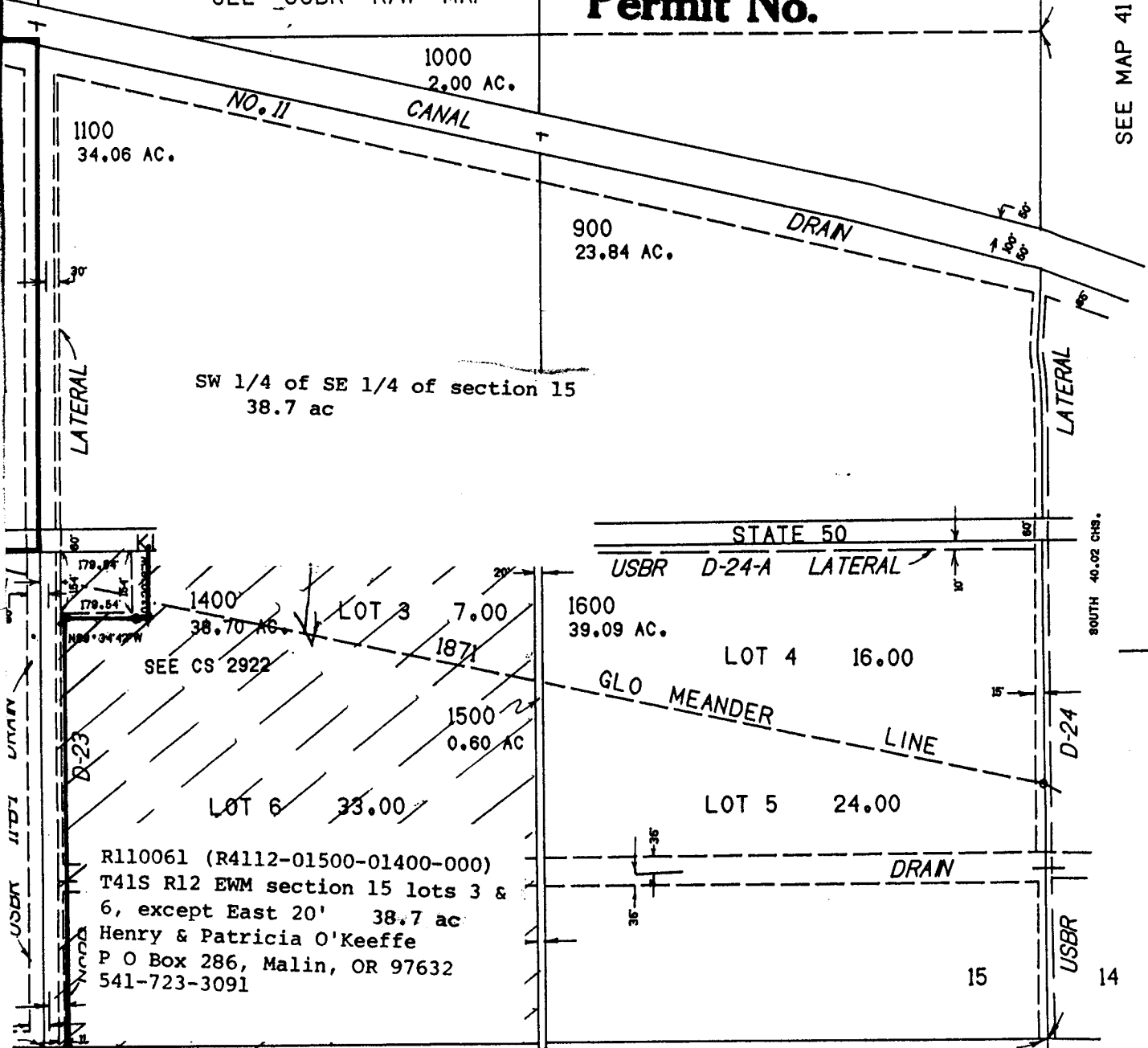
WATER RESOURCES DEPT.
SALEM, OREGON

Application No. G-15455
Permit No.

SEE USBR R/W MAP

RETRACEMENT

SEE MAP 41 12 14



R110061 (R4112-01500-01400-000)
 T41S R12 EWM section 15 lots 3 &
 6, except East 20' 38.7 ac
 Henry & Patricia O'Keeffe
 P O Box 286, Malin, OR 97632
 541-723-3091

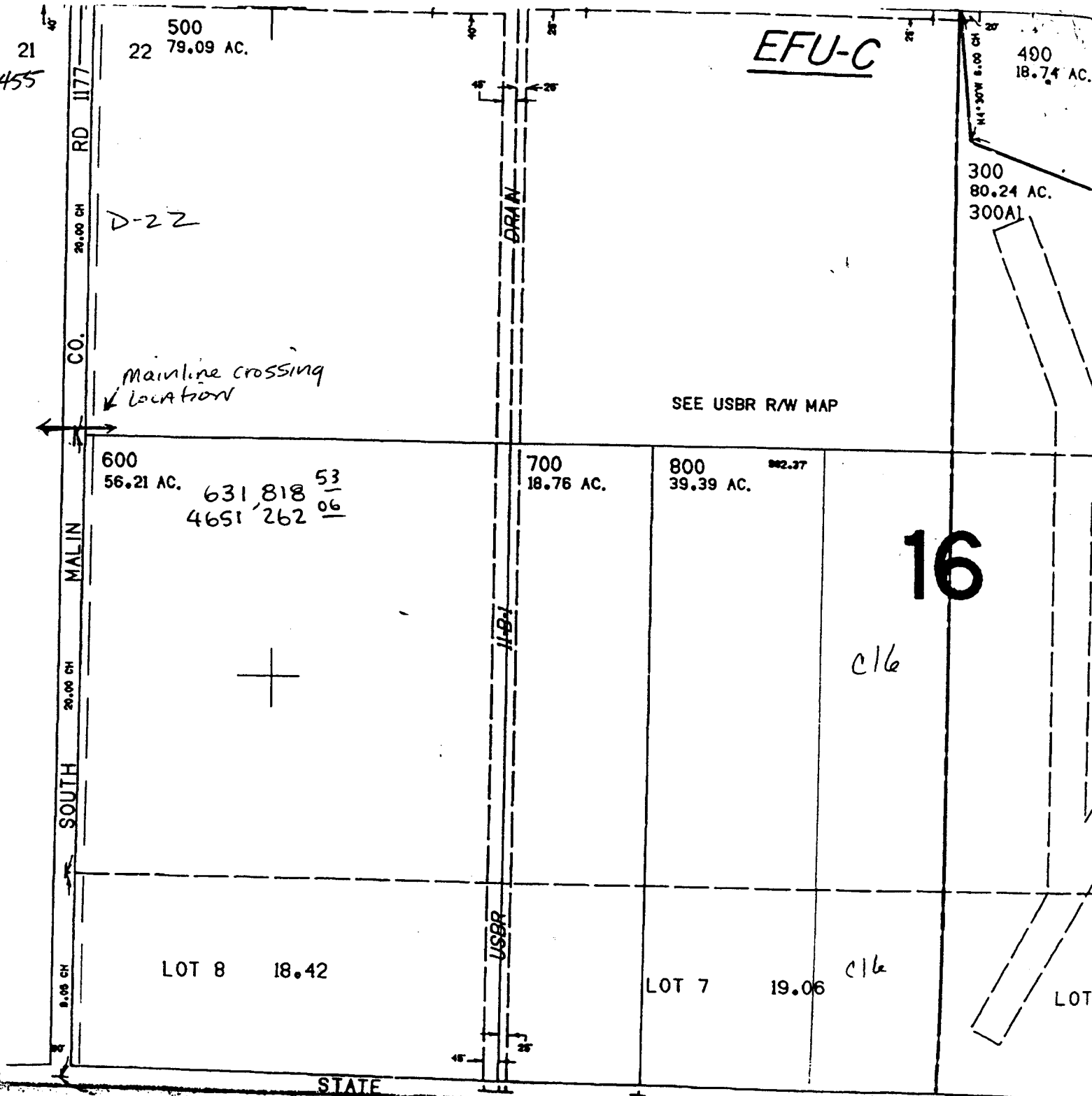
0. WEST RESURVEY
 IAD 41 12 22

Application No. G-15455
Permit No.

EFU-C

SEE MAP 41 12 21

SEE MAP 41 12 21DA



RECEIVED

DEC 2 0 2001

WATER RESOURCES DEPT.
SALEM, OREGON

EXHIBIT A

2052