

RECEIVED

JAN 29 2001

WATER RESOURCES DEPT
SALEM, OREGON



NE 1/4 SEC 27 T. 4 N. R. 29 E. W. 1/4

Well Located

120 feet North

100 feet East

FROM CENTER SECTION 7

NE 1/4 SEC 7 T. 4 N. R. 29 E. W. 1/4

11" = 200'

~~RR-2~~

NE 1/4 SEC 7 T. 4 N. R. 29 E. W. 1/4

11" = 200 Feet

8-3

RR-2

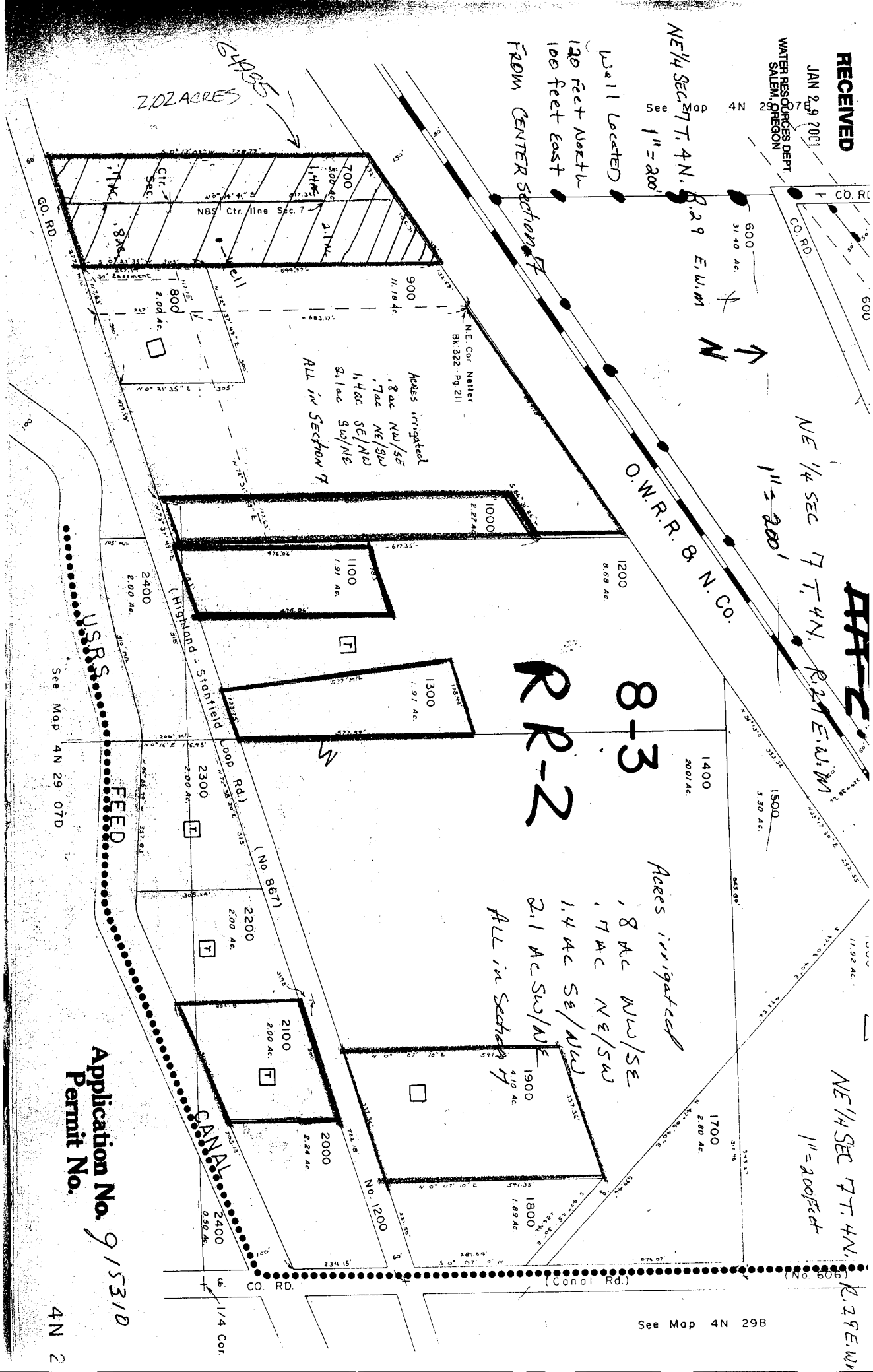
Acre irrigated

8 ac NW/SE
7 ac NE/SW

1.4 ac SE/NW
2.1 ac SW/NE

All in Section 7

Acre irrigated
8 ac NW/SE
7 ac NE/SW
1.4 ac SE/NW
2.1 ac SW/NE
All in Section 7



Application No. 91531D
Permit No.

4N 2

See Map 4N 29B