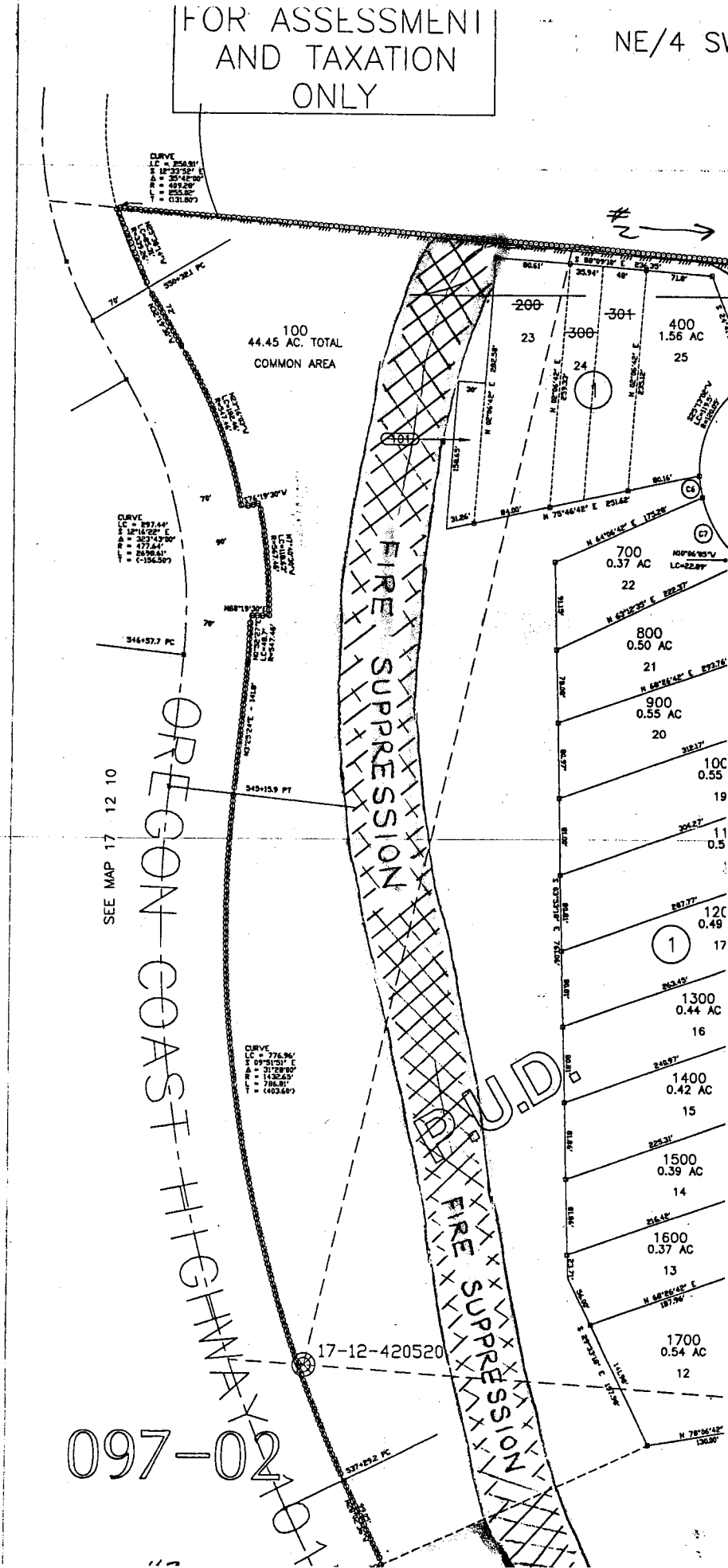


FOR ASSESSMENT
AND TAXATION
ONLY

NE/4 SW

RECEIVED
JAN 09 2002
WATER RESOURCES DEPT.
SALEM, OREGON



SEE MAP 17 12 10

097-02

17-12-420520

THIS MAP REPLACES LINEN 17 12 10 31

SECTION 10 T.17S. R.12W. W.M.
LANE COUNTY/MID-COAST

17 12 10 31

C.A.D. SYS.

DATE	REVISION	EMPLOYEE
12-21-99	NEW MAP ON CAD SYSTEM	LCAT414

SCALE 1" = 100'



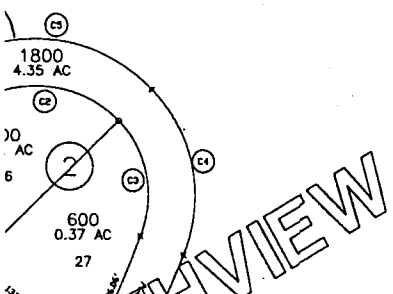
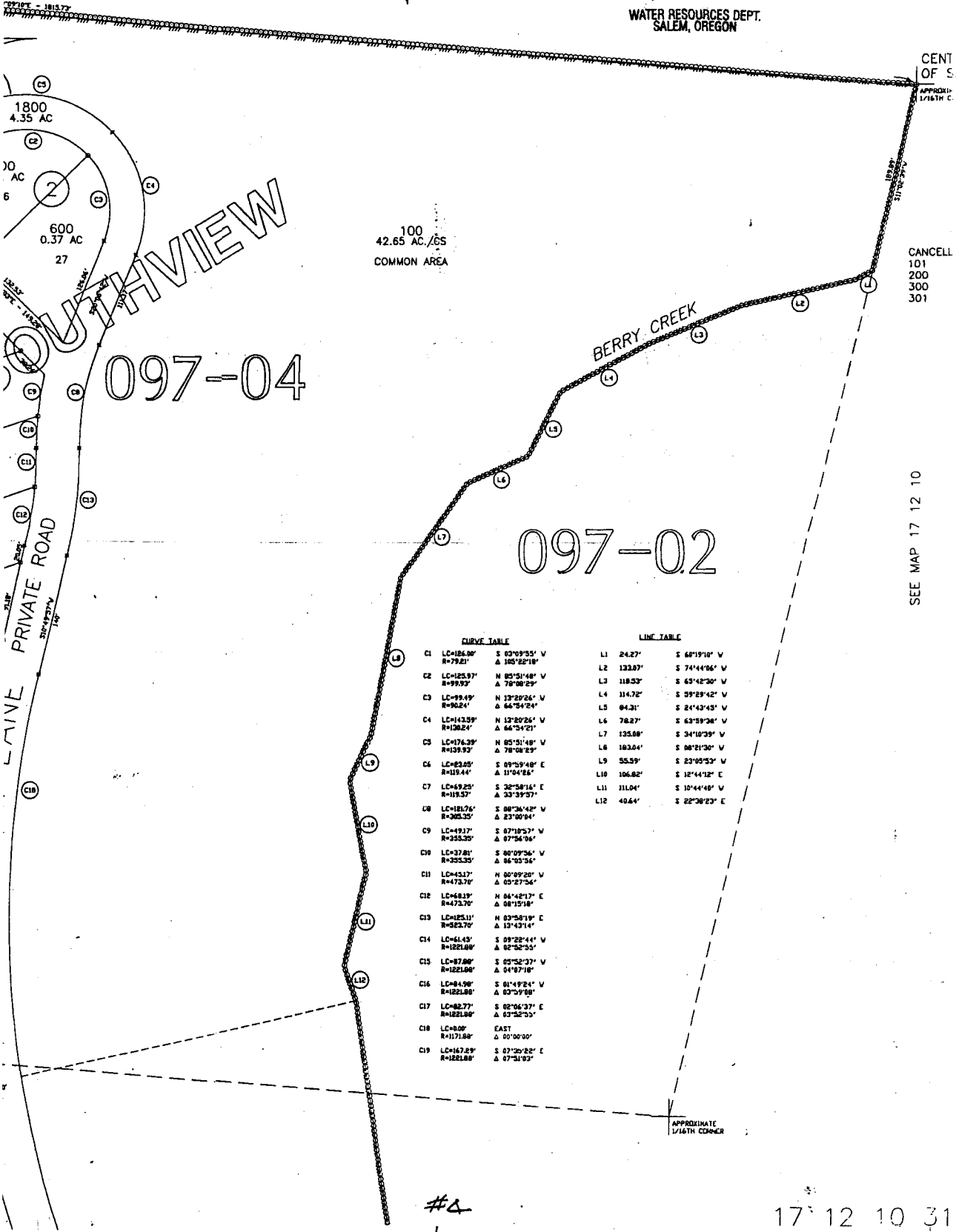
RECEIVED

JAN 6 2002

WATER RESOURCES DEPT.
SALEM, OREGON

SEE MAP 17 12 10

#1



100
42.65 AC/.65
COMMON AREA

CANCELLED
101
200
300
301

SEE MAP 17 12 10

CURVE TABLE

C1	LC=185.00'	S 02°09'53" V	R=79.81'	Δ 105°22'18"
C2	LC=125.97'	N 85°51'48" V	R=99.93'	Δ 78°08'29"
C3	LC=99.49'	N 13°29'26" V	R=90.24'	Δ 66°54'24"
C4	LC=143.59'	N 13°29'26" V	R=130.24'	Δ 66°54'21"
C5	LC=176.39'	N 85°51'48" V	R=139.93'	Δ 78°08'29"
C6	LC=82.05'	S 09°59'48" E	R=119.44'	Δ 11°04'26"
C7	LC=69.25'	S 32°58'16" E	R=119.37'	Δ 33°39'57"
C8	LC=181.76'	S 08°38'42" V	R=105.35'	Δ 23°00'04"
C9	LC=49.17'	S 07°19'57" V	R=355.35'	Δ 07°56'06"
C10	LC=37.81'	S 00°09'26" V	R=355.35'	Δ 86°03'56"
C11	LC=45.17'	N 00°09'26" V	R=473.70'	Δ 03°27'56"
C12	LC=68.19'	N 04°42'17" E	R=473.70'	Δ 08°15'18"
C13	LC=125.11'	N 03°58'19" E	R=523.70'	Δ 13°43'14"
C14	LC=61.43'	S 09°22'44" V	R=122.88'	Δ 05°52'59"
C15	LC=87.80'	S 05°52'37" V	R=122.88'	Δ 04°07'18"
C16	LC=84.98'	S 01°49'24" V	R=122.88'	Δ 03°09'08"
C17	LC=82.77'	S 02°06'37" E	R=122.88'	Δ 03°32'55"
C18	LC=8.00'	EAST	R=117.88'	Δ 00°00'00"
C19	LC=167.89'	S 07°30'22" E	R=122.88'	Δ 07°31'03"

LINE TABLE

L1	24.27'	S 60°19'10" V
L2	133.87'	S 74°44'06" V
L3	118.53'	S 63°42'30" V
L4	114.72'	S 39°29'42" V
L5	84.21'	S 21°43'43" V
L6	78.27'	S 63°59'34" V
L7	135.88'	S 34°10'39" V
L8	183.64'	S 08°21'30" V
L9	55.59'	S 23°05'53" V
L10	106.82'	S 12°44'12" E
L11	111.04'	S 10°44'48" V
L12	40.64'	S 22°38'23" E

APPROXIMATE
1/16TH CORNER

#4

17 12 10 31

(3)

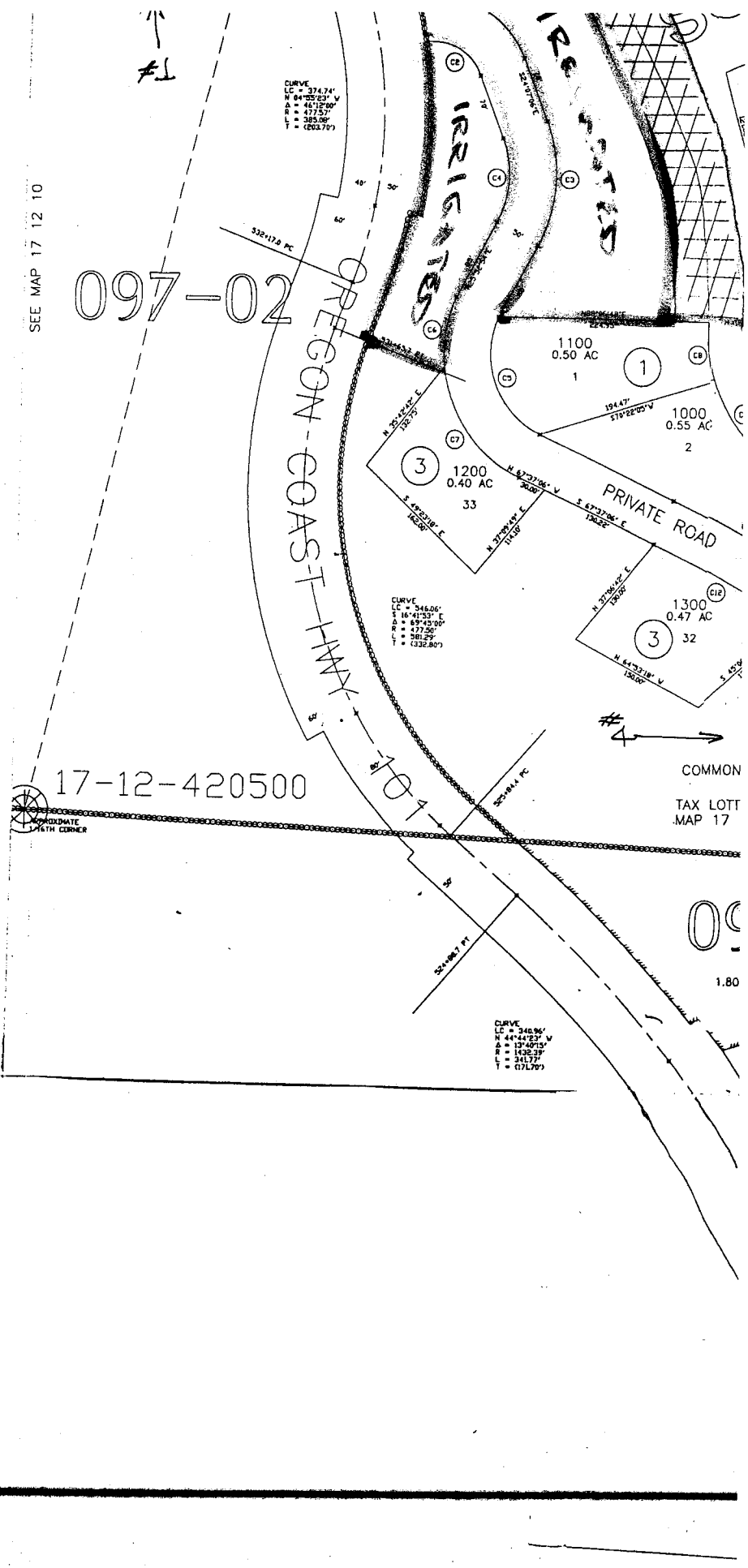
FL

SEE MAP 17 12 10

097-02

RECEIVED
JAN 09 2002
WATER RESOURCES DEPT.
SALEM, OREGON

17-12-420500



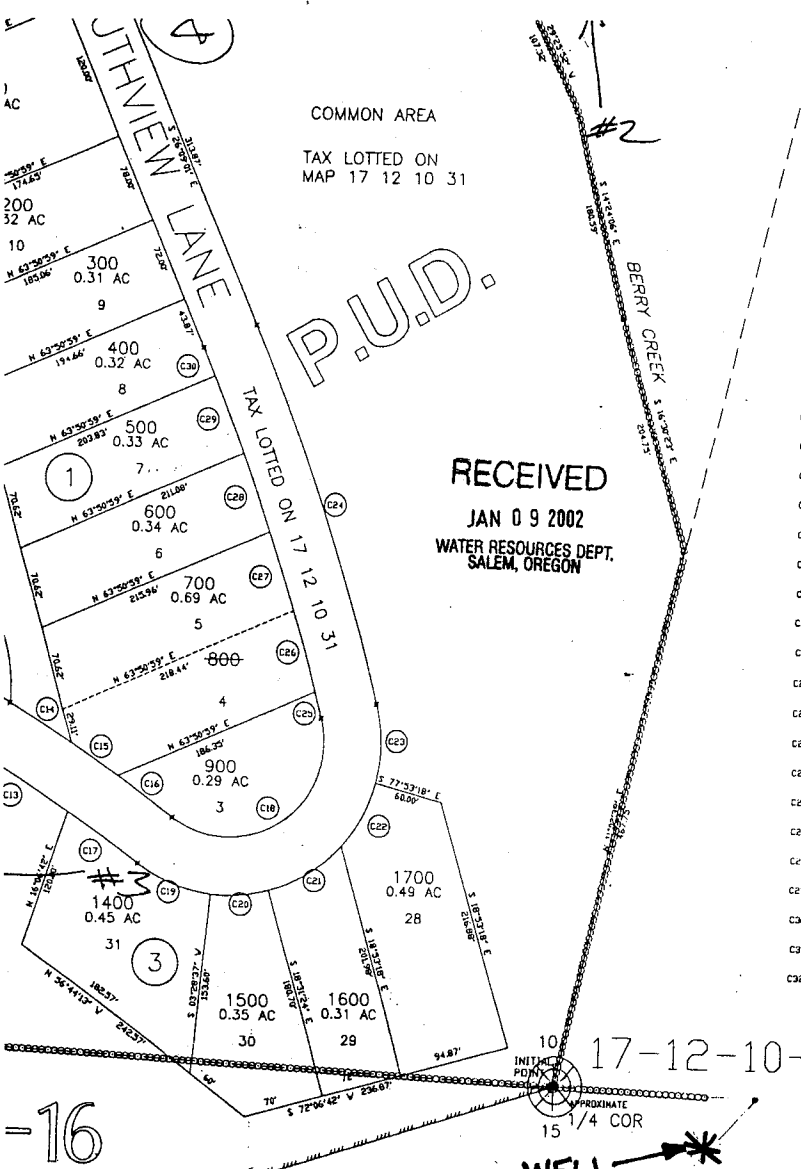
COMMON
TAX LOTT
MAP 17

00
1.80

CURVE
LC = 346.06'
N 44°44'23" W
Δ = 104.875'
R = 132.33'
L = 341.77'
T = 071.79'

CURVE
LC = 346.06'
S 16°41'23" E
Δ = 69.43'00"
R = 477.50'
L = 281.29'
T = (332.80')

CURVE
LC = 374.74'
N 84°25'23" W
Δ = 451.20'
R = 477.50'
L = 385.06'
T = (662.70')



COMMON AREA
TAX LOTTED ON
MAP 17 12 10 31

P.U.D.

RECEIVED
JAN 09 2002
WATER RESOURCES DEPT.
SALEM, OREGON

- C1 LC=132.99' N 63°54'34" V
R=102.80' Δ 78°33'09"
- C2 LC=49.66' N 63°54'34" V
R=55.00' Δ 78°33'09"
- C3 LC=131.01' N 00°52'34" E
R=153.00' Δ 49°39'58"
- C4 LC=48.75' N 00°52'34" E
R=105.00' Δ 49°39'58"
- C5 LC=129.92' S 22°59'06" E
R=92.45' Δ 89°16'04"
- C6 LC=73.89' S 06°26'58" V
R=142.46' Δ 30°03'41"
- C7 LC=142.75' S 38°00'53" E
R=142.46' Δ 53°18'23"
- C8 LC=62.32' S 38°23'05" E
R=159.59' Δ 22°21'07"
- C9 LC=100.17' S 38°03'11" E
R=159.59' Δ 36°23'27"
- C10 LC=136.00' N 26°31'56" V
R=137.93' Δ 39°04'33"
- C11 LC=174.05' N 64°46'44" V
R=175.15' Δ 05°40'44"
- C12 LC=169.14' N 64°46'48" V
R=170.15' Δ 05°40'44"
- C13 LC=98.89' N 60°24'56" V
R=170.15' Δ 03°03'03"
- C14 LC=62.89' N 60°24'56" V
R=175.15' Δ 02°03'03"
- C15 LC=49.63' N 59°20'52" V
R=175.15' Δ 01°23'55"
- C16 LC=38.92' N 57°19'20" V
R=175.15' Δ 01°55'17"
- C17 LC=75.07' N 57°37'43" V
R=170.15' Δ 02°31'11"
- C18 LC=155.02' N 53°18'57" E
R=82.32' Δ 148°37'52"
- C19 LC=68.84' S 71°26'42" E
R=152.32' Δ 30°09'25"
- C20 LC=50.58' N 82°28'34" E
R=132.32' Δ 29°09'25"
- C21 LC=73.61' N 55°19'29" E
R=132.32' Δ 32°18'07"
- C22 LC=61.92' N 25°38'31" E
R=132.32' Δ 27°03'31"
- C23 LC=66.51' N 02°26'38" V
R=132.32' Δ 29°06'42"
- C24 LC=33.22' N 21°34'31" V
R=213.70' Δ 09°09'03"
- C25 LC=22.23' N 17°18'41" V
R=206.370' Δ 00°37'12"
- C26 LC=70.61' N 18°25'59" V
R=206.370' Δ 01°57'28"
- C27 LC=70.24' N 20°33'25" V
R=206.370' Δ 01°57'18"
- C28 LC=70.14' N 22°30'25" V
R=206.370' Δ 01°56'51"
- C29 LC=70.03' N 24°27'11" V
R=206.370' Δ 01°56'40"
- C30 LC=86.13' N 25°47'17" V
R=206.370' Δ 00°43'32"
- C31 LC=303.89' S 19°13'57" E
R=122.301' Δ 14°14'09"
- C32 LC=893.40' S 18°56'44" E
R=171.88' Δ 14°22'58"

SEE MAP 17 12 10

17-12-10-S/4

WELL

POD N 44° 06.014'
W 124° 06.768'

17 12 10 34

The center of the pump house bears South 73° 15' East, a distance of 138.9 feet from the General Land Office Brass Cap marking the one-quarter corner common to Section 10 and 15, in Township 17 South, Range 12 West, Willamette Meridian, Lane County, Oregon.