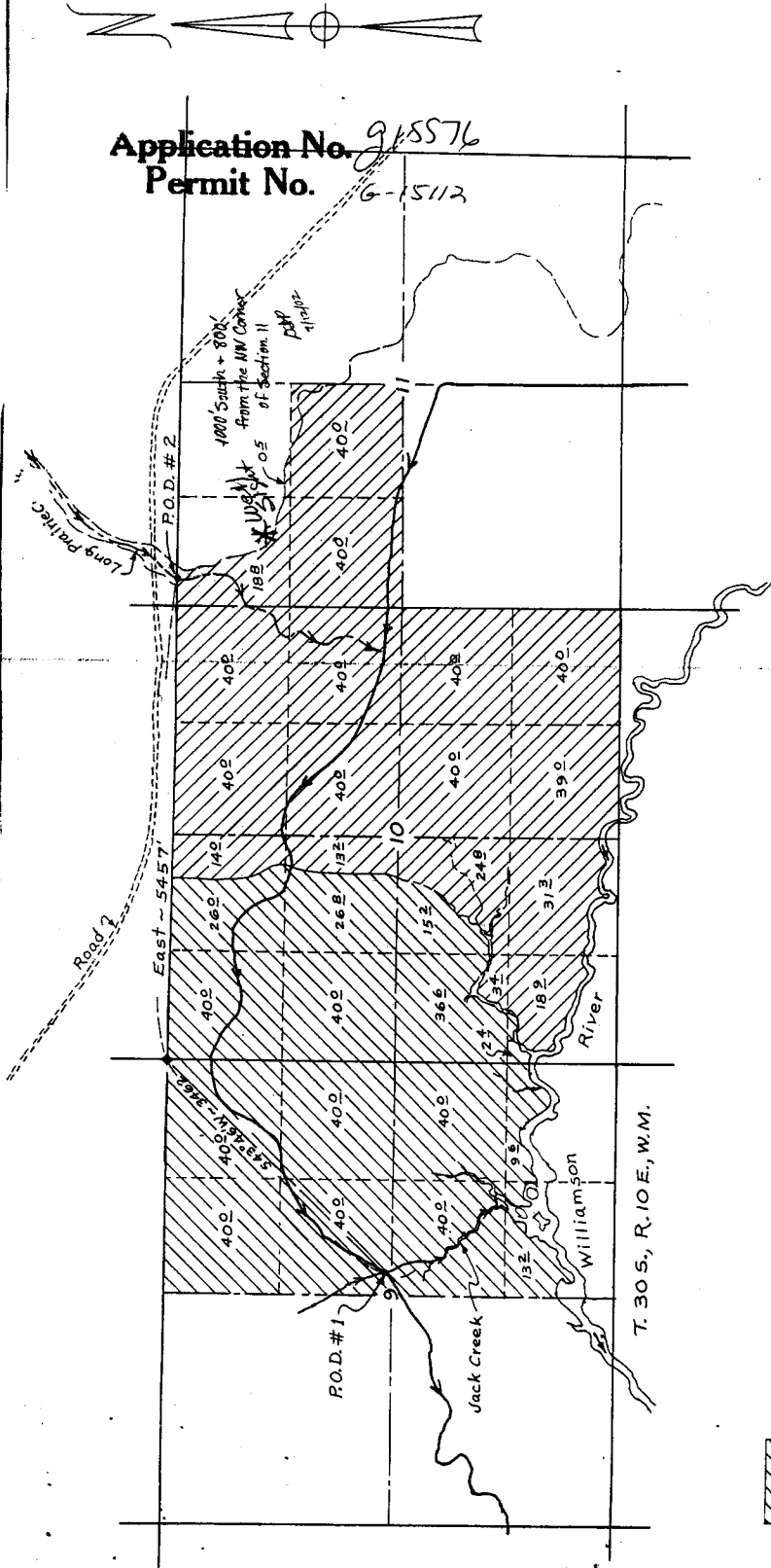

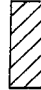


RECEIVED
 AUG 07 2001
 WATER RESOURCES DEPT
 SALEM, OREGON

Application No. *915576*
 Permit No. *6-15112*



-  Lands to be irrigated from Jack Creek
-  Lands to be irrigated from Long Prairie Creek

1120 Total
 831.5 Water Righted

Revised 1/11/78

MAP SHOWING LANDS TO BE IRRIGATED
 VIOLA M. GOULDIN
 AND
 VIOLA GOULDIN & RAY J. MICHELS
 TRUSTEES UNDER THE ESTATE OF
 WILLIAM GOULDIN
 FROM
 JACK CREEK & LONG PRAIRIE CREEK
 IN SECTIONS 9, 10 & 11, T. 30 S., R. 10 E., W.M.
 KLAMATH COUNTY, OREGON
 Scale: 1" = 1320'
 Map prepared by:
 WILLIAM L. WAL
 & Associates
 Consulting Engineers
 Klamath Falls, Oregon



42725

January, 1977