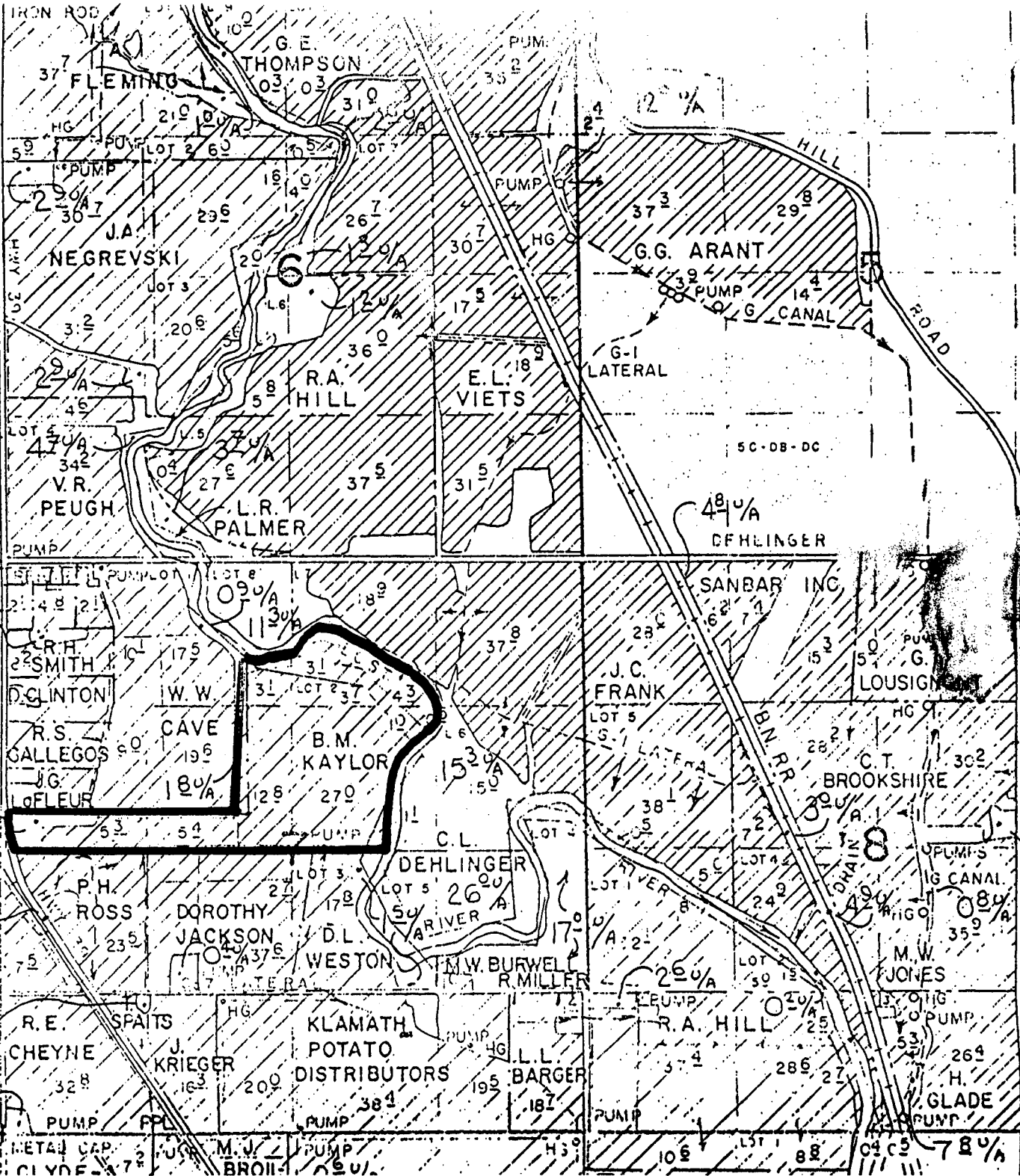


RECEIVED

OCT 26 2001

JAN 10 2002

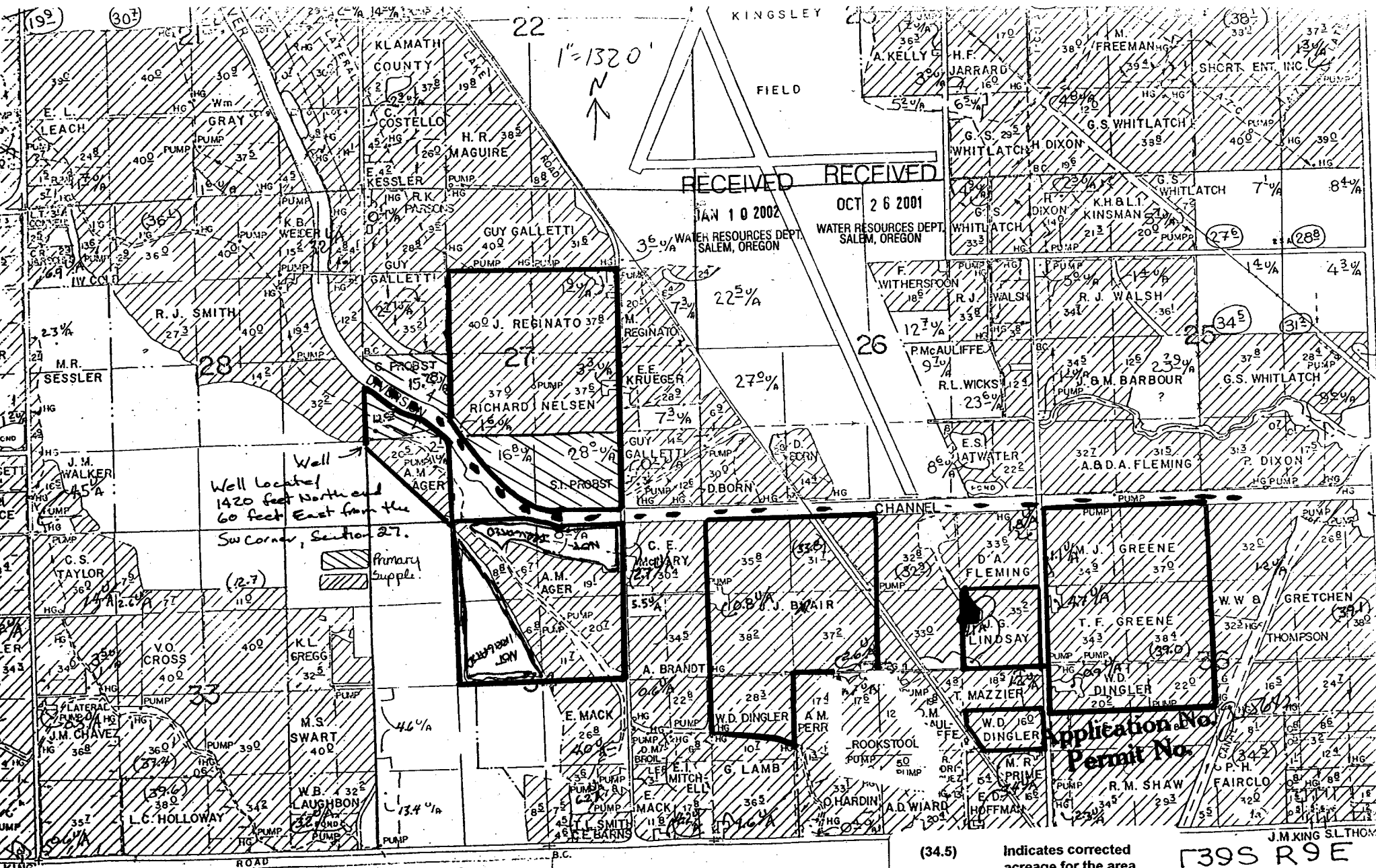
WATER RESOURCES DEPT.
SALEM, OREGON



Application No. 255642
Permit No.

1" = 1320'
N
T. 40S. R. 10E.

REBAR



RECEIVED RECEIVED
 JAN 10 2002 OCT 26 2001
 WATER RESOURCES DEPT. SALEM, OREGON

Well located 1420 feet North and 60 feet East from the Sw Corner, Section 27.

Primary Supply

(34.5) Indicates corrected acreage for the area

Application No. _____
 Permit No. _____

739S R9E

J.M.KING SLTHOM