

ADELAIDE FARM LLC

Application # 6-15461

T. 5 S. R. 4 W

SECTION 13 12S 14W W1W

Scale

AERIAL 3X0 158

SCALE 1:9600

Tax Lot 5413-301 (Planning Dept Office) per
THE LOT 5413-300 (Hessels) (Office) Forward per
REC MAP 5 4 12 TRX Lot 5413-300

Sec. 13

YAMHILL COUNTY

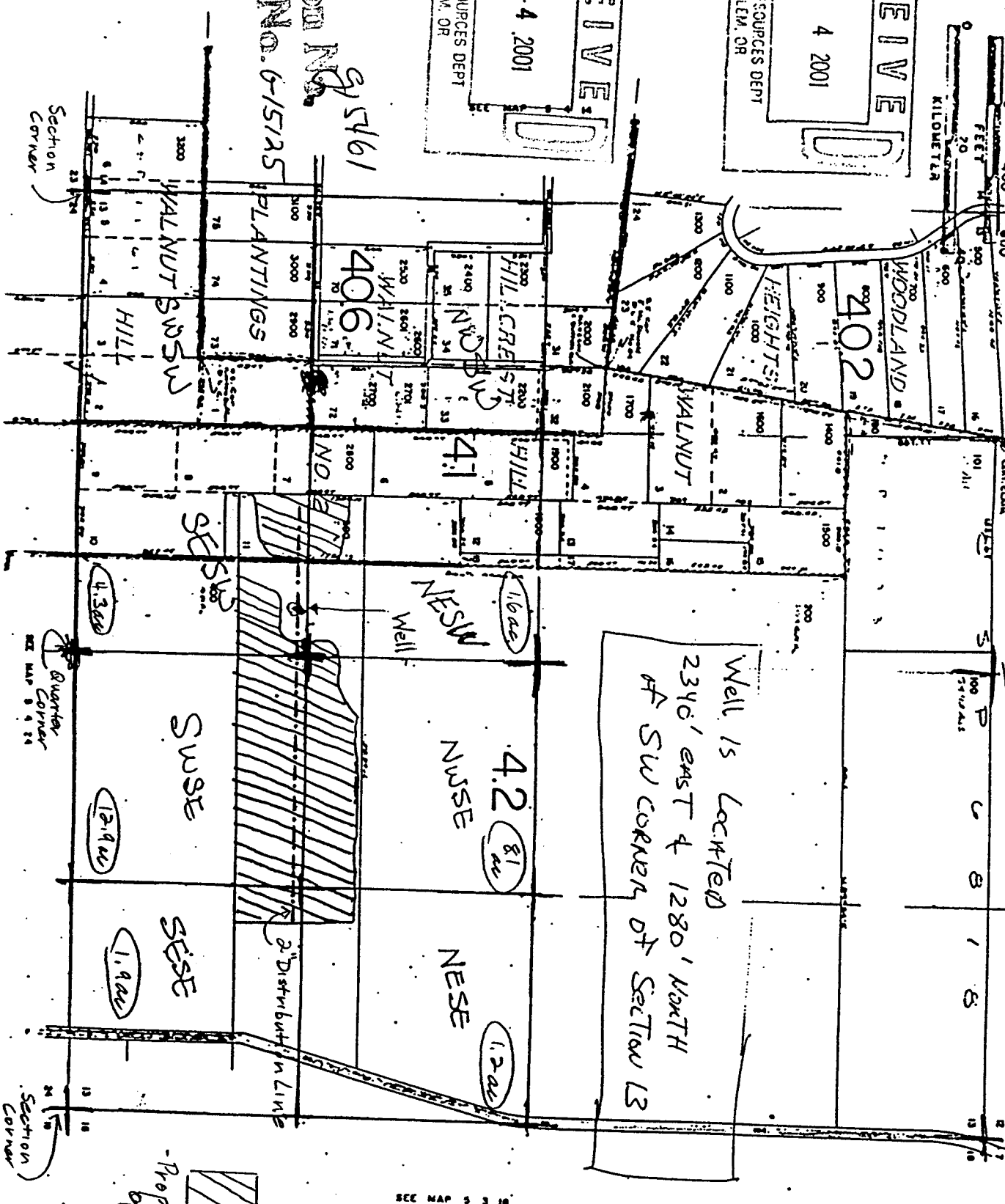
1" = 800'

5 4 15

RECEIVED
APR 4 2001
WATER RESOURCES DEPT
SALEM, OR

RECEIVED
APR 4 2001
WATER RESOURCES DEPT
SALEM, OR

Application No. 6-15461
Permit No. 6-15125



Section Corner

Section Corner

Proposed Place of Use

SEE MAP 5 3 12

ADELAIDE FARM LLC
Proposed Irrigation Plan

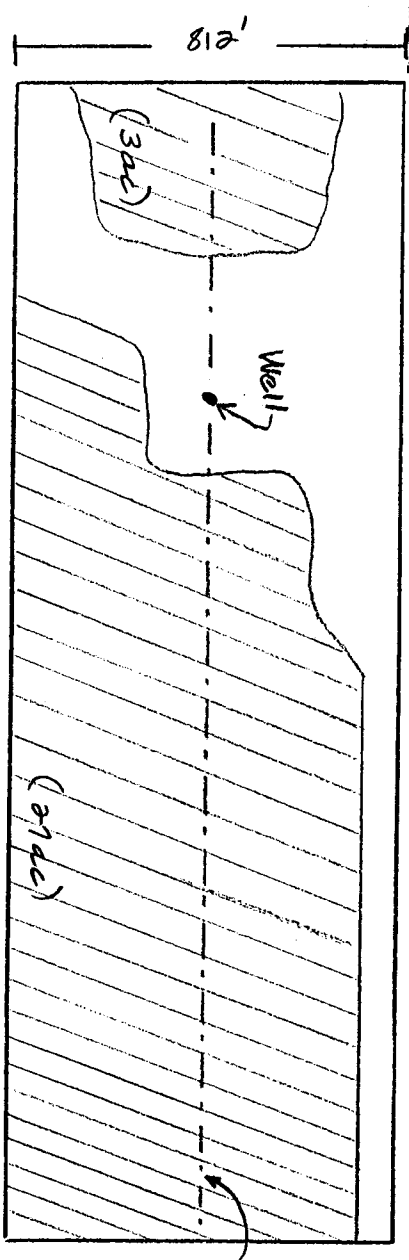
Yamhill County, Oregon
T 5 S R 4 W Sec 13

Tax Lot 5413-301-Planning Dept
5413-300-Assessor's Office

Application # G-15461
Permit G-15125

Formerly All Taxlot 5413-300

RECEIVED
APR 4 2001
WATER RESOURCES DEPT
SALEM, OR



Well is 2340' east
& 1280' north of
SW corner of
Section 13.



Proposed Place of Use

1" = 400'

