

MAR 26 2001

T40S R09E W.M. KLAMATH COUNTY

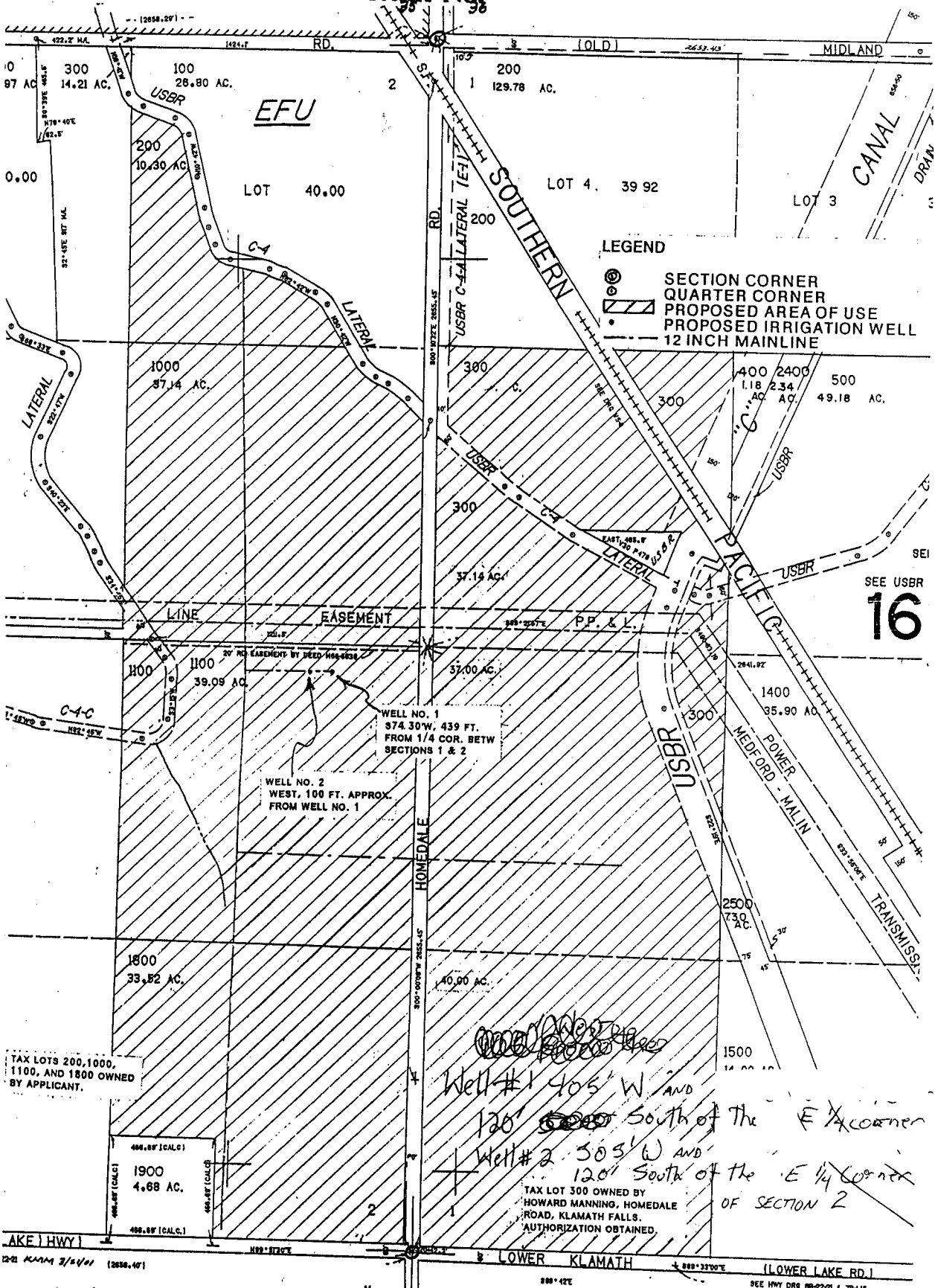
APR 11 2001



WATER RESOURCES DEPT. SALEM, OREGON  
SCALE: 1 INCH = 400 FEET

WATER RESOURCES DEPT. SALEM, OREGON

Application No. *815471*  
Permit No. *6-15134*



LEGEND  
● SECTION CORNER  
○ QUARTER CORNER  
▨ PROPOSED AREA OF USE  
● PROPOSED IRRIGATION WELL  
--- 12 INCH MAINLINE

SEE USBR  
**16**

TAX LOTS 200, 1000, 1100, AND 1800 OWNED BY APPLICANT.

*Handwritten notes:*  
Well #1 405' W AND 120' South of the E 1/4 corner  
Well #2 305' W AND 120' South of the E 1/4 corner  
TAX LOT 300 OWNED BY HOWARD MANNING, HOMEDALE ROAD, KLAMATH FALLS. AUTHORIZATION OBTAINED

AKEL HWY 1  
LOWER KLAMATH (LOWER LAKE RD.)

*Handwritten notes:*  
COMPILED FROM INFORMATION CONTAINED IN THE FILE  
12/12/01 RUK