

Scale 1" = 400'

MORROW COUNTY
1" = 200'



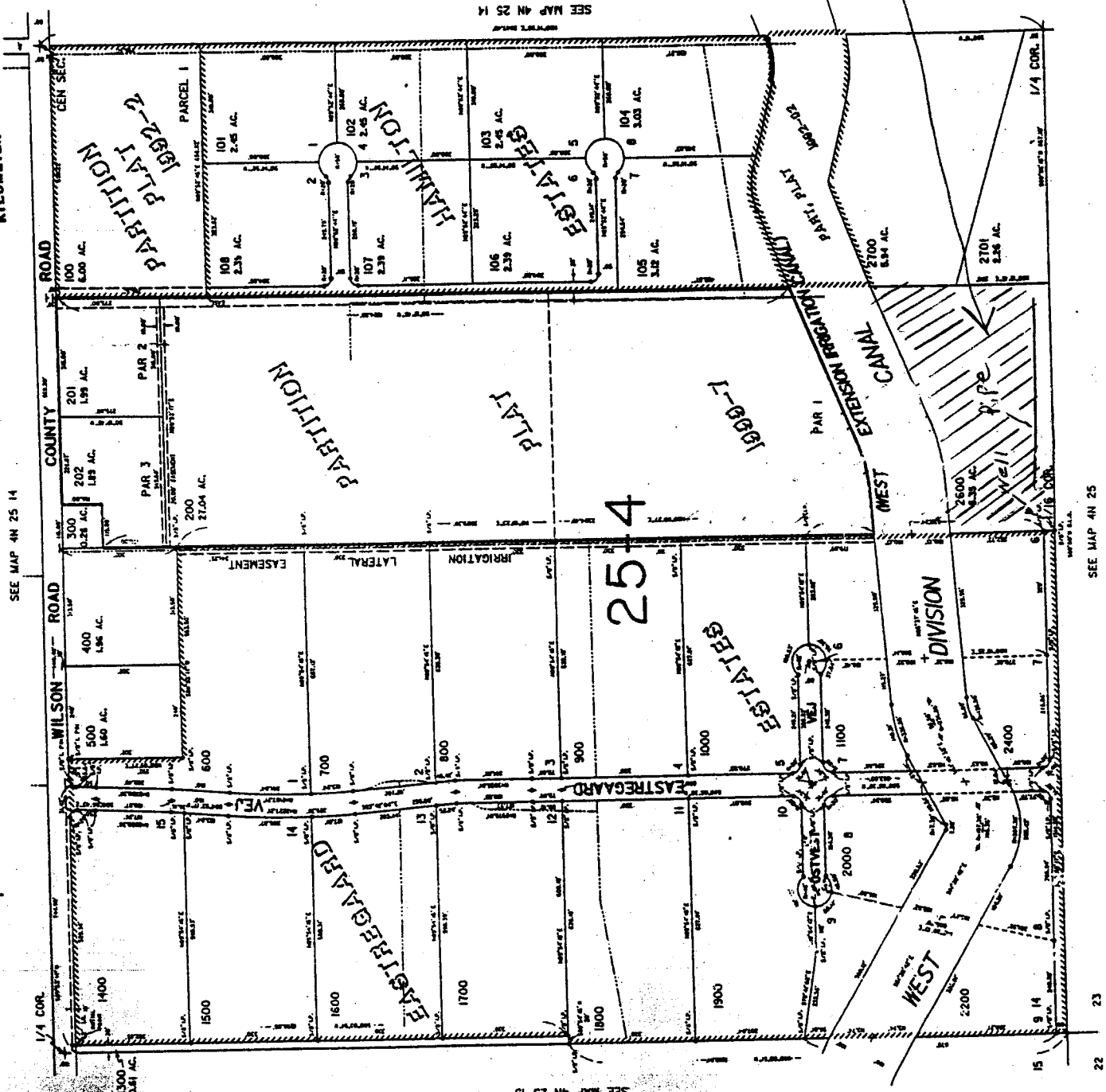
THIS MAP WAS PREPARED FOR
ASSESSMENT PURPOSE ONLY

RECEIVED

APR 05 2001
WATER RESOURCES DEPT
SALEM, OREGON

Well 60 North
60 East of
1/16 Cor.
Place of use
Lot 2600
5 AC.
SE 1/4 SW 1/4

REVISED 4-13-99, RA 4N2514C



Application No. 915467
Permit No. G-15140