

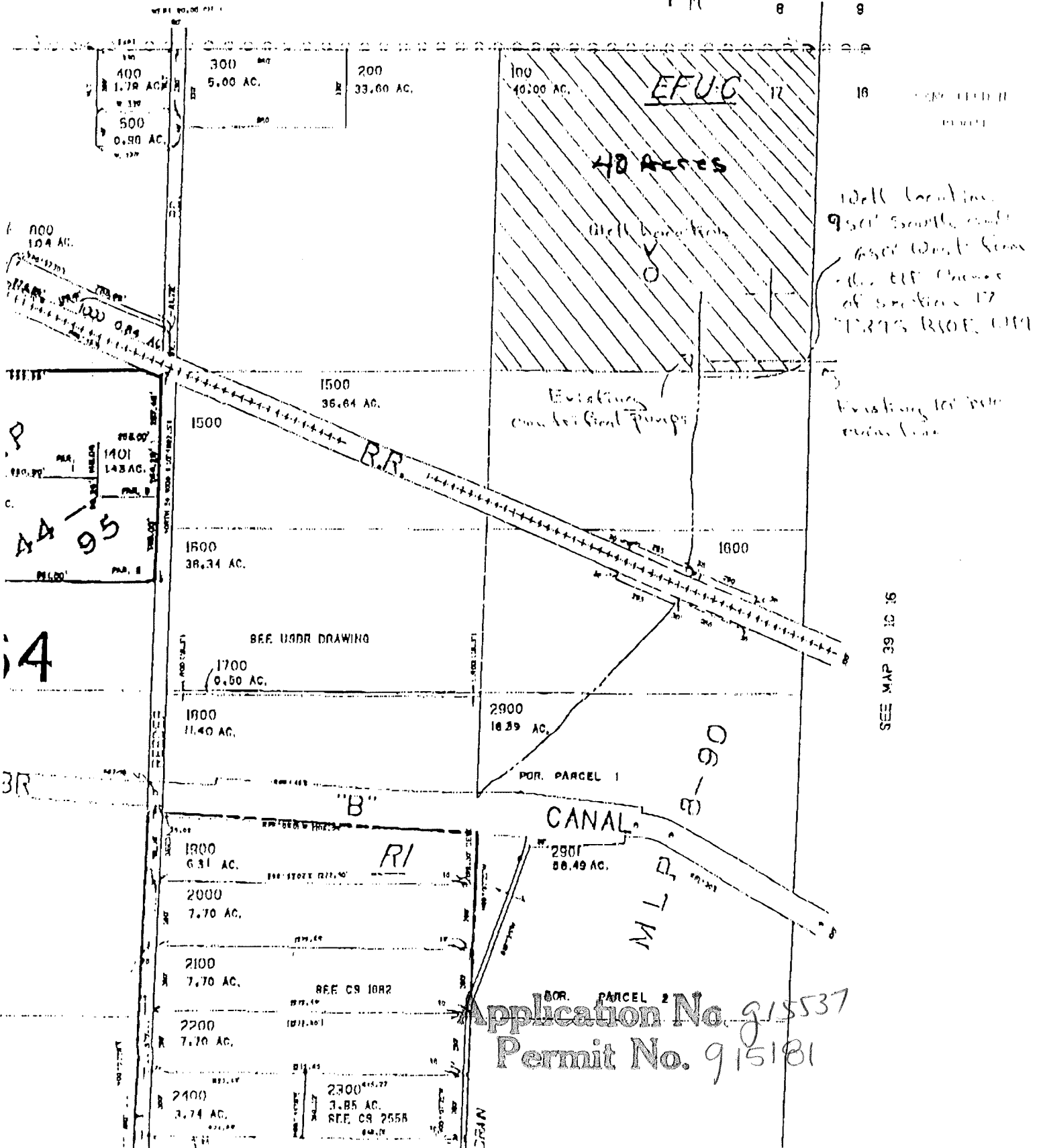
SECTION 17 T.39S. R.10E. W.M.  
KLAMATH COUNTY

Doug McCabe Ranch  
Klamath Falls

39 10 17

T-100

SEE MAP 39 10 00



Well locations  
 9500 South and  
 6500 West  
 Change of Section 17  
 T.39S. R.10E. W.M.

Elevations on the  
 Canal Pumps

SEE MAP 39 10 16

Application No. 915537  
 Permit No. 915181

1.32 Acres

SEE MAP 39 10 09C

Doug McCabe Ranch

SEE MAP

SPL T:5 3430

1100  
28.16 AC.

EFU-C

500  
8.77 AC.

1200  
139.66 AC.

700  
4.36 AC.

600  
4.91 AC.

30 Acres

10 Acres

800  
1.10 AC.

900  
9.77 AC.

115 4001

Existing 10" pipe

Existing 8" ROR main line to center pivot

39.75 Acres

1000  
8.00 AC.

1300  
74.98 AC.

25.25 Acres

164

2300  
25.78 AC.

2.68 Acres

18 Acres

2200  
11.86 AC.

POR PARCEL 1

2301  
48.51 AC.

2201  
44.34 AC.

POR PARCEL 2

Application No. 15537  
Permit No.

1300

2100  
19.00 AC.

2000  
9.10 AC.

1900  
19.00 AC.

2000

1900

SEE MAP 39 10 17

17