

LOCATION of well to be  
Approx: 740'S ± 2,240'E  
from NW corner Section 8

**RECEIVED**

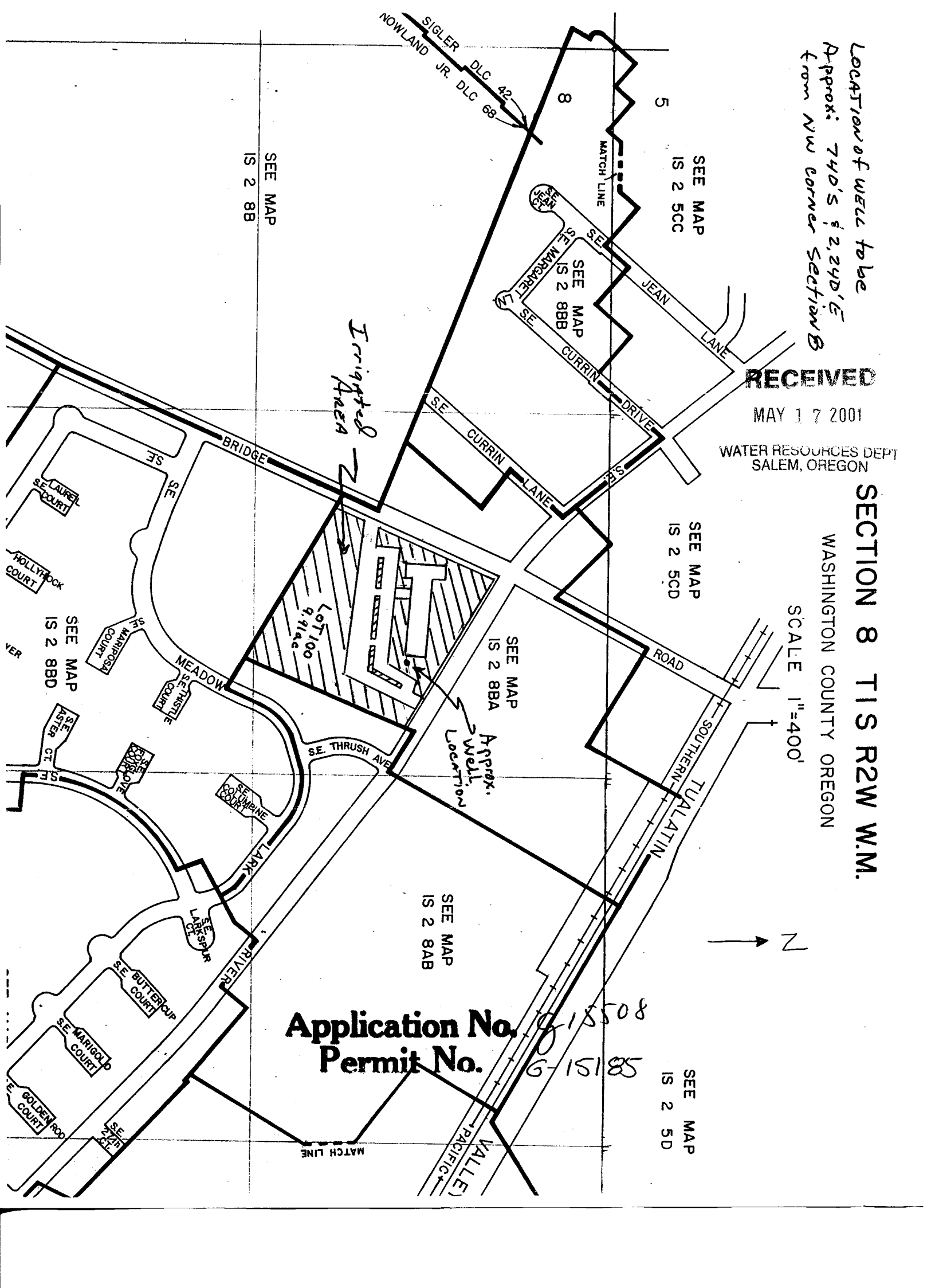
MAY 17 2001

WATER RESOURCES DEPT  
SALEM, OREGON

**SECTION 8 T1S R2W W.M.**

WASHINGTON COUNTY OREGON

SCALE 1"=400'



**Application No. 8-15508**  
**Permit No. 8-15189**

SEE MAP  
IS 2 8AB

SEE MAP  
IS 2 5D

SEE MAP  
IS 2 5CD

SEE MAP  
IS 2 8BA

SEE MAP  
IS 2 5CC

8

5

SEE MAP  
IS 2 8B

SEE MAP  
IS 2 8BD

SEE MAP  
IS 2 5A

SEE MAP  
IS 2 5B

SEE MAP  
IS 2 5C

SEE MAP  
IS 2 5D

SEE MAP  
IS 2 5E

SEE MAP  
IS 2 5F

SEE MAP  
IS 2 5G

SEE MAP  
IS 2 5H

SEE MAP  
IS 2 5I

SEE MAP  
IS 2 5J

SEE MAP  
IS 2 5K

SEE MAP  
IS 2 5L

SEE MAP  
IS 2 5M

SEE MAP  
IS 2 5N

SEE MAP  
IS 2 5O

SEE MAP  
IS 2 5P

SEE MAP  
IS 2 5Q

SEE MAP  
IS 2 5R

SEE MAP  
IS 2 5S

SEE MAP  
IS 2 5T

SEE MAP  
IS 2 5U

SEE MAP  
IS 2 5V

SEE MAP  
IS 2 5W

SEE MAP  
IS 2 5X

SEE MAP  
IS 2 5Y

SEE MAP  
IS 2 5Z