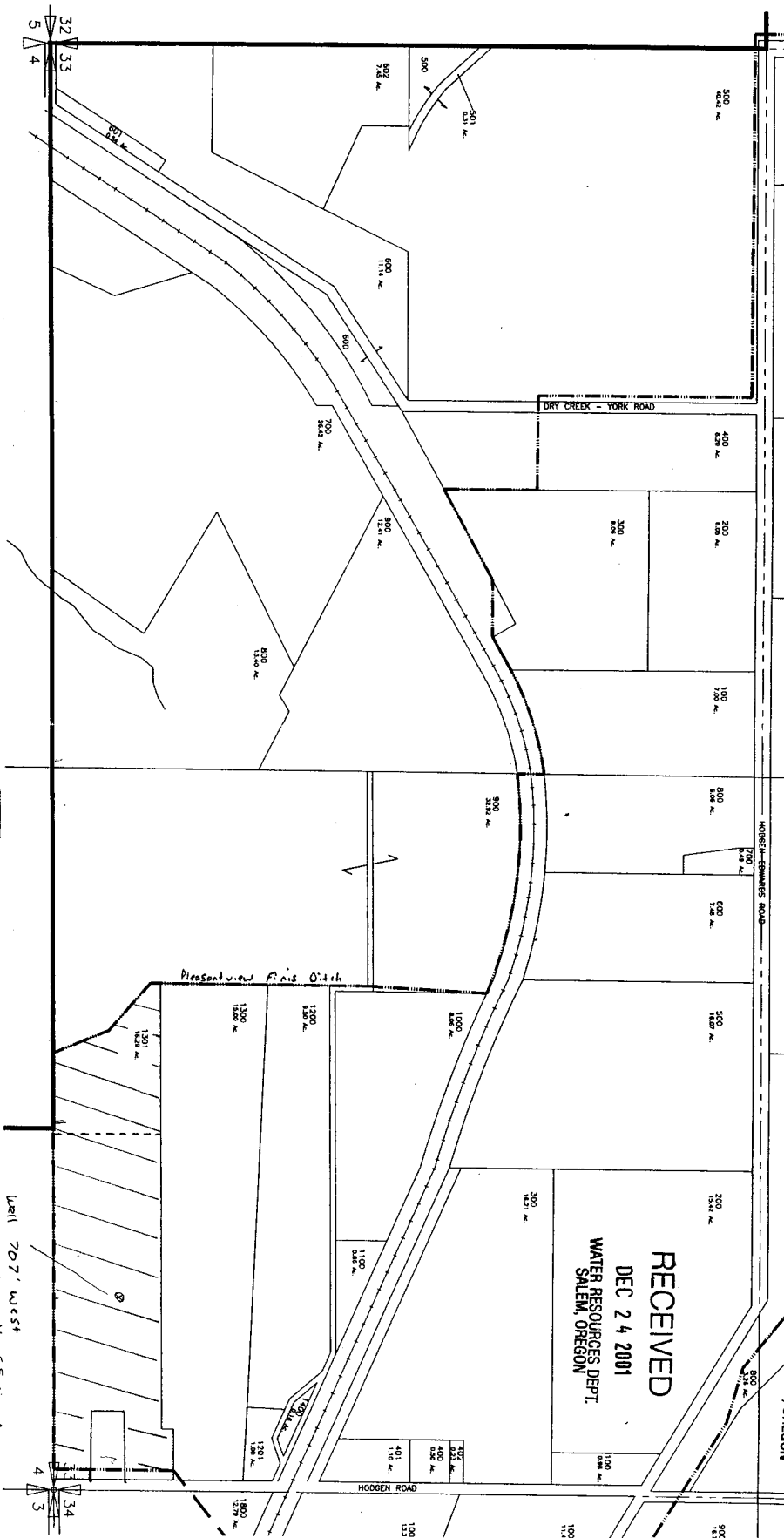


SOUTH 1/2 SECTION 33  
TOWNSHIP 6 NORTH, RANGE 35 EAST, W.M.

RECEIVED  
NOV 28 2001  
WATER RESOURCES DEPT.  
SALEM, OREGON



Application No. 6-15672  
Permit No. G-15802

proposed primary irrigation  
13 acres consisting of  
9.2 acres in the SW 1/4 Sec 33  
4.8 acres in the SE 1/4 Sec 33

WALLA WALLA RIVER IRRIGATION DISTRICT

SAM CONSULTING, INC.  
ARCHITECTS & ENGINEERS  
APPROVED: [Signature] 08/23/00  
4376-015 4376-335.DWG

DWG 335

