

February 1, 2002

T. 13 S., R. 33 E., W. 4

Scale 4" = 1 mile

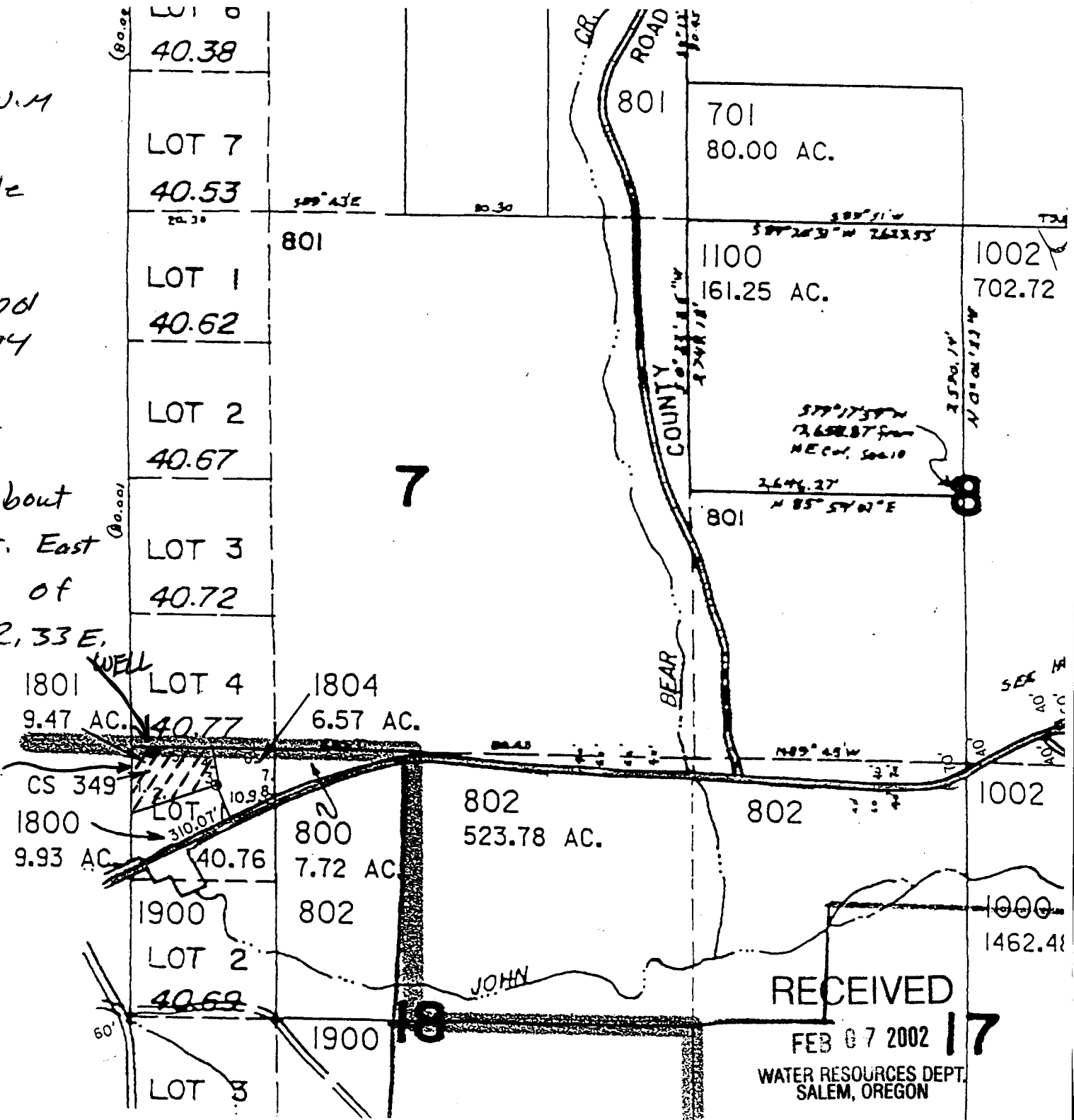
Application No. G-15701
Permit No. G-15294



The well location is about
20 ft. S. and 150 ft. East
of the NW corner of
Section 18, T. 13 S., R. 33 E.

Total acreage to be
irrigated = 9.47 acres

Application Map for
Kelly Voigt



RECEIVED
FEB 07 2002 17
WATER RESOURCES DEPT.
SALEM, OREGON