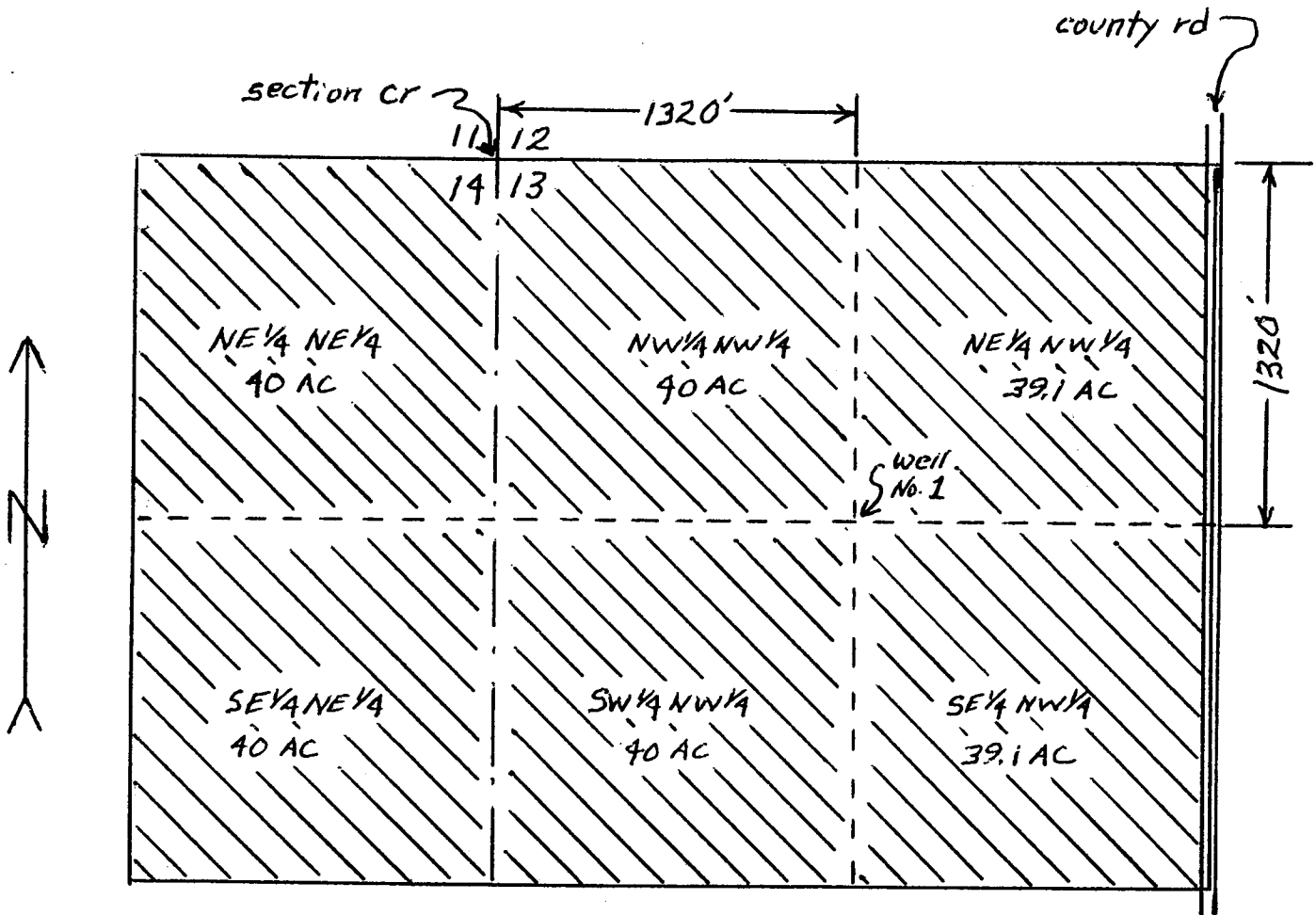
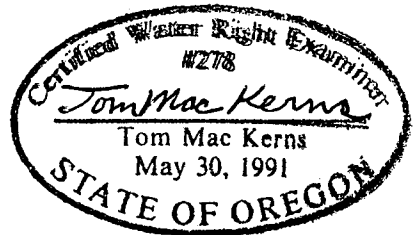


APPLICATION MAP FOR SUPPLEMENTAL WATER RIGHT

NW $\frac{1}{4}$ S.13 and the E $\frac{1}{2}$ NE $\frac{1}{4}$ S.14
T.7S.; R.38E.; W.M.



Application No. 515493
Permit No. 6-95208



RECEIVED

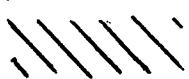
FEB 20 2001

WATER RESOURCES DEPT.
SALEM, OREGON

RECEIVED

MAY 03 2001

WATER RESOURCES DEPT.
SALEM, OREGON

LEGEND
Land to be irrigated 
scale 8 inches = 1 mile
Drawn 2-10-01 TMR