

U.S.A.

RECEIVED

T 405

R 10 E WM

JAN 16 2002

WATER RESOURCES DEPT.
SALEM, OREGON

1"=1320'

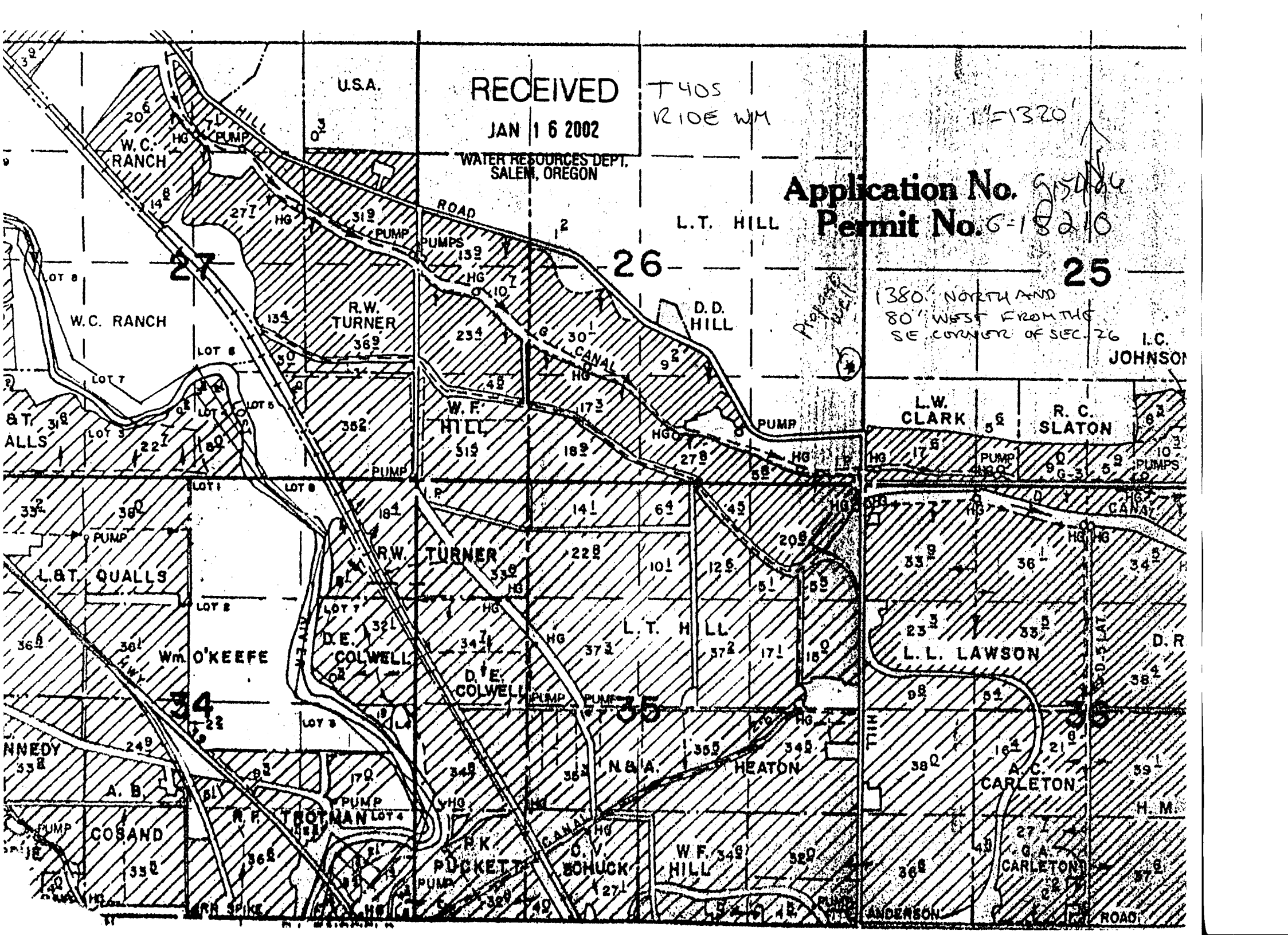
Application No. 95484

Permit No. 6-18210

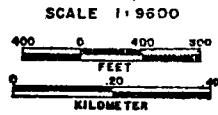
L.T. HILL

25

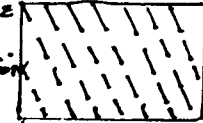
1380' NORTH AND
80' WEST FROM THE
SE CORNER OF SEC. 26 I.C.
JOHNSON



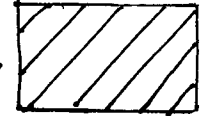
T405 RIDE Sec 25, 26



*BROKEN LINE
Indicates
PRIMARY Irrigation*



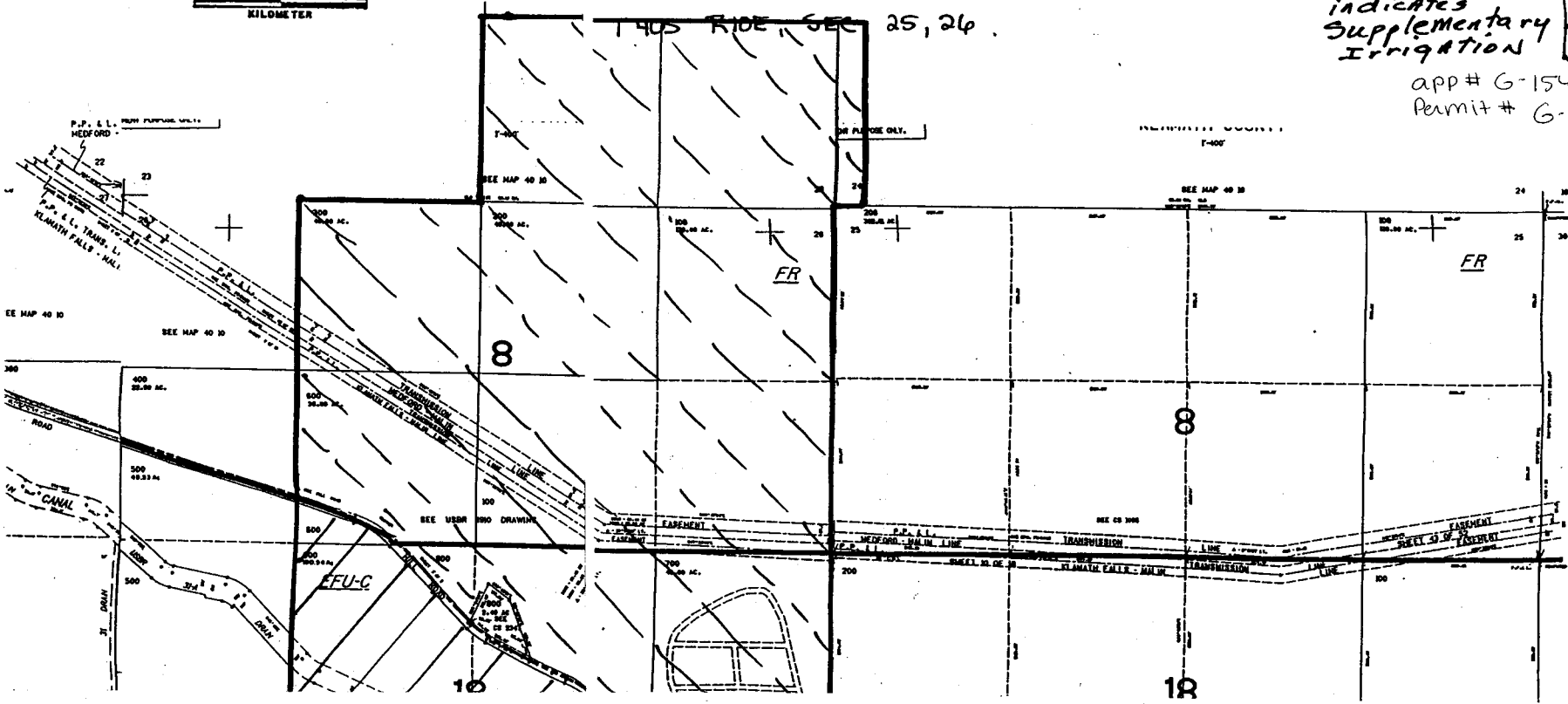
*Solid Line
indicates
Supplementary
Irrigation*

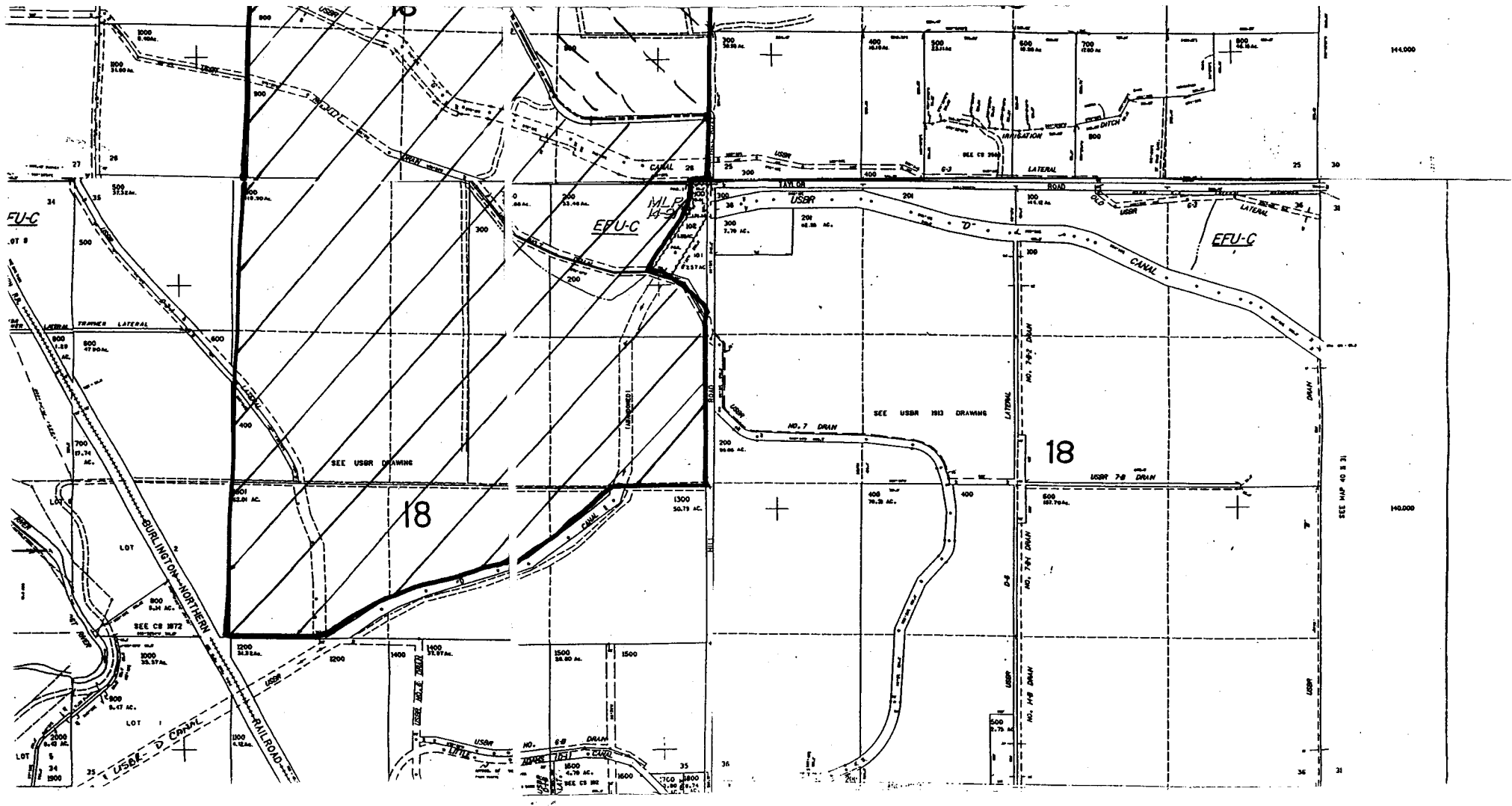


app# G-15496
Permit# G-15210

40 10 25

RECEIVED
MAY 23 2002
WATER RESOURCES DEPT
SALEM, OREGON





14,000

14,000

FU-C

EPU-C

EPU-C

MLP

USER

18

18

SEE MAP 40 3 31

