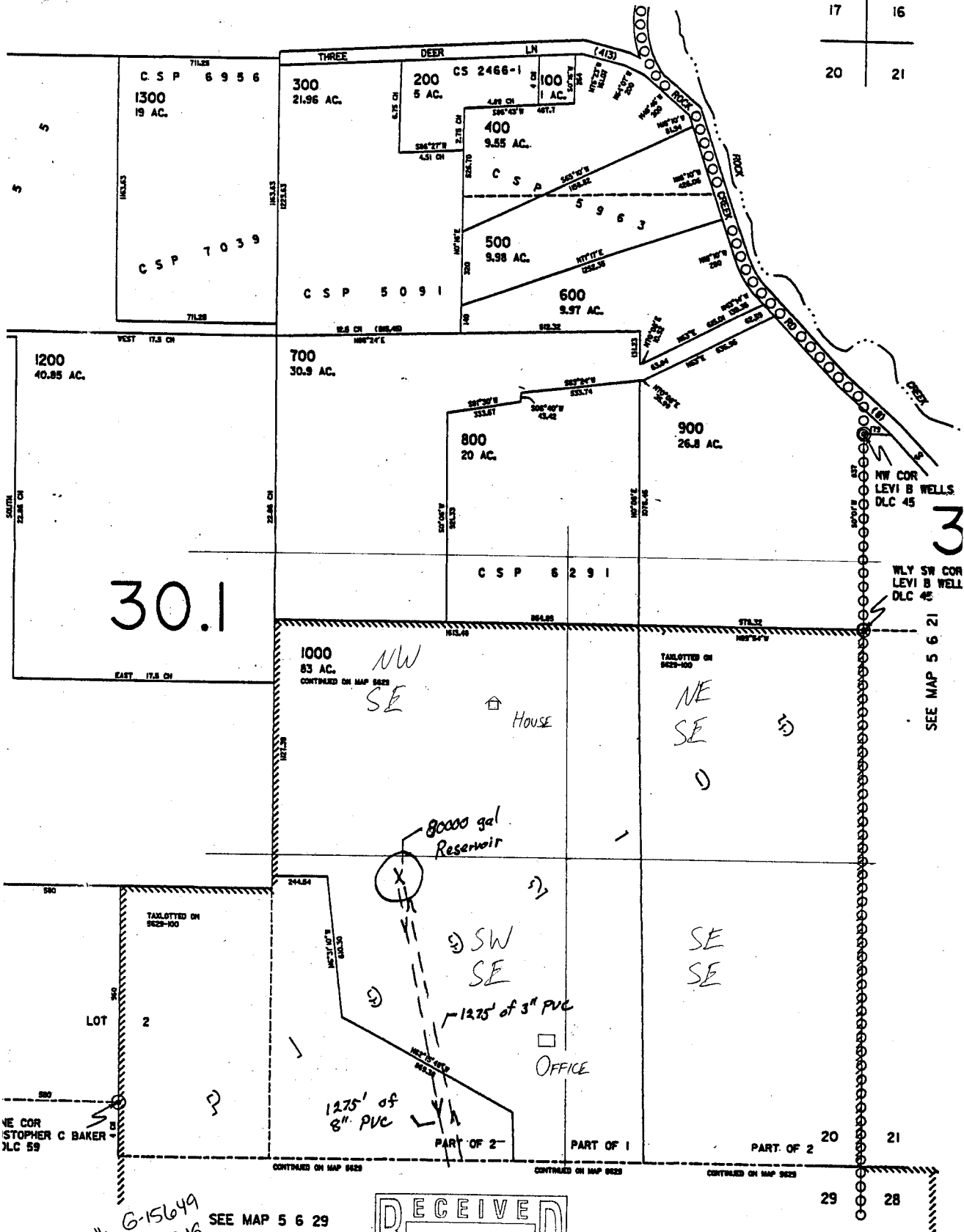


SECTION 20 T5S R6W W.M.
YAMHILL COUNTY
1" = 400'

FILE COPY

SEE MAP 5 6 17

17	16
20	21



1/4 COR STOPHER C BAKER JLC 59

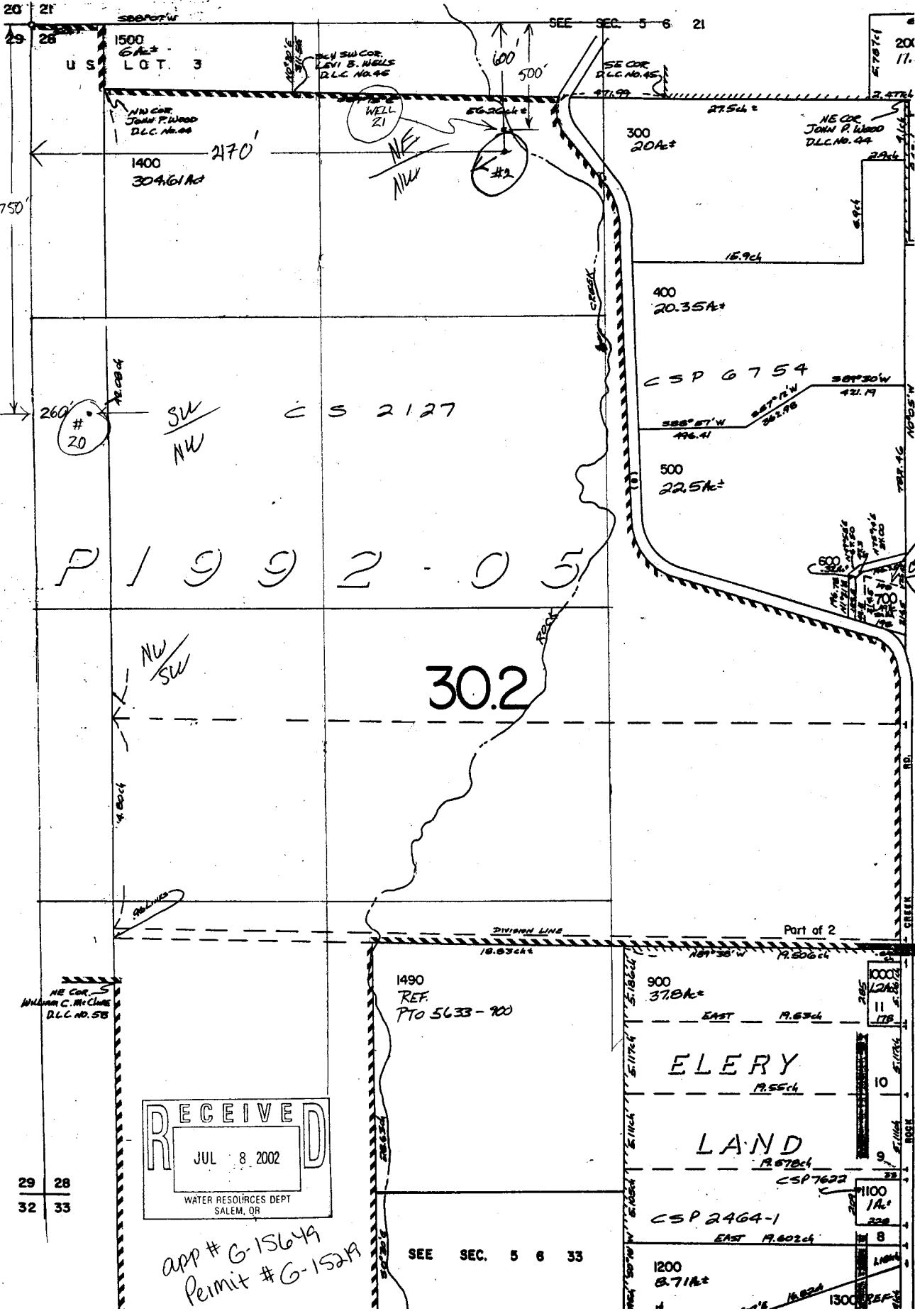
APP# 6-15649
Permit # 6-15219
SEE MAP 5 6 29

RECEIVED
JUL 8 2002
WATER RESOURCES DEPT
SALEM, OR

SECTION 28 T.5 S. R.6 W. WM.

YAMHILL COUNTY

1" = 400'



RECEIVED
 JUL 8 2002
 WATER RESOURCES DEPT
 SALEM, OR

app # G-15649
 Permit # G-15219

SEE SEC. 5 6 33

29 28
 32 33

20
 11.

1000
 12A±
 11
 17B

1100
 1A±
 22B

1300 REF

ELERY
 LAND
 CSP 2464-1

1490
 REF.
 PTO 5633-900

900
 37.8A±

1200
 8.71A±

1500
 6A±
 LOT 3

1400
 304.61A±

300
 20A±

400
 20.35A±

500
 22.5A±

NE COR
 JOHN P. WOOD
 D.L.C. NO. 24

NW COR
 JOHN P. WOOD
 D.L.C. NO. 24

SW COR.
 LEVI B. NIELLS
 D.L.C. NO. 45

SE COR
 D.L.C. NO. 45

NE COR.
 WILLIAM C. MCCLURE
 D.L.C. NO. 58

800
 20A±
 1000
 20A±
 1000
 20A±

SW
 NW
 #20

NW
 SW

C S 2127

C S P 6754

388° 27' W
 196.41

309° 30' W
 421.19

327° 19' W
 261.98

105° 5' W
 105.5

105° 5' W
 105.5

105° 5' W
 105.5

105° 5' W
 105.5

105° 5' W
 105.5

105° 5' W
 105.5

105° 5' W
 105.5

DIVISION LINE
 18.83A±

Part of 2

187° 38' W
 19.806A±

EAST
 19.83A±

EAST
 19.55A±

EAST
 19.87A±

CSP 7622

EAST
 19.602A±

16.82A±

27.5A±

27.5A±

15.9A±

388° 27' W
 196.41

327° 19' W
 261.98

105° 5' W
 105.5

105° 5' W
 105.5

105° 5' W
 105.5

105° 5' W
 105.5

105° 5' W
 105.5

105° 5' W
 105.5

105° 5' W
 105.5

105° 5' W
 105.5

SEE SEC. 5 6 21

20 21
 29 28

388° 27' W
 196.41

2170'

600
 500'

56.20A±

15.9A±

388° 27' W
 196.41

327° 19' W
 261.98

105° 5' W
 105.5

105° 5' W
 105.5

105° 5' W
 105.5

105° 5' W
 105.5

105° 5' W
 105.5

105° 5' W
 105.5

105° 5' W
 105.5

105° 5' W
 105.5

18.00A±

4.80A±

900

105° 5' W
 105.5

105° 5' W
 105.5

105° 5' W
 105.5

105° 5' W
 105.5

105° 5' W
 105.5

105° 5' W
 105.5

105° 5' W
 105.5

105° 5' W
 105.5

105° 5' W
 105.5

105° 5' W
 105.5

105° 5' W
 105.5

105° 5' W
 105.5

105° 5' W
 105.5

105° 5' W
 105.5

105° 5' W
 105.5

105° 5' W
 105.5

105° 5' W
 105.5

105° 5' W
 105.5

105° 5' W
 105.5

105° 5' W
 105.5

105° 5' W
 105.5