

6-15670

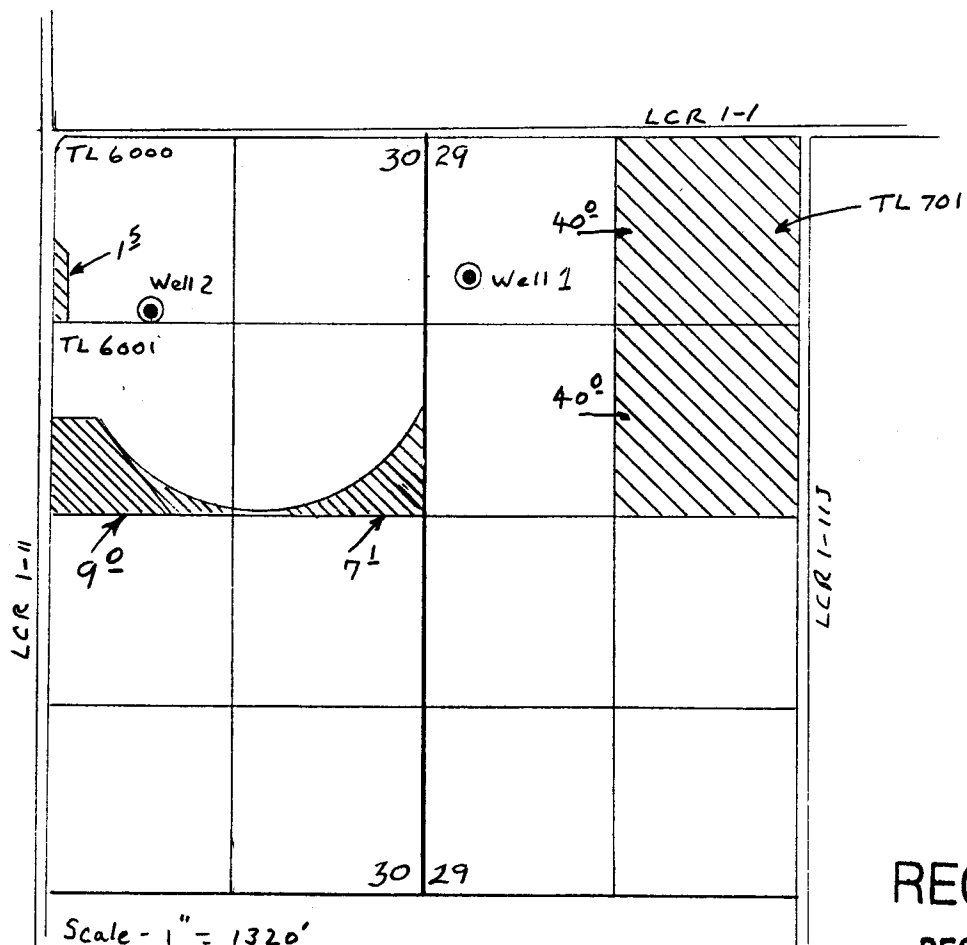
Application No.

T 40 S, R 19 E

Permit No. G-1527

WELL 1 - LOCATED NW¼ NW¼, SECTION 29, T 40 S, R 19 E, W.M.;  
990 FEET SOUTH and 300 FEET EAST from the NW CORNER, SECTION 29.

WELL 2 - LOCATED NW¼ NE¼, SECTION 30, T 40 S, R 19 E, W.M.;  
1230 FEET SOUTH and 1880 FEET WEST from the NE CORNER, SECTION 30.



RECEIVED

DEC 18 2001

WATER RESOURCES DEPT.  
SALEM, OREGON