

6-15673

Application No. Permit No. G-15218

DISTRICT/CITY JOINT DEVELOPMENT
ALAMEDA ELEMENTARY SCHOOL SITE
SCHOOL DISTRICT 8C
ONTARIO, OREGON

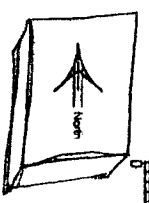
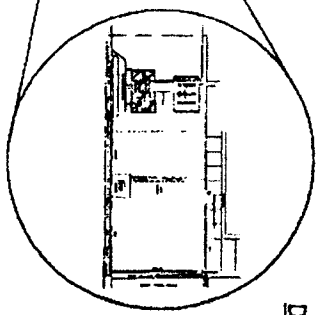
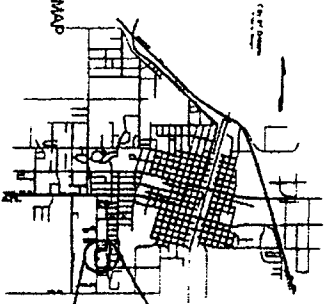
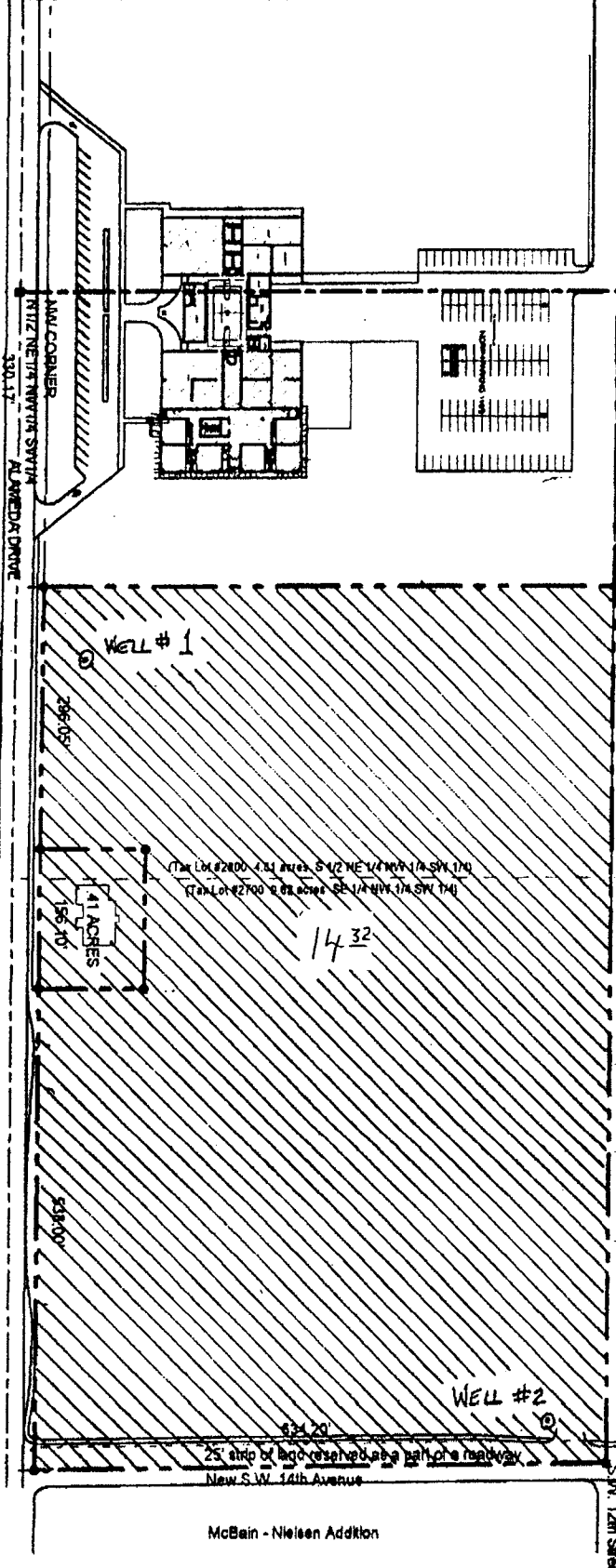
RECEIVED
DEC 24 2001
WATER RESOURCES DEPT
SALEM, OREGON

LEGAL DESCRIPTION

Land in Twp. 18 S., R. 47 E., W.M., Multnomah County, Oregon,
as follows:
Sec. 8, S1/2 NE1/4 NW1/4 SW 1/4 and SE 1/4 NW1/4 SW1/4,
EXCEPTING THEREFROM a strip of land 25 feet wide being
reserved and set apart as a part of a 50 foot roadway, and
rights of way for roads and ditches previously granted

WELL LOCATIONS:

#1 - 905' N. x 590' W. ;
#2 - 40' N. x 70' W., both
from the SE COR. NW1/4 SW 1/4
Section 9.



DEVELOPMENT SITE PLAN



EXHIBIT A